



giggles



capsules

by AGF

FREE PATTERN



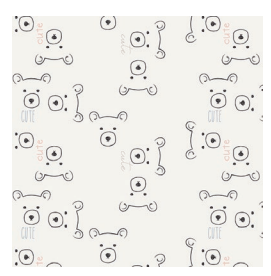


giggles

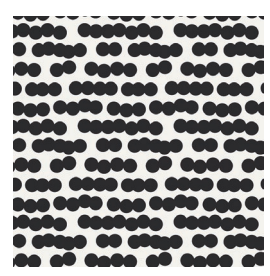
QUILT DESIGNED BY AGF STUDIO *AGFstudio*



FABRICS DESIGNED BY AGF STUDIO



CAP-N-6000
CARE BEARS



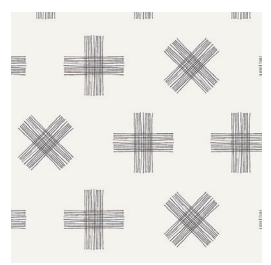
CAP-N-6001
PLAYING DOTS



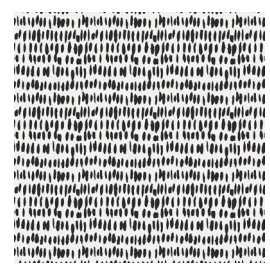
CAP-N-6002
DREAM BIG



CAP-N-6003
SWIRLY FRIENDS



CAP-N-6004
TWINKLE TWINKLE



CAP-N-6005
FINGER PAINT



CAP-N-6006
CURIOUS PAWS



CAP-N-6007
MAKE A WISH



CAP-N-6008
SIR BEAR



CAP-N-6009
ONE, TWO, SHEEP





FINISHED SIZE | 60' x 80'

FABRIC REQUIREMENTS

Fabric A	PE-471	3 5/8 yd.
Fabric B	PE-469	5/8 yd.
Fabric C	PE-470	5/8 yd.
Fabric D	CAP-N-6001	1 yd.
Fabric E	CAP-N-6002	5/8 yd.
Fabric F	CAP-N-6003	5/8 yd.
Fabric G	CAP-N-6004	5/8 yd.
Fabric H	CAP-N-6005	5/8 yd.
Fabric I	CAP-N-6006	5/8 yd.
Fabric J	CAP-N-6007	1 yd.
Fabric K	CAP-N-6008	2 yd.

BINDING FABRIC

CAP-N-6002 (Fabric **D**) *(included)*

BACKING FABRIC

CAP-N-6008 *(suggested)* 4 yd.

CUTTING DIRECTIONS

*1/4" seam allowances are included.
WOF means width of fabric.*

Thirty-five (35) Template Rhombus from fabric **A**

Three (3) Template Rhombus from fabric **B**

Two (2) Template Rhombus from fabrics **C, D, F, G, H, I**

Three (3) Template Rhombus from fabric **E**

Fabric **J**:

- Using the Rhombus Template cut the words:

There is no Idea Too wild There is no dream Too big

Make sure it is centered.

- Cut the Three bears each separately.

- Cut the Words **Three big bears**

- Cut the Words **Three Little Cats** each separately.

- Cut the Three little Cats each separately.

- Save the rest of the fabric for other projects.

XX

Fabric **K**:

- Using the Rhombus Template cut two bears making sure they are centered

- Cut one Template Rhombus using the white negative space of the fabric.

- Cut the right and left borders all the way to the end. Two (2) 5 1/2' x 72'

CONSTRUCTION

Sew all rights sides together with 1/4" seam allowance.

- Take the Three fabric **B** Rhombuses and the Three Bears from fabric **J**
- Using steam a seam paper appliqué each of the bear on top of the rhombuses (one bear for each rhombus)
- You can stitch the bears 1/8' away from the edge to secure it.
- Set aside.

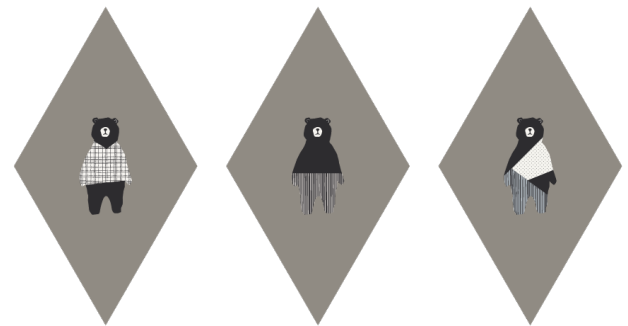


DIAGRAM 1

- Take the Two fabric **C** Rhombuses and the **Three Little Cats** words and the three cats heads from fabric **J**
- Using steam a seam paper appliqué on one of the rhombuses the cats heads and on the other one appliqué the Three words.
- Again you can stitch the appliqués 1/8' away from the edge to secure it.
- Set aside.



DIAGRAM 2

- Take the white rhombus from fabric **K** and the **Three big bears** words from fabric **J**
- Using steam a seam paper appliqué the words centered on the rhombus.
- Again you can stitch the appliqués $\frac{1}{8}$ ' away from the edge to secure it.
- Set aside.



DIAGRAM 3

ASSEMBLING THE TOP

- Start sewing the rhombuses together following the Diagram Below.

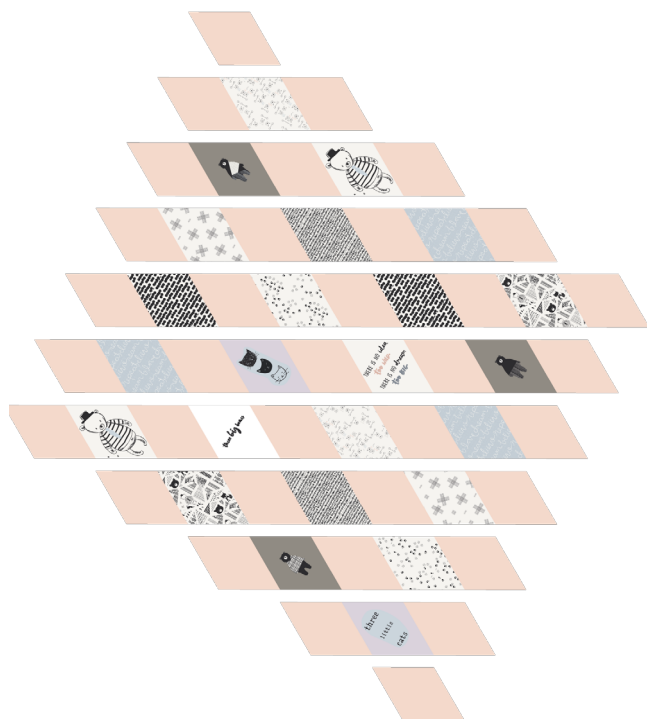


DIAGRAM 4

- Trim the edges to end up with a 60' x 70' Rectangle.

XXXXXXXXXXXXXXXXXXXXXXXXXXXXXXXXXXXX

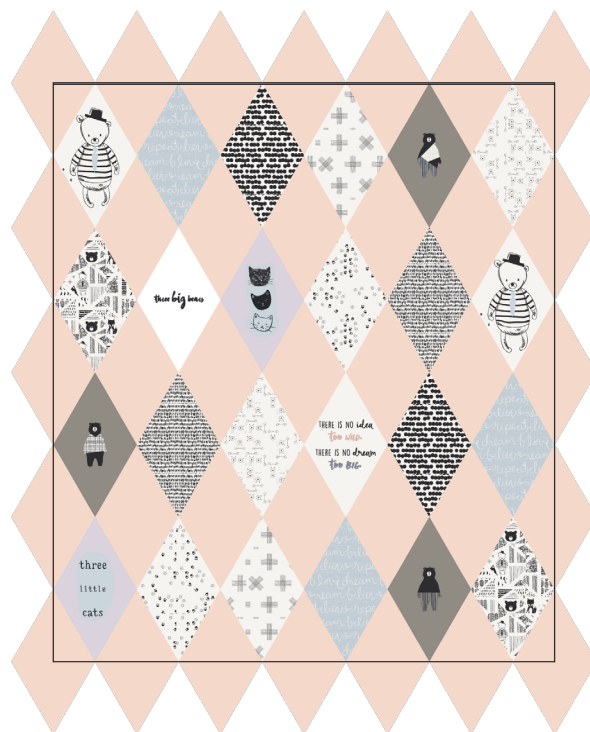


DIAGRAM 5

- Attach the $5\frac{1}{2}$ ' x 72' borders from fabric **K** on the top and bottom edges and trim the excess fabric.

QUILT ASSEMBLY

Sew rights sides together.

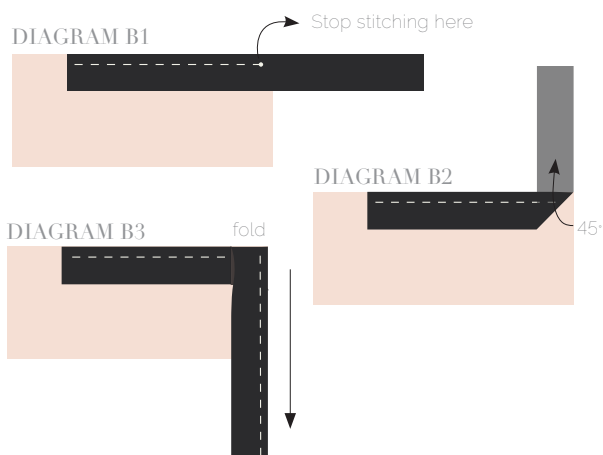
- Place BACKING FABRIC on a large surface wrong side up. Stretch it with masking tape against that surface.
- Place BATTING on top of backing fabric.
- Place TOP on top of the batting with right side facing up. Smooth away wrinkles using your hands.
- Pin all layers together and baste with basting thread, using long stitches. You can also use safety pins to join the layers.
- Machine or hand quilt starting at the center and working towards the corners. Remember that quilting motifs are a matter of personal preference. Have fun choosing yours!
- After you finished, trim excess of any fabric or batting, squaring the quilt to proceed to bind it.

BINDING

Sew rights sides together.

- Cut enough strips 1½' wide by the width of the fabric **D** to make a final strip 290' long. Start sewing the binding strip in the middle of one of the sides of the quilt, placing the strip right side down and leaving an approximated 5' tail. Sew with ¼' seam allowance (using straight stitch), aligning the strip's raw edge with the quilt top's raw edge.
- Stop stitching ¼' before the edge of the quilt (**DIAGRAM B 1**). Clip the threads. Remove the quilt from under the machine presser foot. Fold the strip in a motion of 45° and upward, pressing with your fingers (**DIAGRAM B2**). Hold this fold with your finger, bring the strip down in line with the next edge, making a horizontal fold that aligns with the top edge of the quilt (**DIAGRAM B3**). Start sewing at ¼' of the border, stitching all the layers. Do the same in the four corners of the quilt.

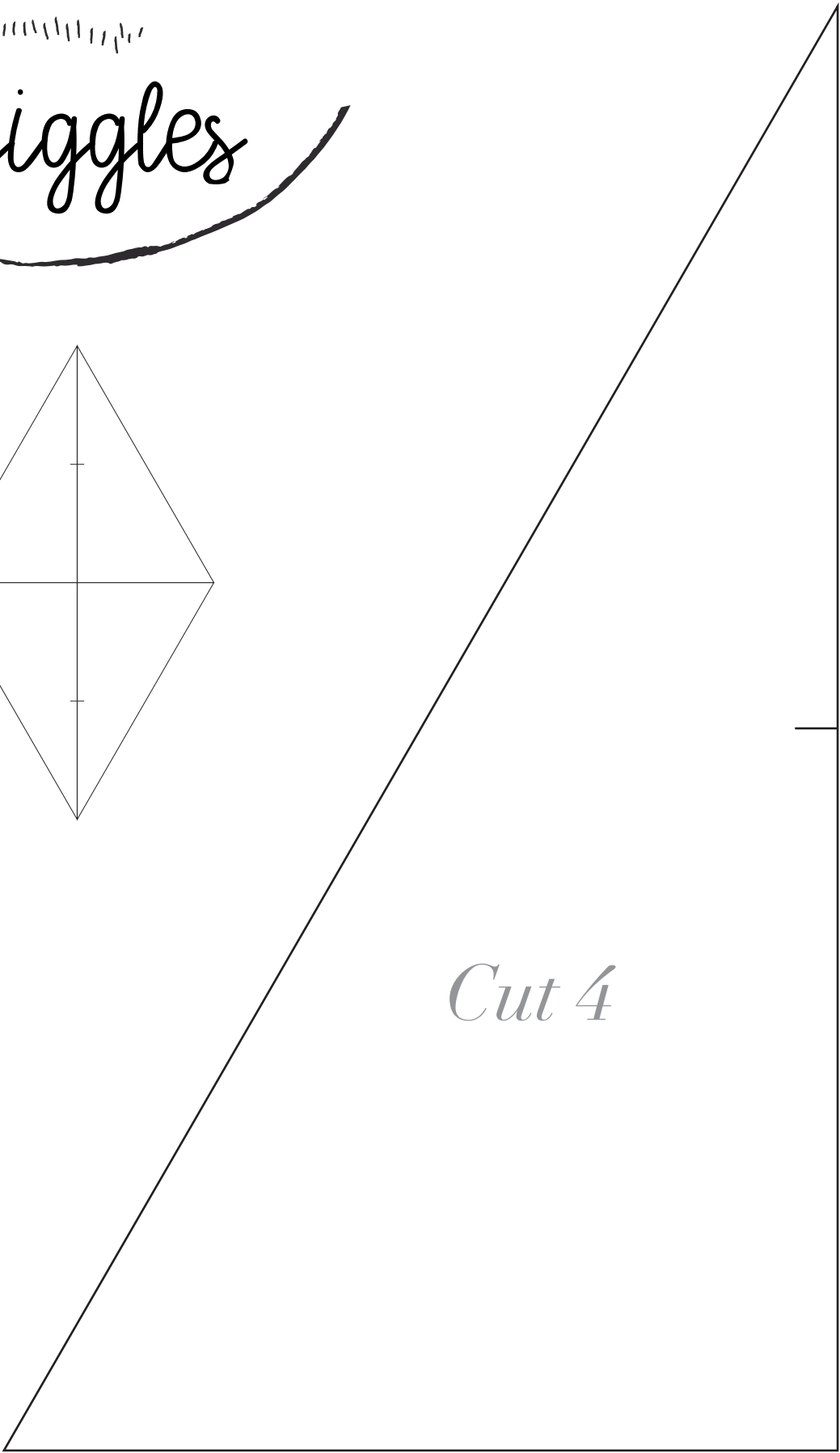
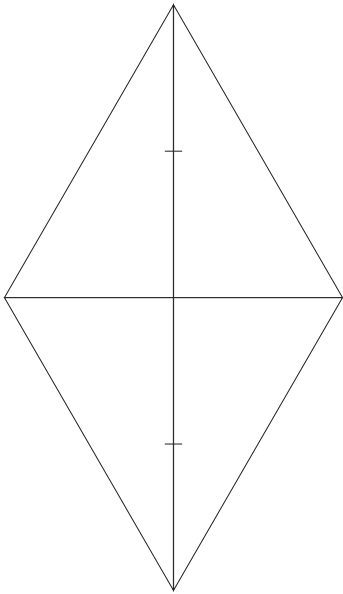
- Stop stitching before you reach the last 5 or 6 inches. Cut the threads and remove the quilt from under the machine presser foot. Lay the loose ends of the binding flat along the quilt edge, folding the ends back on themselves where they meet. Press them together to form a crease. Using this crease as the stitching line, sew the two open ends of the binding with right sides together (you can help yourself marking with a pencil if the crease is difficult to see).
- Trim seam to ¼' and press open. Complete the sewing. Turn binding to back of the quilt, turn raw edge inside and stitch by hand using blind stitch.



artgalleryfabrics.com

NOTE: While all possible care has been taken to ensure the accuracy of this pattern, We are not responsible for printing errors or the way in which individual work varies. Please read instructions carefully before starting the construction of this quilt. If desired, wash and iron your fabrics before starting to cut.

giggles



Cut 4