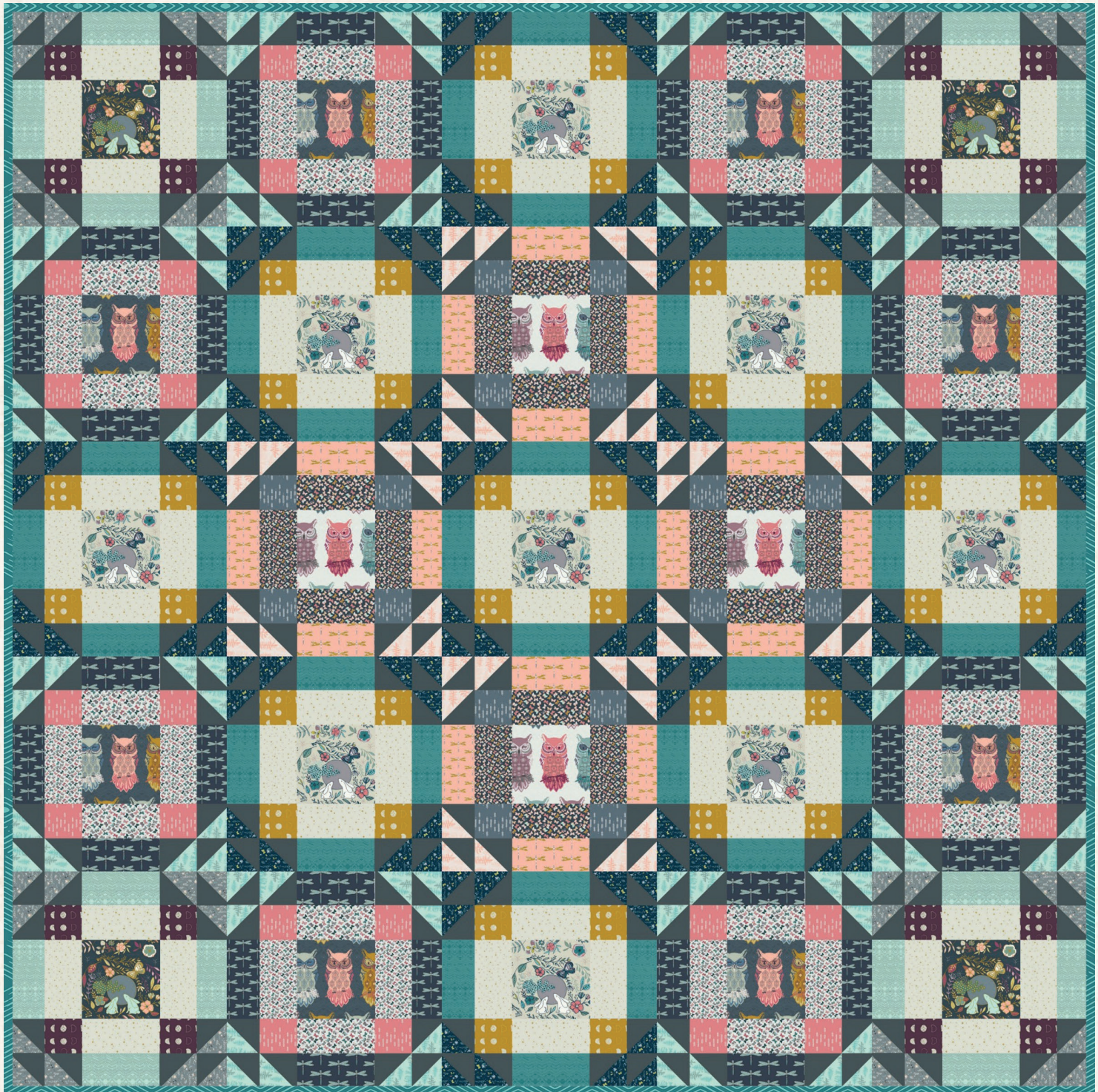


Foxfire

X
X
X
X
X
X
X
X
X
X
X
X
X
X
X



FREE PATTERN

X X X X X X X X X X X X X X X X X X X X X X X X



XXXXXXX
Foxfire Maureen
 Cracknell

QUILT DESIGNED BY MAUREEN CRACKNELL

Nightfall



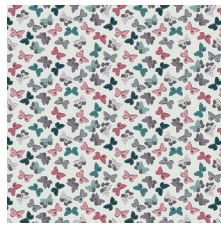
COLOR OPTION

FABRICS DESIGNED BY MAUREEN CRACKNELL

MOONSET



NTF-67900
LUNATION DARK



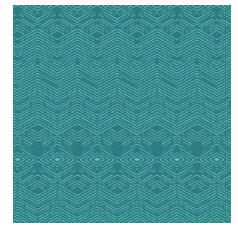
NTF-67901
MOTHLIKE SHADOWS PURE



NTF-67902
MYSTICAL WOODS LUNAR



NTF-67903
MOON STORIES ASH



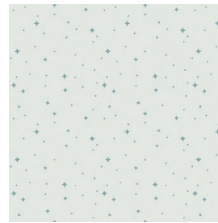
NTF-67904
LABYRINTHINE DUSK



NTF-67905
NOX IRIDESCENCE DIM



NTF-67906
AURA FLETCINGS ROSE



NTF-67907
LUMINARIES SILVER



NTF-67908
MAGICAL GUST CRIP

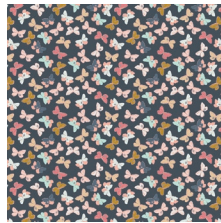


NTF-67909
BIRD OF NIGHT MIST

MOONRISE



NTF-77900
LUNATION BRIGHT



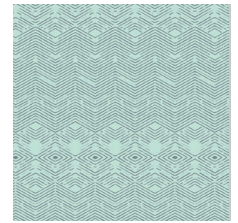
NTF-77901
MOTHLIKE SHADOWS DEP



NTF-77902
MYSTICAL WOODS SOLAR



NTF-77903
MOON STORIES SPARK



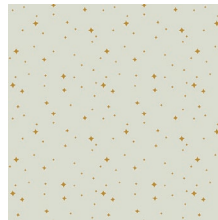
NTF-77904
LABYRINTHINE DAWN



NTF-77905
NOX IRIDESCENCE AGLOW



NTF-77906
AURA FLETCINGS BLUE



NTF-77907
LUMINARIES GOLD



NTF-77908
MAGICAL GUST FOG



NTF-77909
BIRD OF NIGHT SLATE



FEEL THE DIFFERENCE © 2016 Courtesy of Art Gallery Quilts LLC. All Rights Reserved.



FINISHED SIZE | 60" x 60"

FABRIC REQUIREMENTS

Fabric A	NTF-67900	1 F8.
Fabric B	NTF-67901	1 FQ.
Fabric C	NTF-67902	1/2yd.
Fabric D	NTF-67903	3/4 yd.
Fabric E	NTF-67904	1 yd.
Fabric F	NTF-67905	1 FQ.
Fabric G	NTF-67906	1 FQ.
Fabric H	NTF-67907	1 F8.
Fabric I	NTF-67908	5/8 yd.
Fabric J	NTF-67909	1 F8.
Fabric K	NTF-77900	1 FQ.
Fabric L	NTF-77901	1 F8.
Fabric M	NTF-77902	1 FQ.
Fabric N	NTF-77903	1 F8.
Fabric O	NTF-77904	1 F8.
Fabric P	NTF-77905	1 F8.
Fabric Q	NTF-77906	1 F8.
Fabric R	NTF-77907	1/3 yd.
Fabric S	NTF-77908	1 FQ.
Fabric T	NTF-77909	3/4 yd.
Fabric U	PE-452	1 1/3 yd.

BACKING FABRIC

NTF-77909 3 3/4 yds. *(Suggested)*

BINDING FABRIC

NTF-67904 (Fabric **E**) *(included)*

CUTTING DIRECTIONS

*1/4" seam allowances are included.
WOF means width of fabric.*

Sixteen (16) 2 1/2" squares from fabric **A**

Thirty-two (32) 2 1/2" x 4 1/2" rectangles from fabric **B**

Two (2) 6 1/2" WOF strips from fabric **C**
Sub-cut into eight 6 1/2" x 9 1/2" rectangles per strip

Nine (9) 4 1/2" squares from fabric **D**

Four (4) 2 1/2" WOF strips from fabric **E**
Sub-cut into thirty-six 2 1/2" x 4 1/2" rectangles per strip

XXXXXXXXXXXXXXXXXXXXXXXXXXXXXXXX

Thirty-two (32) 2 1/2" x 4 1/2" rectangles from fabric **F**

Thirty-two (32) 2 1/2" squares from fabric **G**

Sixteen (16) 2 1/2" x 4 1/2" rectangles from fabric **H**

Three (3) 6 1/2" WOF strips from fabric **I**
Sub-cut into nine 6 1/2" x 9 1/2" rectangles

Four (4) 4 1/2" squares from fabric **J**

Thirty-six (36) 2 1/2" squares from fabric **K**

Sixteen (16) 2 1/2" x 4 1/2" rectangles from fabric **L**

Four (4) 6 1/2" x 9 1/2" rectangles from fabric **M**

Four (4) 4 1/2" squares from fabric **N**

Sixteen (16) 2 1/2" x 4 1/2" rectangles from fabric **O**

Sixteen (16) 2 1/2" x 4 1/2" rectangles from fabric **P**

Sixteen (16) 2 1/2" squares from fabric **Q**

Four (4) 2 1/2" WOF strips from fabric **R**
Sub-cut into thirty-six 2 1/2" x 4 1/2" rectangles

Four (4) 6 1/2" x 9 1/2" rectangles from fabric **S**

Eight (8) 4 1/2" squares from fabric **T**

Seven (7) 6 1/2" WOF strips from fabric **U**
Sub-cut into twenty-five 6 1/2" x 9 1/2" rectangles

CONSTRUCTION

Sew all rights sides together with 1/4" seam allowance.

- Cut all the fabrics as set out in the fabric requirements table.
- Foundation paper piece the half square triangles (HSTs) as set out in steps 3 to 7 and using the 6 1/2" x 9 1/2" print rectangles paired with the 6 1/2" x 9 1/2" solid 6 1/2" x 9 1/2" rectangles and the HST templates.
- Pin one of these pairs to the back of one of the HST templates making sure that the fabric covers the whole of the printed part of the template and overhangs it by at least 1/4" all round. The lighter fabric should be next to the back of the template.
- Flip the template over, shorten your stitch length to 1.5 and sew along the green lines on the template. NB: return stitch length to normal once all twenty-five templates are sewn

- Trim away excess paper and fabric and cut the template and fabric into triangles by rotary cutting along the blue lines. Each template will yield twelve HSTs.
- Trim along the red lines using a rotary cutter or scissors.
- Press the HSTs open. NB: these HSTs should measure 2 ½" square and no further trimming is required – if they do not measure 2 ½" square, re-check the size of the HST template.
- Tear away the paper from the back of the HSTs.
- You will now make twenty-five blocks from the pieces cut at step 1 and the HSTs made at steps 3 to 8.

ASSEMBLING THE TOP

Sew all rights sides together with ¼" seam allowance. Press open.

- Follow the layout in the main quilt image and the diagrams below for fabric placement:

A1	A2	A3	A4	A5
B1	B2	B3	B4	B5
C1	C2	C3	C4	C5
D1	D2	D3	D4	D5
E1	E2	E3	E4	E5

- A1, A5, E1 and E5:



DIAGRAM 1

- A2, A4, B1, B5, D1, D5, E2 and E4:



DIAGRAM 2

- XXXXXXXXXXXXXXXXXXXXXXXXXXXX
- A3, B2, B4, C1, C3, C5, D2, D4 and E3:



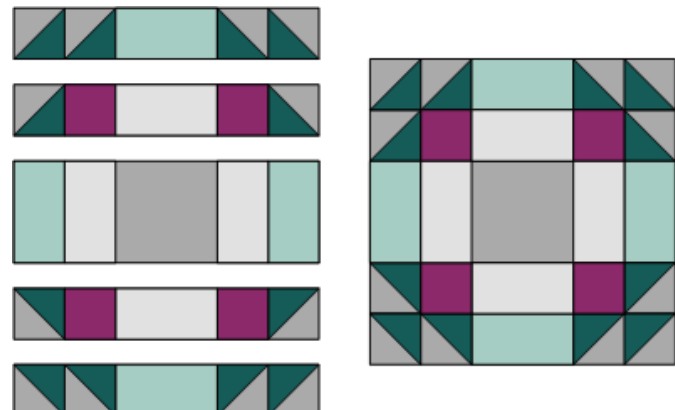
DIAGRAM 3

- B3, C2, C4 and D3



DIAGRAM 4

- Sew each block into five rows as shown in the diagram below and as follows:
- Rows 1 and 5 – four HSTs and one 2 ½" x 4 ½" rectangle;
- Rows 2 and 4 – two HSTs, two 2 ½" squares and one 2 ½" x 4 ½" rectangle; and
- Row 3 – four 2 ½" x 4 ½" rectangles and one 4 ½" square.



- Press seams in alternate directions in each row within each block.
- Sew the five rows of each block together. Press all the seams in one direction.
- Sew the blocks into five rows of five and press the seams joining those blocks in alternate directions in each row.

QUILT ASSEMBLY

Sew rights sides together.

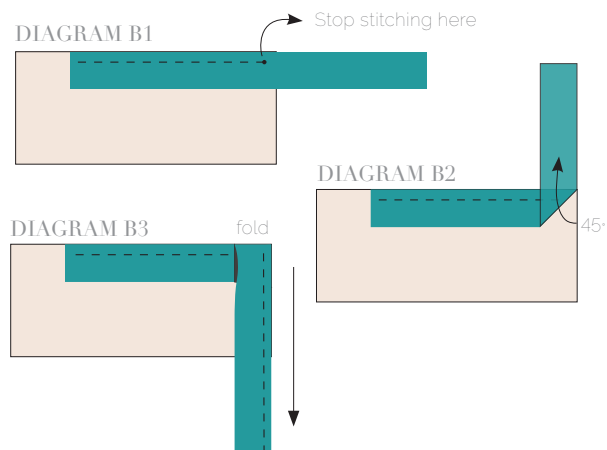
- Place BACKING FABRIC on a large surface wrong side up. Stretch it with masking tape against that surface.
- Place BATTING on top of backing fabric.
- Place TOP on top of the batting with right side facing up. Smooth away wrinkles using your hands.
- Pin all layers together and baste with basting thread, using long stitches. You can also use safety pins to join the layers.
- Machine or hand quilt starting at the center and working towards the corners. Remember that quilting motifs are a matter of personal preference. Have fun choosing yours!
- After you finished, trim excess of any fabric or batting, squaring the quilt to proceed to bind it.

BINDING

Sew rights sides together.

- Cut enough strips $1\frac{1}{2}$ ' wide by the width of the fabric **E** to make a final strip 250' long. Start sewing the binding strip in the middle of one of the sides of the quilt, placing the strip right side down and leaving an approximated 5' tail. Sew with $\frac{1}{4}$ ' seam allowance (using straight stitch), aligning the strip's raw edge with the quilt top's raw edge.
- Stop stitching $\frac{1}{4}$ ' before the edge of the quilt (**DIAGRAM B 1**). Clip the threads. Remove the quilt from under the machine presser foot. Fold the strip in a motion of 45° and upward, pressing with your fingers (**DIAGRAM B 2**). Hold this fold with your finger, bring the strip down in line with the next edge, making a horizontal fold that aligns with the top edge of the quilt (**DIAGRAM B 3**). Start sewing at $\frac{1}{4}$ ' of the border, stitching all the layers. Do the same in the four corners of the quilt.

- Stop stitching before you reach the last 5 or 6 inches. Cut the threads and remove the quilt from under the machine presser foot. Lay the loose ends of the binding flat along the quilt edge, folding the ends back on themselves where they meet. Press them together to form a crease. Using this crease as the stitching line, sew the two open ends of the binding with right sides together (you can help yourself marking with a pencil if the crease is difficult to see).
- Trim seam to $\frac{1}{4}$ ' and press open. Complete the sewing. Turn binding to back of the quilt, turn raw edge inside and stitch by hand using blind stitch.



artgalleryfabrics.com

NOTE: While all possible care has been taken to ensure the accuracy of this pattern, We are not responsible for printing errors or the way in which individual work varies. Please read instructions carefully before starting the construction of this quilt. If desired, wash and iron your fabrics before starting to cut.



5 3/4 in

