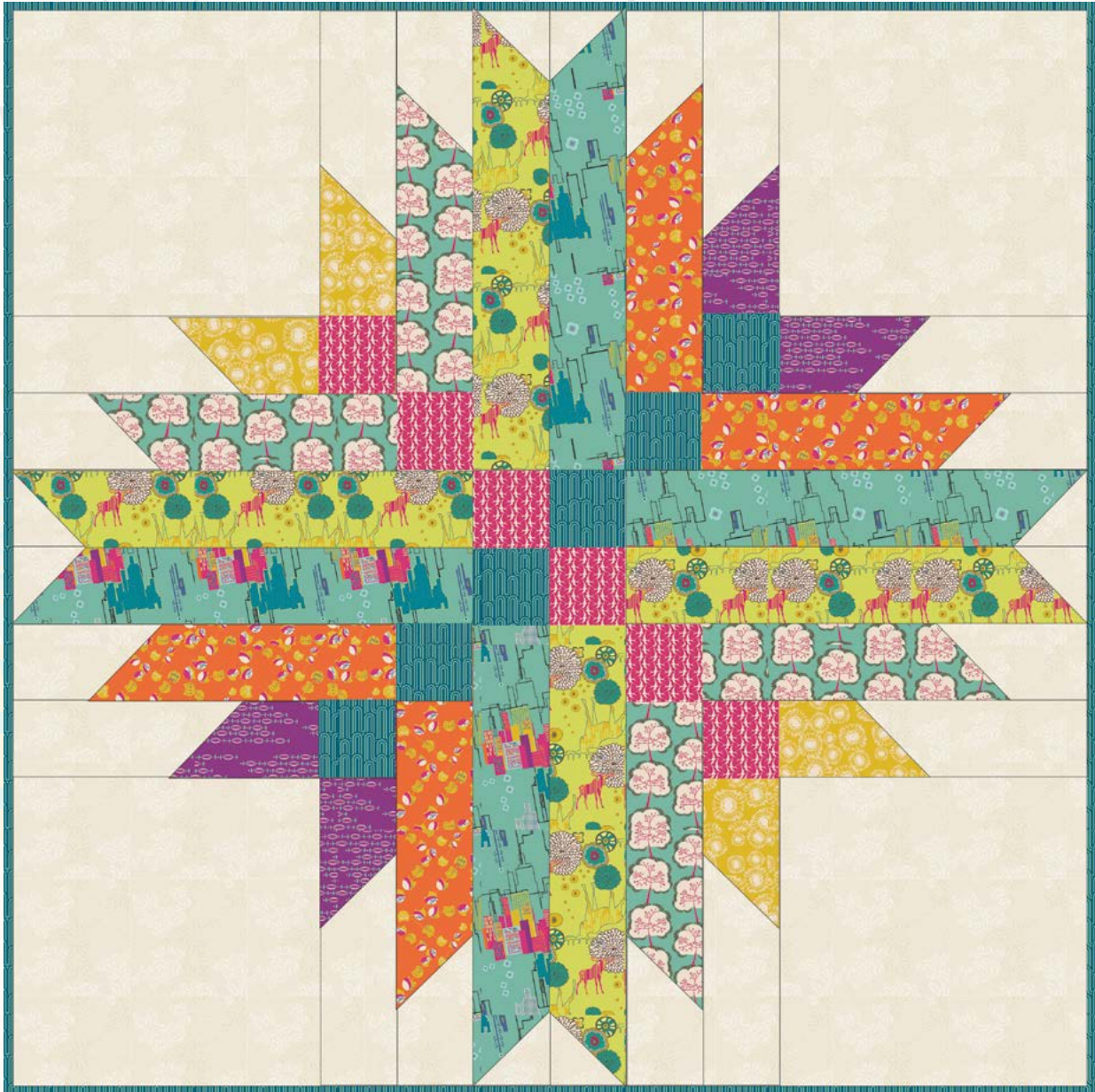


ASTROBELIC

{ FEATURING UTOPIA COLLECTION }



FREE PROJECT SHEET

DESIGNED BY : **FRANCES
NEWCOMBE**

QUILT DESIGNED BY FRANCES NEWCOMBE

ASTRODELIC

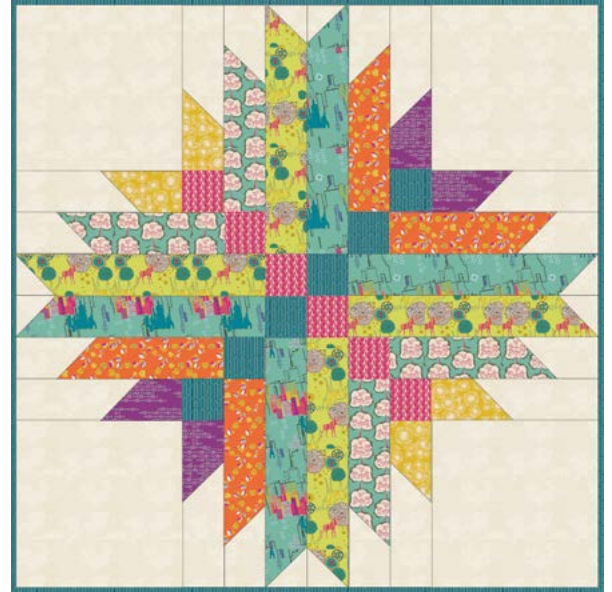
FINISHED SIZE: 42" X 42"

To download the instructions for this pattern visit

artgalleryfabrics.com

KIT QUANTITY

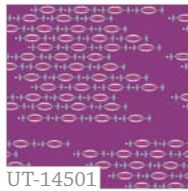
UT-24502	1/8 yd.
UT-24509	1/4 yd.
UT-24507	1/4 yd.
UT-24204	1/8 yd.
UT-14501	1/8 yd.
UT-14505	1/4 yd.
UT-14503	1/4 yd.
UT-24506	3/8 yd.
NE-104	1 yd.
Backing	1 1/2 yd.



FANTASY CITY FERVOR



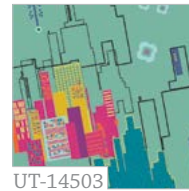
UT-14500
Dreamlandia
Illuminated



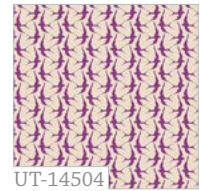
UT-14501
Atomic Influx Perse



UT-14502
Specks of Rambutan



UT-14503
Megalopolitan Dim



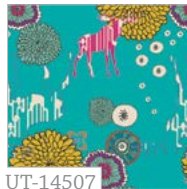
UT-14504
Orni Bioluminescence



UT-14505
Chatter Pods Citrica



UT-14506
Lucid Hills Amber



UT-14507
Paradise Dwellers Vivid



UT-14508
Urban Sprawl Magenta

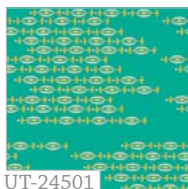


UT-14509
Aglow Sapling Mango

REVERIE CITY WINTER



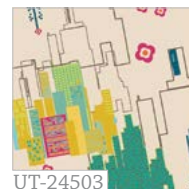
UT-24500
Dreamlandia
Irradiated



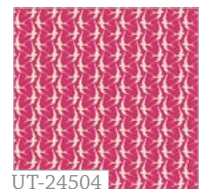
UT-24501
Atomic Influx Alloy



UT-24502
Specks of Carambola



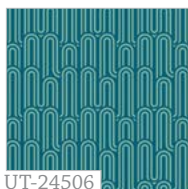
UT-24503
Megalopolitan Glim



UT-24504
Orni Incandescence



UT-24505
Chatter Pods Menta



UT-24506
Lucid Hills Jade



UT-24507
Paradise Dwellers
Neon



UT-24508
Urban Sprawl Grass



UT-24509
Aglow Sapling Sloe





QUILT DESIGNED BY Karen Turchan

ASTRODELIC

FINISHED SIZE: 42" X 42"

To download the instructions
for this pattern visit

artgalleryfabrics.com

FABRIC REQUIREMENTS

Fabric A	UT-24502	1/8 yd.
Fabric B	UT-24509	1/4 yd.
Fabric C	UT-24507	1/4 yd.
Fabric D	UT-24504	1/8 yd.
Fabric E	UT-14501	1/8 yd.
Fabric F	UT-14505	1/4 yd.
Fabric G	UT-14503	1/4 yd.
Fabric H	UT-24506	3/8 yd.
Fabric I	NE-104	1 yd.

Backing Fabric

UT-24502 1 1/2 yds. (suggested)

Binding Fabric

UT-24506 (Fabric **H**) (included)

CUTTING DIRECTIONS

1/4" seam allowances are included. WOF means width of fabric.

One (1) 3 1/2" x WOF strip from fabric **A** Sub cut strip into four (4) 3 1/2" x 6 1/2" strips

Two (2) 3 1/2" x WOF strips from fabric **B** Sub cut strip into four (4) 3 1/2" x 12 1/2" strips

Two (2) 3 1/2" x WOF strips from fabric **C** Sub cut strip into four (4) 3 1/2" x 18 1/2" strips

One (1) 3 1/2" x WOF strip from fabric **D** Sub cut strip into six (6) 3 1/2" squares

One (1) 3 1/2" x WOF strip from fabric **E** Sub cut strip into four (4) 3 1/2" x 6 1/2" strips

Two (2) 3 1/2" x WOF strips from fabric **F** Sub cut strip into four (4) 3 1/2" x 12 1/2" pieces (F6)

Two (2) 3 1/2" x WOF strips from fabric **G** Sub cut strip into four (4) 3 1/2" x 18 1/2" strips

One (1) 3 1/2" x WOF strips from fabric **H** Sub cut strip into six (6) 3 1/2" squares

Four (4) 12 1/2" squares from fabric **I**

Eight (8) 3 1/2" x 9 1/2" strip from fabric **I**

Eight (8) 3 1/2" x 6 1/2" strip from fabric **I**

Eight (8) 3 1/2" squares from fabric **I**

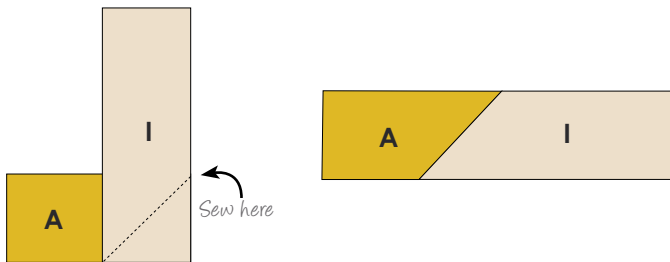


BLOCK ASSEMBLY

Sew all rights sides together with 1/4" seam allowance.

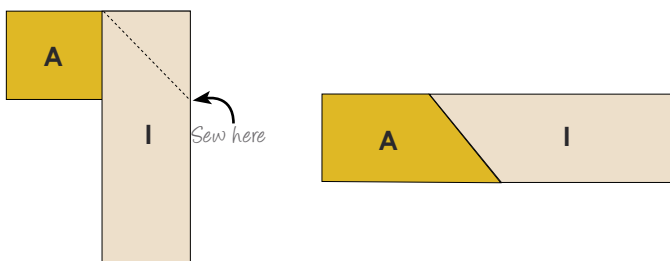
- There are two block combinations for the construction of this quilt
- Follow the instructions below for the constructions of block **a**
- Start the construction of block **a** by taking one 3 1/2" x 9 1/2" strip from fabric **I** and one 3 1/2" X 6 1/2" strip from fabric **A**
- Lay strip **I** on the right side of strip **A** making a right angle, with strip **I** extending up.
- Draw a line using an erasable fabric marker from the upper right corner to the lower left intersection.
- Sew along the line (DIAGRAM 1)
- Trim away the excess fabric leaving 1/4" seam allowance.
- Press open

(DIAGRAM 1)



- Take one 3 1/2" x 9 1/2" strip from fabric **I** and one 3 1/2" X 6 1/2" strip from fabric **A**
- Lay strip **I** on the right side of strip **A** making a right angle, with strip **I** extending down.
- Draw a line using an erasable fabric marker from the upper left corner to the lower right intersection.
- Sew along the line (DIAGRAM 2)
- Trim away the excess fabric leaving 1/4" seam allowance.
- Press open

(DIAGRAM 2)



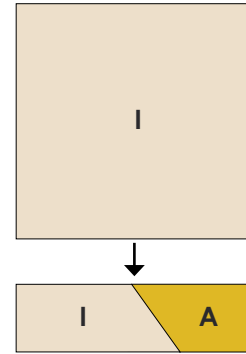
- Take one 3 1/2" square from fabric **D** and attach it to the bottom of piece **IA** from DIAGRAM 1
- Press towards fabric **D**

(DIAGRAM 3)



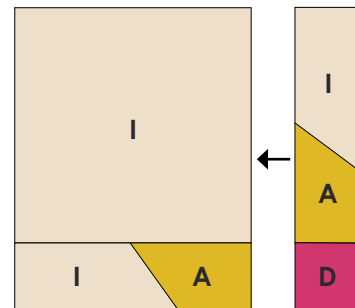
- Take the piece **IA** that is left and one 12 1/2" square from fabric **I**
- Sew the square from fabric **I** to the top of the strip **IA**

(DIAGRAM 4)



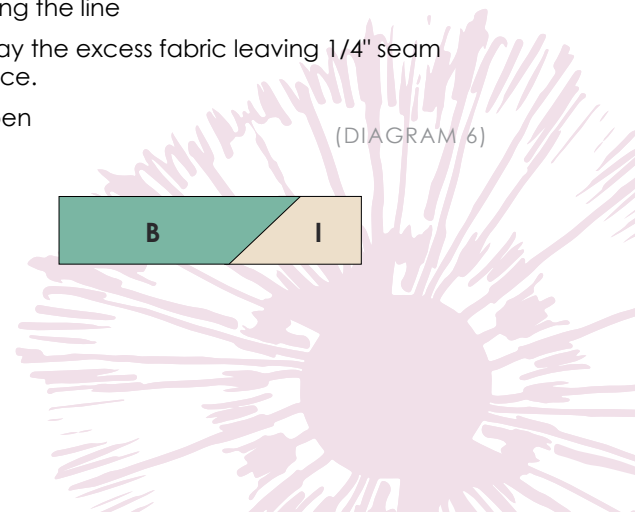
- Take the **IAD** strip and attach it to the right side of the piece previously sewn

(DIAGRAM 5)



- Take one 3 1/2" x 6 1/2" strip from fabric **I** and one 3 1/2" x 12 1/2" from fabric **B**
- Using the same process shown in DIAGRAM 1 sew the strip from fabric **I** to the right side of the strip from fabric **B**
- Draw a line using an erasable fabric marker from the upper right corner to the lower left intersection.
- Sew along the line
- Trim away the excess fabric leaving 1/4" seam allowance.
- Press open

(DIAGRAM 6)





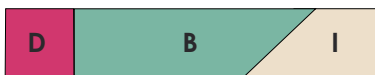
- Take one 3 1/2" x 6 1/2" strip from fabric **I** and one 3 1/2" x 12 1/2" from fabric **B**
- This time use the same process shown in **DIAGRAM 2** sew the strip from fabric **I** to the right side of the strip from fabric **B**
- Draw a line using an erasable fabric marker from the upper left corner to the lower right intersection.
- Sew along the line
- Trim away the excess fabric leaving 1/4" seam allowance.
- Press open

(DIAGRAM 7)



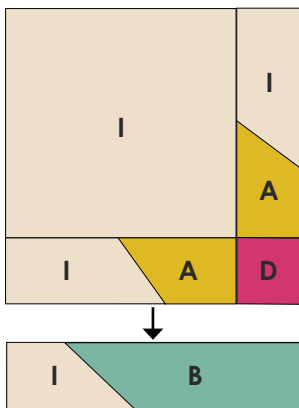
- Take one 3 1/2" square from fabric **D** and attach it to the bottom of piece **IB** from **DIAGRAM 6**
- Press towards fabric **D**
- Pay close attention to the fabric orientation

(DIAGRAM 8)



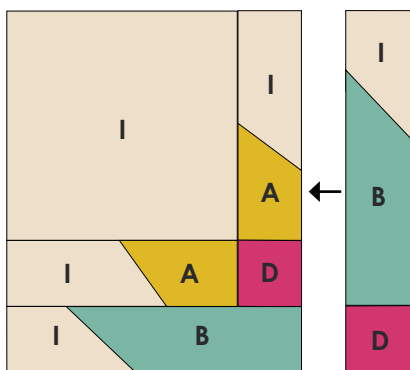
- Take the piece **IB** that is left and Sew it to the bottom of the square made in **DIAGRAM 5**

(DIAGRAM 9)



- Take the **IBD** strip and attach it to the right side of the piece previously sewn

(DIAGRAM 10)



- Take one 3 1/2" square from fabric **I** and one 3 1/2" x 18 1/2" from fabric **C**
- Repeat the same procedure done for **DIAGRAM 1 & 6**

(DIAGRAM 11)



- Take one 3 1/2" square from fabric **I** and one 3 1/2" x 18 1/2" from fabric **C**
- Repeat the same procedure done for **DIAGRAM 2 & 7**

(DIAGRAM 12)



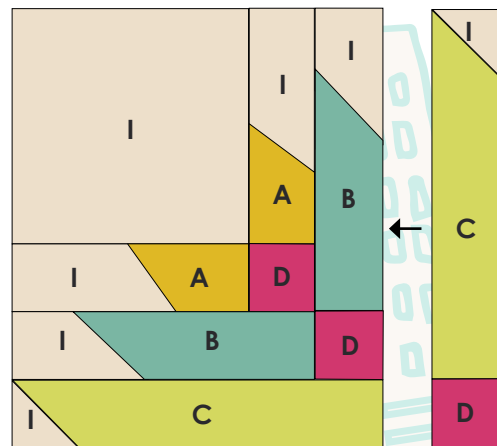
- Take one 3 1/2" square from fabric **D** and attach it to the bottom of piece **IC** from **DIAGRAM 11**
- Press towards fabric **D**
- Pay close attention to the fabric orientation

(DIAGRAM 12)

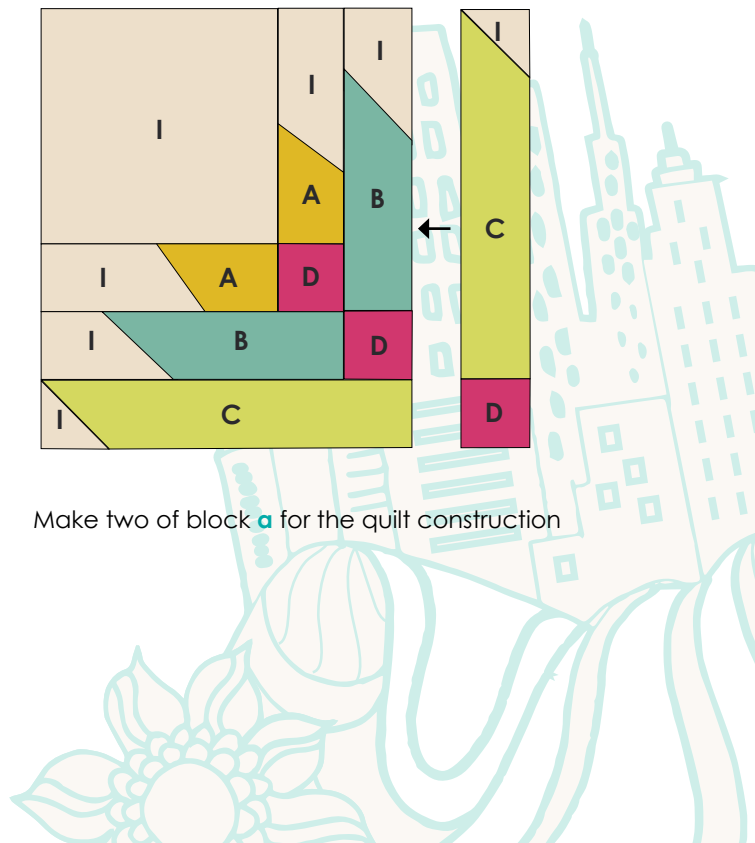


- Take the piece **IC** that is left and Sew it to the bottom of the square made in **DIAGRAM 10**
- Then take the **ICD** strip and attach it to the right side of the piece previously sewn

(DIAGRAM 13)

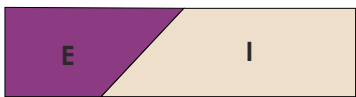


- Make two of block **a** for the quilt construction



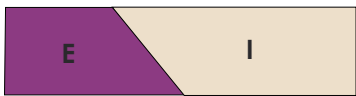
- the construction of block **b** is pretty much the same as block **a** but backwards, the strip construction remains the same
- Follow the instructions below for the block **b** construction
- Take one 3 1/2" x 9 1/2" strip from fabric **I** and one 3 1/2" x 6 1/2" strip from fabric **E**
- Lay strip **I** on the right side of strip **E** making a right angle, with strip **I** extending up.
- Draw a line using an erasable fabric marker from the upper right corner to the lower left intersection.
- Sew along the line
- Trim away the excess fabric leaving 1/4" seam allowance.
- Press open

(DIAGRAM 14)



- Take one 3 1/2" x 9 1/2" strip from fabric **I** and one 3 1/2" x 6 1/2" strip from fabric **E**
- Lay strip **I** on the right side of strip **E** making a right angle, with strip **I** extending down.
- Draw a line using an erasable fabric marker from the upper left corner to the lower right intersection.
- Sew along the line
- Trim away the excess fabric leaving 1/4" seam allowance.
- Press open

(DIAGRAM 15)



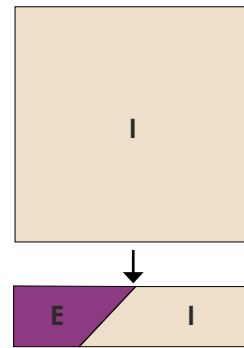
- Take one 3 1/2" square from fabric **H** and attach it to the bottom of piece **IE** from **DIAGRAM 15**
- Pay close attention to the fabric orientation
- Press towards fabric **H**

(DIAGRAM 16)



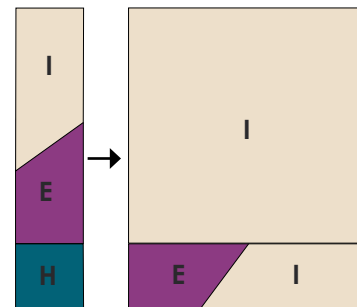
- Take the piece **IE** that is left and one 12 1/2" square from fabric **I**
- Sew the square from fabric **I** to the top of the strip **IE**

(DIAGRAM 17)



- Take the **IAD** strip and attach it to the left side of the piece previously sewn

(DIAGRAM 18)



- Take one 3 1/2" x 6 1/2" strip from fabric **I** and one 3 1/2" x 12 1/2" from fabric **F**
- Using the same process shown in **DIAGRAM 14** sew the strip from fabric **I** to the right side of the strip from fabric **F**

(DIAGRAM 19)



- Take one 3 1/2" x 6 1/2" strip from fabric **I** and one 3 1/2" x 12 1/2" from fabric **F**
- This time use the same process shown in **DIAGRAM 15** sew the strip from fabric **I** to the right side of the strip from fabric **F**

(DIAGRAM 20)



- Take one 3 1/2" square from fabric **H** and attach it to the bottom of piece **IF** from **DIAGRAM 20**
- Pay close attention to the fabric orientation
- Press towards fabric **H**

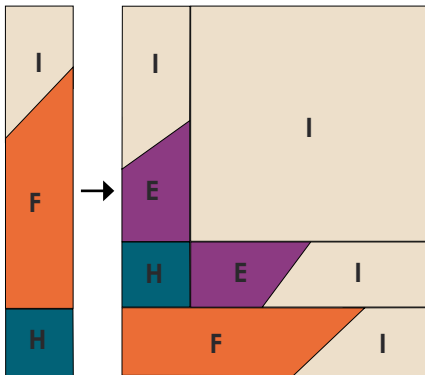
(DIAGRAM 21)





- Take the piece **IF** that is left and Sew it to the bottom of the square made in **DIAGRAM 18**
- Then take the **IFH** strip and attach it to the left side of the piece previously sewn

(DIAGRAM 22)



- Take one 3 1/2" square from fabric **I** and one 3 1/2" x 18 1/2" from fabric **G**
- Repeat the same procedure done for **DIAGRAM 14**

(DIAGRAM 23)



- Take one 3 1/2" square from fabric **I** and one 3 1/2" x 18 1/2" from fabric **G**
- Repeat the same procedure done for **DIAGRAM 15**

(DIAGRAM 24)



- Take one 3 1/2" square from fabric **H** and attach it to the bottom of piece **IG** from **DIAGRAM 24**
- Press towards fabric **H**
- Pay close attention to the fabric orientation

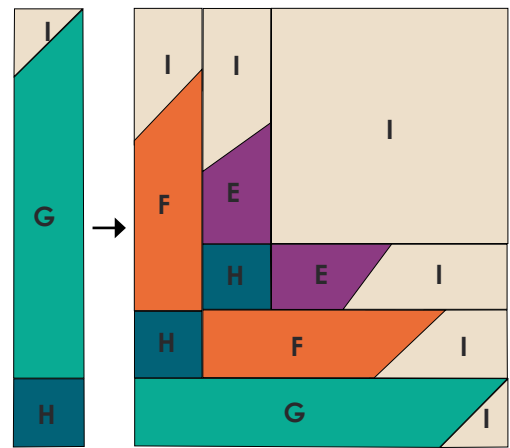
(DIAGRAM 25)



- Take the piece **IG** that is left and Sew it to the bottom of the square made in **DIAGRAM 22**
- Then take the **IGH** strip and attach it to the left side of the piece previously sewn



(DIAGRAM 25)

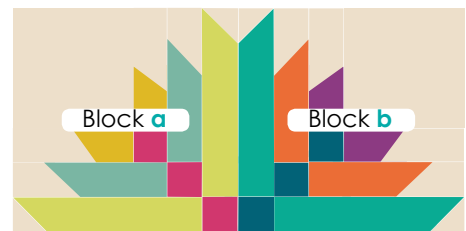


- Make two of block **b** for the quilt construction

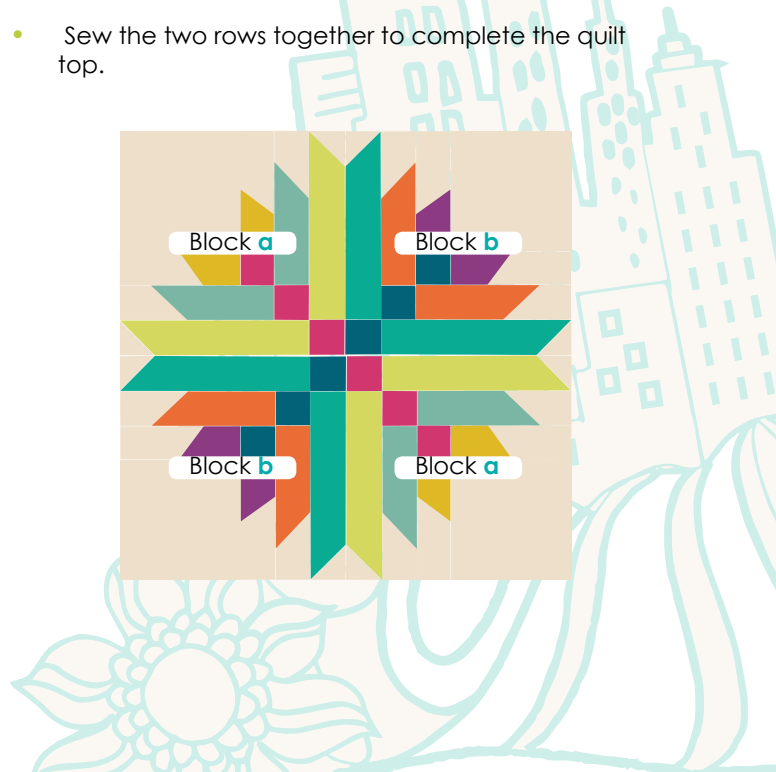
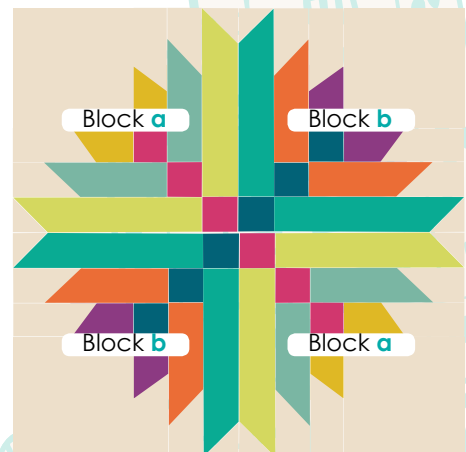
ASSEMBLING THE TOP

Sew all rights sides together with 1/4" seam allowance. Press open.

- Follow the cover picture for block placement
- Sew a Block **a** to a Block **a**
- Make two of this rows.
- Press toward Block **b**.



- Sew the two rows together to complete the quilt top.



QUILT ASSEMBLY

Sew right sides together.

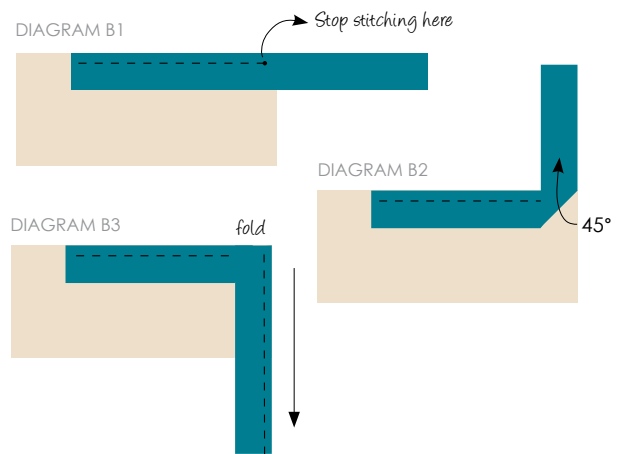
- Place BACKING FABRIC on a large surface wrong side up. Stretch it with masking tape against that surface.
- Place BATTING on top of backing fabric.
- Place TOP on top of the batting with right side facing up. Smooth away wrinkles using your hands.
- Pin all layers together and baste with basting thread, using long stitches. You can also use safety pins to join the layers.
- Machine or hand quilt starting at the center and working towards the corners. Remember that quilting motifs are a matter of personal preference. Have fun choosing yours!
- After you finish, trim excess of any fabric or batting, squaring the quilt to proceed to bind it.

BINDING

Sew right sides together.

- Cut enough strips $1\frac{1}{2}$ " wide by the width of the fabric to make a final strip 190" long. Start sewing the binding strip in the middle of one of the sides of the quilt, placing the strip right side down and leaving an approximate 5" tail. Sew with $\frac{1}{4}$ " seam allowance (using straight stitch), aligning the strip's raw edge with the quilt top's raw edge.
- Stop stitching $\frac{1}{4}$ " before the edge of the quilt (DIAGRAM B 1). Clip the threads. Remove the quilt from under the machine presser foot. Fold the strip in a motion of 45° and upward, pressing with your fingers (DIAGRAM B2). Hold this fold with your finger, bring the strip down in line with the next edge, making a horizontal fold that aligns with the top edge of the quilt (DIAGRAM B3). Start sewing at $\frac{1}{4}$ " of the border, stitching all the layers. Do the same in the four corners of the quilt.

- Stop stitching before you reach the last 5 or 6 inches. Cut the threads and remove the quilt from under the machine presser foot. Lay the loose ends of the binding flat along the quilt edge, folding the ends back on themselves where they meet. Press them together to form a crease. Using this crease as the stitching line, sew the two open ends of the binding with right sides together (you can help yourself by marking with a pencil if the crease is difficult to see).
- Trim seam to $\frac{1}{4}$ " and press open. Complete the sewing. Turn binding to back of the quilt, turn raw edge inside and stitch by hand using blind stitch.



Feel the difference

For more free patterns visit:

artgalleryfabrics.com



NOTE: While all possible care has been taken to ensure the accuracy of this pattern, we are not responsible for printing errors or the way in which individual work varies. Please read instructions carefully before starting the construction of this quilt. If desired, wash and iron your fabrics before starting to cut.

© 2014 Courtesy of Art Gallery Quilts LLC.
All Rights Reserved.

