



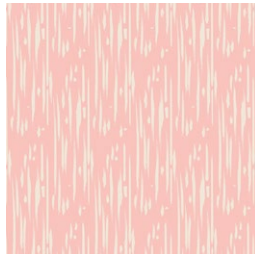
MONTHLY CURATED GROUPS



Sew Romantic



LCT-15503
MONTROSE BLOSSOMSCREME



FUS-F-1008
SHIBORI FLORALIA



LMB-18725
LITTLE FLORICULTURIST



LMB-18727
PRETTY TWIGGY



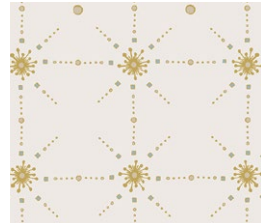
IBH-64204
VIE DE BOHÈME SUNRISE



SNT-33100
EIDELWEISS JOY



CAP-VC-5006
AMOROUS MANUSCRIPT



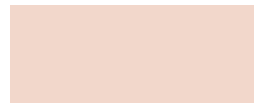
FUS-SK-1304
FROM WITHIN SPARKLER



PE-442
OCEAN WAVES



FE-516
KHAKI



PE-471
SWEET MACADAMIA

OR



FE-518
BALLERINA



FE-528
BUBBLEGUM



Dreamscape

FINISHED SIZE | 56" x 56"

FABRIC REQUIREMENTS

Fabric A	CLT-15503	½ yds.
Fabric B	FUS-F-1008	½ yds.
Fabric C	PE-442	¾ yds.
Fabric D	SNT-33100	½ yds.
Fabric E	PE-471 OR FE-518	¾ yds.
Fabric F	FE-516	¾ yds.
Fabric G	IBH-64204	5/8 yds.
Fabric H	FUS-SK-1304	½ yds.
Fabric I	CAP-VC-5006	½ yds.
Fabric J	FE-528	7/8 yds.
Fabric K	LMB-18725	7/8 yds.
Fabric L	LMB-18727	½ yds.

BACKING FABRIC

FUS-F-1008 4 yds. *(Suggested)*

BINDING FABRIC

LMB-18725 (Fabric K) *(Included)*

CUTTING DIRECTIONS

*¼" seam allowances are included.
WOF means width of fabric.*

- Cut two (2) 7½" x 7½" squares from fabric A.
- Cut one (1) 7½" x 7½" squares from fabric E, K
- Cut four (4) 9¾" x 9¾" Square from fabric I
- Cut three (3) 9¾" x 9¾" Square from fabric A, B, D, H, K, L
- Cut five (5) 9¾" x 9¾" Square from fabric C, E, F,
- Cut nine (9) 9¾" x 9¾" Square from fabric J.
- Cut six (6) 9¾" x 9¾" Square from fabric G.
- Cut Seven (7) WOF x 1½" Strips (Binding) from fabric K.

CONSTRUCTION

Sew all rights sides together with ¼" seam allowance.

HST Construction:

For this Project we will use two different HST techniques :

Four at the time HST method:

- Star by placing one 7½" Square from fabric A and K right sides together.
- Stitch at ¼" from the four edges of the squares to join them.
- Mark a diagonal line across the wrong side of fabric square.
- Using your rotary blade, cut the square in quarters following the drawn lines.
- Press each HST and trim to a 4½" x 4½" Squares.
- Repeat the same step with a 7½" square from fabric E and A.



DIAGRAM 1

Magic 8 method:

Start by placing one 9¾" Square from fabric I and D right sides together.

- Mark a diagonal line across both diagonals on the wrong side of the top fabric square.
- Sew a ¼" seam on both sides of the marked diagonal lines.
- Using your rotary blade or scissors cut the square into eighths as pictured above #3.
- You will cut a horizontal line, vertical line, and on both drawn diagonal lines.
- Open the blocks outward and lightly press. Be very careful to only press up and down, NOT back and Forth so as not to stretch them. Your seam should be pressed (both layers) toward the darker color.
- Repeat the same step with a 9¾" square from fabrics:
 - E and J.
 - B and C.
 - A and J.
 - G and F
 - I and H.

