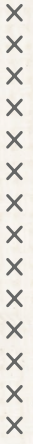


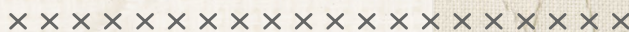
FEATURING CAMPSITE COLLECTION BY AGF STUDIO



MOONLIT CAMP



FREE PATTERN



MOONLIT CAMP

QUILT DESIGNED BY AGFstudio



Campsite

FABRICS DESIGNED BY AGF STUDIO



CAP-C-9000
SNEAKY LITTLE FOXES



CAP-C-9001
CAMPING STORIES



CAP-C-9002
WILD GATHERINGS



CAP-C-9003
DANCING DAISIES



CAP-C-9004
HEATHER & FEATHERS



CAP-C-9005
HOPPING HARE



CAP-C-9006
MIDNIGHT WISHES



CAP-C-9007
FIREFLIES GLOW



CAP-C-9008
CAMPFIRE SWEETS



CAP-C-9009
AMONG THE PINES



MOONLIT CAMP

FINISHED SIZE | 50" x 62"

FABRIC REQUIREMENTS

Fabric A	CAP-C-9000	$\frac{3}{8}$ yd.
Fabric B	CAP-C-9001	$\frac{3}{8}$ yd.
Fabric C	CAP-C-9002	$\frac{3}{8}$ yd.
Fabric D	CAP-C-9003	$\frac{5}{8}$ yd.
Fabric E	CAP-C-9004	$\frac{3}{8}$ yd.
Fabric F	CAP-C-9005	$\frac{1}{2}$ yd.
Fabric G	CAP-C-9006	1 yd.
Fabric H	CAP-C-9007	1 yd.
Fabric I	CAP-C-9008	$1\frac{1}{4}$ yd.
Fabric J	CAP-C-9009	$\frac{3}{8}$ yd.

BACKING FABRIC

CAP-C-9009 $3\frac{1}{2}$ yds. *(Suggested)*

BINDING FABRIC

CAP-C-9007 (Fabric **H**) *(included)*

CUTTING DIRECTIONS

*$\frac{1}{4}$ " seam allowances are included.
WOF means width of fabric.*

- Three (3) $10\frac{7}{8}$ " squares from fabric **A**.
- Two (2) $10\frac{7}{8}$ " squares from fabric **B**.
- One (1) $10\frac{7}{8}$ " square from fabric **C**.
- One (1) $10\frac{7}{8}$ " square from fabric **D**.
- Ten (10) moon template from fabric **D**.
- Six (6) 1" x WOF strips from fabric **D**.

- One (1) $1\frac{1}{4}$ " x WOF strip from fabric **D**.
- One (1) $10\frac{7}{8}$ " square from fabric **E**.
- Three (3) $10\frac{7}{8}$ " squares from fabric **F**.
- Six (6) 1" x WOF strips from fabric **F**.
- Ten (10) $10\frac{1}{2}$ " squares from fabric **G**.
- Three (3) $10\frac{7}{8}$ " squares from fabric **H**.
- Nine (9) 1" x WOF strips from fabric **H**.
- Twenty-four (24) $10\frac{1}{2}$ " x $5\frac{1}{2}$ " from fabric **I**.
- Nine (9) $2\frac{1}{2}$ " x WOF strips from fabric **I**.
- Two (2) $10\frac{7}{8}$ " squares from fabric **J**.

CONSTRUCTION

Sew all rights sides together with $\frac{1}{4}$ " seam allowance.

- Let's begin with the constructions of all the HST that need to be accomplished for this quilt top.
- You are making four different HST combinations, some of the fabrics are directional, place close attention at the end of the construction since you would like to use just the HST with the proper fabric placement, you will have some HST leftovers in order to be able to have all the corrected placement of fabrics.
- Start by taking one (1) $10\frac{7}{8}$ " square from fabric **A** and one (1) $10\frac{7}{8}$ " square from fabric **H**.
- Place one on top of the other, wrong side of fabrics together.
- Use a fabric erasable pen, to make a diagonal line from corner.
- Start sewing $\frac{1}{4}$ " away from the traced line to the left and $\frac{1}{4}$ " to the right..

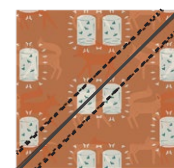
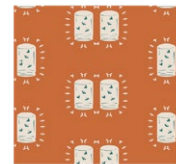


DIAGRAM 1

- Using the rotary cutter cut on top of the drawn line to end up having two (2) 10½" HST.

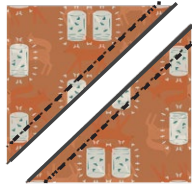


DIAGRAM 2

- Repeat the same procedure using the same fabric combination to end up having a total of six (6) AH HST.
- You are going to use just the three (3) HST that have the correct placement for fabric A.
- Press and set aside.

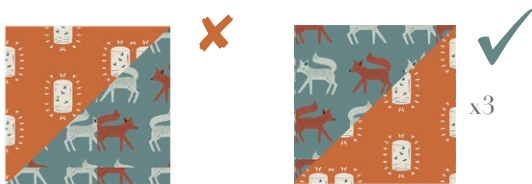


DIAGRAM 3

- Repeat the same HST procedure with the 10⅞" squares from fabric B & F.
- You will need three (3) HST from this combination.
- Set a side.



DIAGRAM 4

- Repeat the same HST procedure with the 10⅞" squares from fabric C & E.
- You will need two (2) HST from this combination.
- Set a side.



x2

DIAGRAM 5

- Repeat the same HST procedure with the 10⅞" squares from fabric D & J.
- You will need two (2) HST from this combination.
- Set a side.



x2

DIAGRAM 6

- Move on to the construction of the Camp tent.
- Take one (1) 1¼" x WOF strip from fabric D, two (2) 1" x WOF strips from fabric D three (3) 1" x WOF strips from fabric H and two (2) 1" x WOF from fabric F.
- Attach them in the order, **DHFDHFDH**, starting with the 1¼" x WOF strip from fabric D.

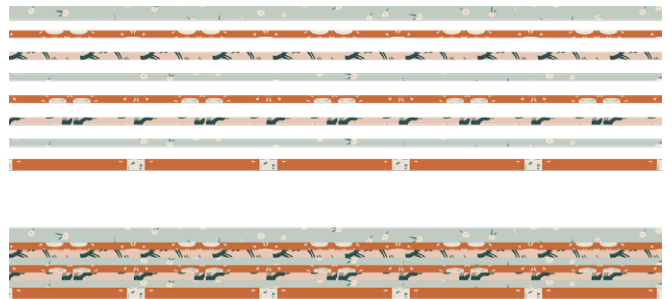


DIAGRAM 7

- Now using the triangle template cut a total of ten (10) triangles following the diagram below.



x10

DIAGRAM 8

- Take two (2) 1" x WOF strips from fabric **D** & **F** and three (3) 1" x WOF from fabric **H**.
- Attach them in the order, **HFDHFDH**.
- Make two (2) strip sets with this combination.

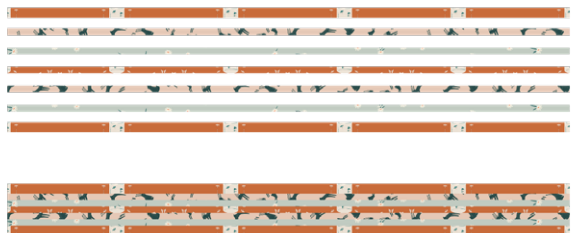


DIAGRAM 9

- Now using the tent template on the last page cut a total of ten (10) following the diagram below.
- You will be able to cut just six (6) templates from each set.



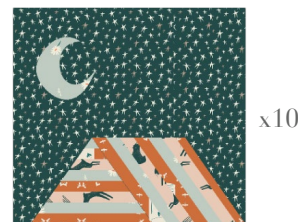
DIAGRAM 10

- Attach the triangle and tent pieces together.



DIAGRAM 11

- Take the ten (10) 10 1/2" squares from fabric **G**, ten (10) moon templates from fabric **D** and ten (10) tents you just have made.
- Appliqué one moon and one tent using Steam-A-Seam paper on top of the fabric **G** square.
- If you are not planning to quilt on top of this block it is recommended to top stitch the moon and tent to hold them in place.
- Make ten (10) in total and set aside.



x10

DIAGRAM 12

ASSEMBLING THE TOP

- In order to construct the quilt top you need to make four columns of five blocks each.
- Alternate the tent blocks with the HST following the cover picture or diagram below for block placement
- Add one 2 1/2" x 10 1/2" strip from fabric **I** in between each block.



- Use the 2 1/2" x WOF strips from fabric **I** to create five 62" strips.
- Attach them in-between the columns alternating the strips and the Columns.



QUILT ASSEMBLY

Sew rights sides together.

- Place BACKING FABRIC on a large surface wrong side up. Stretch it with masking tape against that surface.
- Place BATTING on top of backing fabric.
- Place TOP on top of the batting with right side facing up. Smooth away wrinkles using your hands.
- Pin all layers together and baste with basting thread, using long stitches. You can also use safety pins to join the layers.
- Machine or hand quilt starting at the center and working towards the corners. Remember that quilting motifs are a matter of personal preference. Have fun choosing yours!
- After you finished, trim excess of any fabric or batting, squaring the quilt to proceed to bind it.

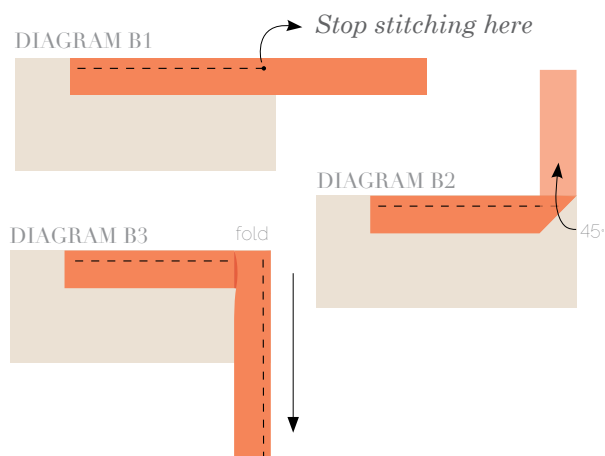
BINDING

Sew rights sides together.

- Cut enough strips $1\frac{1}{2}$ " wide by the width of the fabric **H** to make a final strip 234" long. Start sewing the binding strip in the middle of one of the sides of the quilt, placing the strip right side down and leaving an approximated 5" tail. Sew with $\frac{1}{4}$ " seam allowance (using straight stitch), aligning the strip's raw edge with the quilt top's raw edge.



- Stop stitching $\frac{1}{4}$ " before the edge of the quilt (DIAGRAM B 1). Clip the threads. Remove the quilt from under the machine presser foot. Fold the strip in a motion of 45° and upward, pressing with your fingers (DIAGRAM B2). Hold this fold with your finger, bring the strip down in line with the next edge, making a horizontal fold that aligns with the top edge of the quilt (DIAGRAM B3). Start sewing at $\frac{1}{4}$ " of the border, stitching all the layers. Do the same in the four corners of the quilt.
- Stop stitching before you reach the last 5 or 6 inches. Cut the threads and remove the quilt from under the machine presser foot. Lay the loose ends of the binding flat along the quilt edge, folding the ends back on themselves where they meet. Press them together to form a crease. Using this crease as the stitching line, sew the two open ends of the binding with right sides together (you can help yourself marking with a pencil if the crease is difficult to see).
- Trim seam to $\frac{1}{4}$ " and press open. Complete the sewing. Turn binding to back of the quilt, turn raw edge inside and stitch by hand using blind stitch.



x x

x x

*Congratulations
& enjoy*

x x



artgalleryfabrics.com

NOTE: While all possible care has been taken to ensure the accuracy of this pattern, We are not responsible for printing errors or the way in which individual work varies.

Please read instructions carefully before starting the construction of this quilt. If desired, wash and iron your fabrics before starting to cut.

© 2021 Courtesy of Art Gallery Quilts LLC. All Rights Reserved.

1" Test Square

