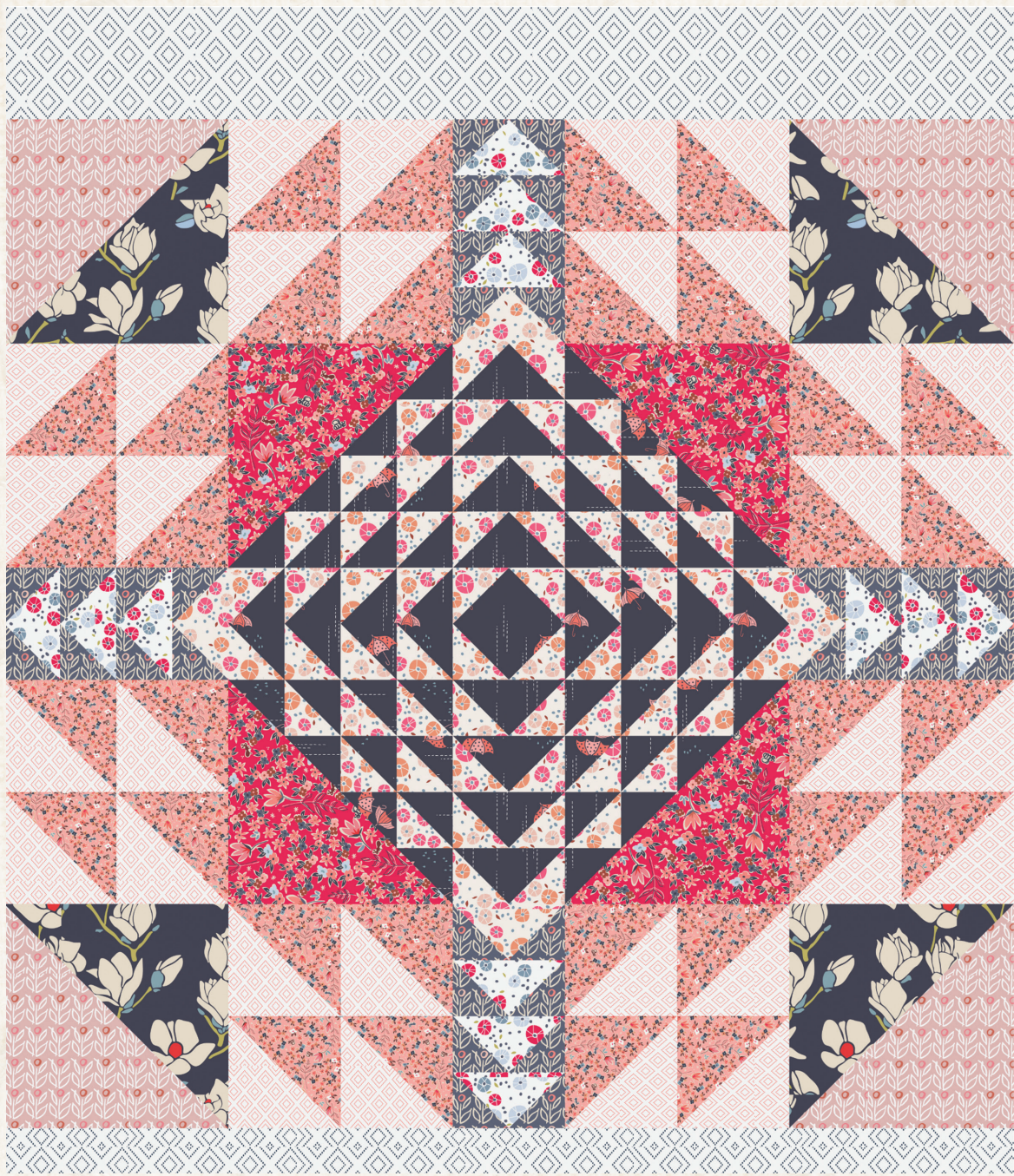


featuring CHARLESTON COLLECTION BY AMY SINIBALDI

X
X
X
X
X
X
X
X
X
X
X
X
X
X
X

QUEEN  STREET



FREE PATTERN

X X

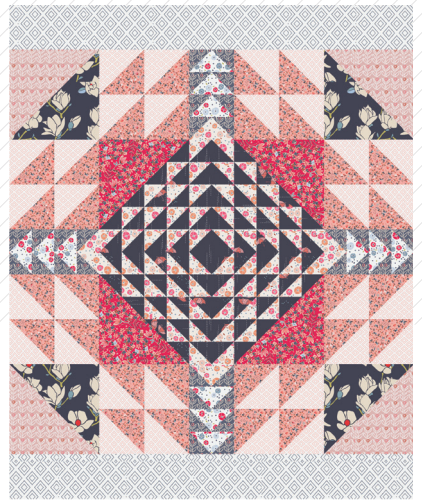
ANGLES

A DIVISION OF AGF

QUEEN STREET

AMYSINIBALDI

QUILT DESIGNED BY AMY SINIBALDI



CHARLESTON

FABRICS DESIGNED BY AMY SINIBALDI

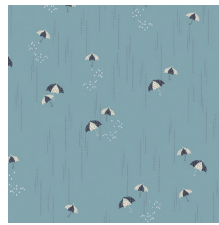
WATERFRONT PARK



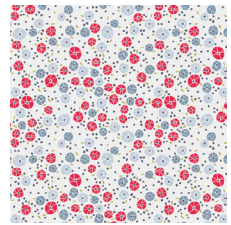
CHA-41700
MAGNOLIA NIGHTFALL



CHA-41701
STEPPING STONES MARBLE



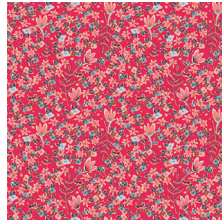
CHA-41702
RAINBRELLA MIST



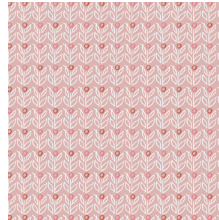
CHA-41703
BARNACLES CHERRY



CHA-41704
ANANAS POWDER



CHA-41705
GARDEN OF DREAMS ROUGE



CHA-41706
WALLFLOWER AZALEA



CHA-41707
PAVILION TEACUP

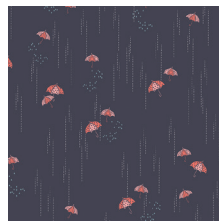
SUNSET HARBOR



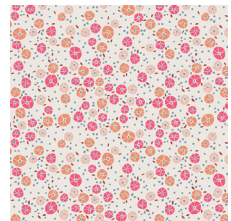
CHA-51700
MAGNOLIA SUNSET



CHA-51701
STEPPING STONES QUARTZ



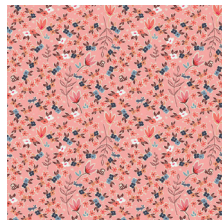
CHA-51702
RAINBRELLA SHADOW



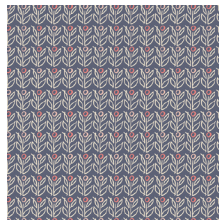
CHA-51703
BARNACLES BLUSH



CHA-51704
ANANAS CREAM



CHA-51705
GARDEN OF DREAMS ROSE



CHA-51706
WALLFLOWER JASMINE



CHA-51708
THE ROW



QUEEN STREET

FINISHED SIZE | 72" x 88"

FABRIC REQUIREMENTS

Fabric A	CHA-41701	1 1/8 yd.
Fabric B	CHA-41706	1/2 yd.
Fabric C	CHA-41700	1/2 yd.
Fabric D	CHA-41705	1/2 yd.
Fabric E	CHA-51705	1 1/4 yd.
Fabric F	CHA-51701	1 1/4 yd.
Fabric G	CHA-51706	5 1/2 yd.
Fabric H	CHA-41703	1/2 yd.
Fabric I	CHA-51703	1 1/8 yd.
Fabric J	CHA-51702	1 1/4 yd.

BACKING FABRIC

5 yds. Fabric **G** (included)

BINDING FABRIC

3/4 yd. Fabric **A** (included)

CUTTING DIRECTIONS

1/4" seam allowances are included.
WOF means width of fabric.

Two (4) 8 1/2" x WOF" strips from Fabrics **A**

Two (2) 16 7/8" squares from Fabric **B, C,** and **D**

Sixteen (16) 8 7/8" squares from Fabrics **E** and **F**

Sixteen (16) 4 7/8" squares from Fabric **G**

Twelve (12) 8 1/2" x 4 1/2" rectangles from Fabric **H**

Twelve (12) 4 7/8" squares from Fabric **I**

Four (4) 8 1/2" x 4 1/2" rectangles from Fabric **I**

Thirty-Six (36) 4 1/2" squares from Fabric **I**

One (1) 6 1/2" square from Fabric **J**

Sixteen (16) 4 1/2" squares from Fabric **J**

CONSTRUCTION

Sew all rights sides together with 1/4" seam allowance.

- With right sides facing, pair each of the sixteen (16) 8 7/8" squares of fabric **E** and **F**
- Draw a diagonal line on the wrong side of each pair. Sew a 1/4" seam on either side of the drawn line.
- Cut directly on the drawn line. Press each unit open. You'll now have thirty-two HST 8 1/2" units.



DIAGRAM 1

- Sew eight blocks consisting of four (4) HST units as shown. This block measures 16 1/2" :

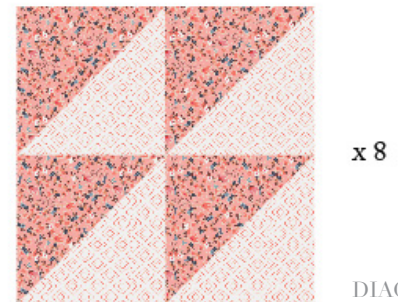


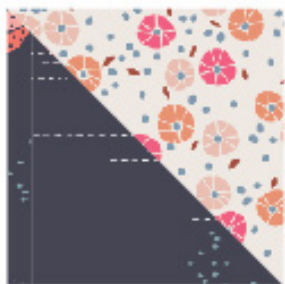
DIAGRAM 2

- With right sides facing, pair two (2) 16 7/8" squares of fabric **B** with two (2) 16 7/8" squares of fabric **C**.
- Draw a diagonal line on the wrong side of each pair. Sew a 1/4" seam on either side of the drawn line.
- Cut directly on the drawn line. Press each unit open. You'll now have four HST 16 1/2" units.



DIAGRAM 3

- With right sides facing, pair three (3) $4 \frac{7}{8}$ " squares of fabric I with three (3) $4 \frac{7}{8}$ " squares of fabric J.
- Draw a diagonal line on the wrong side of each pair. Sew a $\frac{1}{4}$ " seam on either side of the drawn line.
- Cut directly on the drawn line. Press each unit open. You'll now have six HST $4 \frac{1}{2}$ " units.



x 6

DIAGRAM 4

- Arrange the six HST units with four (4) $4 \frac{1}{2}$ " squares of fabric J as shown.
- Then sew the columns together:



DIAGRAM 5

- Trim the unit so that is half of a 17 " square.
- Trim two (2) $16 \frac{7}{8}$ " squares of fabric D into four (4) HST's.
- Pair one with the unit and sew together. Trim to $16 \frac{1}{2}$ " square. Repeat until you have four of these units.



x 4

DIAGRAM 6

x x

- Arrange the following blocks and sew together. It will finish at $32 \frac{1}{2}$ ". Repeat until you have four of these blocks



x 4

DIAGRAM 7

- To sew the geese blocks, mark a diagonal line on two (2) $4 \frac{1}{2}$ " squares of fabric I.
- Arrange on top of a $8 \frac{1}{2}$ " x $4 \frac{1}{2}$ " rectangle of fabric J and sew directly on the drawn lines.
- Trim, leaving a $\frac{1}{4}$ " seam allowance and press.



DIAGRAM 8

- Each flying geese block should measure $8 \frac{1}{2}$ " x $4 \frac{1}{2}$ ".



x 4



x 1



x 3

DIAGRAM 9

- Make four of these units.



x 4

DIAGRAM 10

- Cut two (2) $4\frac{1}{2}$ " squares of fabric I diagonally so that you have four (4) HSTs.
- Add to the sides of a $6\frac{1}{2}$ " square of fabric J. Trim to $8\frac{1}{2}$ " square.

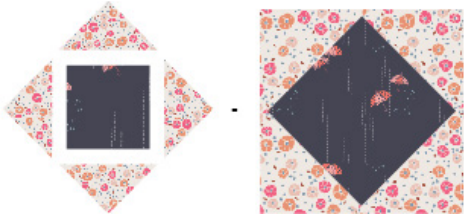


DIAGRAM 11

ASSEMBLING THE QUILT TOP

Sew all right sides together with $\frac{1}{4}$ " seam allowance. Press open.

- Refer to the cover quilt illustration and the diagram below to assemble the quilt top.
- Sew two flying geese units to either side of the block just completed, as shown:

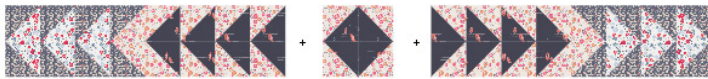


DIAGRAM 12

- Sew two HST units to either side of a flying geese unit, as shown. Repeat, so you have two of these:

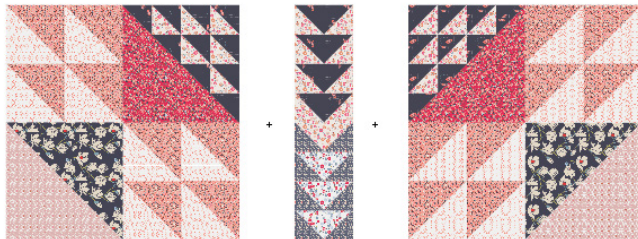


DIAGRAM 13

- Sew the three units together, as shown:

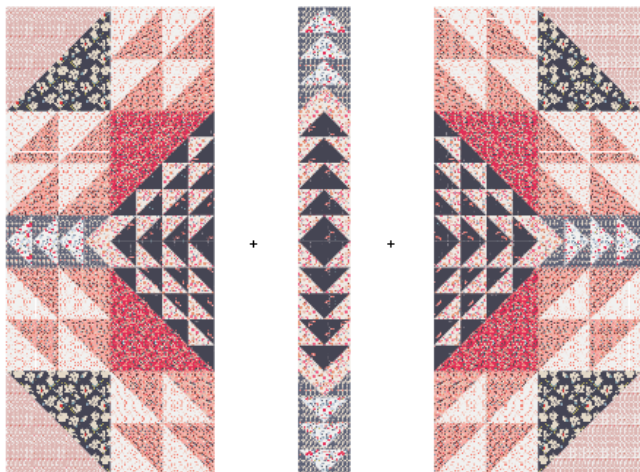


DIAGRAM 14

XX

- Add the top and bottom $72\frac{1}{2}$ " x $8\frac{1}{2}$ " borders of Stepping Stones in Marble.

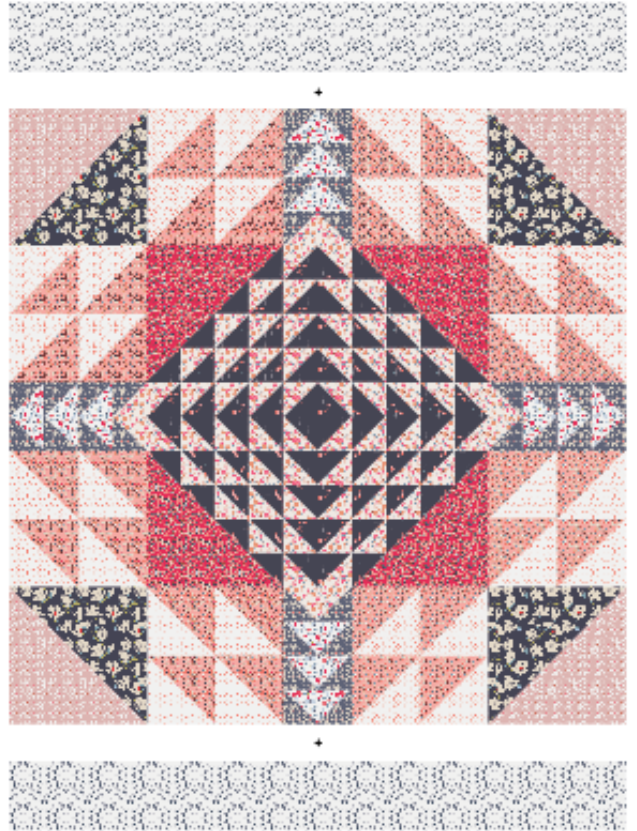


DIAGRAM 15

- Make the quilt sandwich, baste, quilt as desired, trim and bind using your preferred method.

QUILT ASSEMBLY

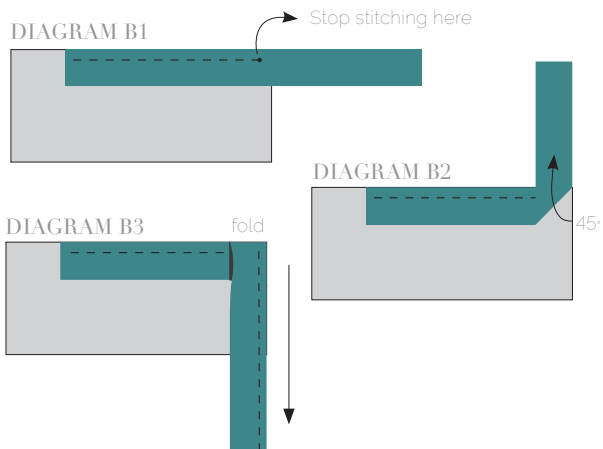
- Cut Backing Fabric into 2 equal rectangles, each $2\frac{1}{4}$ yd. x WOF. Trim off selvage edges and sew them together along this lengthwise edge, right sides together. Press open the seam.
- Place BACKING FABRIC on a large surface wrong side up. Stretch it with masking tape against that surface.
- Place BATTING on top of backing fabric.
- Place TOP on top of the batting with right side facing up. Smooth away wrinkles using your hands.
- Pin all layers together and baste with basting thread, using long stitches. You can also use safety pins to join the layers.

- Machine or hand quilt starting at the center and working towards the corners. Remember that quilting motifs are a matter of personal preference. Have fun choosing yours!
- After you finished, trim excess of any fabric or batting, squaring the quilt to proceed to bind it.

BINDING

Sew rights sides together.

- Sew your 7 WOF binding strips together to make a final strip 330" long. Start sewing the binding strip in the middle of one of the sides of the quilt, placing the strip right side down and leaving an approximat-
ed 5" tail. Sew with ¼" seam allowance (using straight stitch), aligning the strip's raw edge with the quilt top's raw edge.
- Stop stitching ¼" before the edge of the quilt (**DIAGRAM B 1**). Clip the threads. Remove the quilt from under the machine presser foot. Fold the strip in a motion of 45° and upward, pressing with your fingers (**DIAGRAM B 2**). Hold this fold with your finger, bring the strip down in line with the next edge, making a horizontal fold that aligns with the top edge of the quilt (**DIAGRAM B 3**). Start sewing at ¼" of the border, stitching all the layers. Do the same in the four corners of the quilt.



- Stop stitching before you reach the last 5 or 6 inches. Cut the threads and remove the quilt from under the machine presser foot. Lay the loose ends of the binding flat along the quilt edge, folding the ends back on themselves where they meet. Press them together to form a crease. Using this crease as the stitching line, sew the two open ends of the binding with right sides together (you can help yourself marking with a pencil if the crease is difficult to see).

- Trim seam to ¼" and press open. Complete the sewing. Turn binding to back of the quilt, turn raw edge inside and stitch by hand using blind stitch.
- Congrats! You've finished your beautiful Hello, Ollie Quilt!



artgalleryfabrics.com

NOTE: While all possible care has been taken to ensure the accuracy of this pattern, We are not responsible for printing errors or the way in which individual work varies. Please read instructions carefully before starting the construction of this quilt. If desired, wash and iron your fabrics before starting to cut.

© 2017 Courtesy of Art Gallery Quilts LLC. All Rights Reserved.