

Alation

n. The state of being winged.

{ FEATURING WINGED COLLECTION }



FREE PROJECT SHEET

DESIGNED BY

*Bonnie
Christine*

DESIGNED BY *Bonnie Christine*

Alation

n. The state of being winged.

FINISHED SIZE: 60" X 72"



KIT QUANTITY

NORTHERN MIGRATION

WNG-1024	2 yd.
WNG-1028	1 yd.
WNG-1027	1 1/3 yd.
WNG-1023	1 yd.
WNG-1025	7/8 yd.
WNG-1026	7/8 yd.
WNG-1021	7/8 yd.
WNG-1029	5/8 yd.
Backing	5 yd.

KIT QUANTITY

SOUTHERN MIGRATION

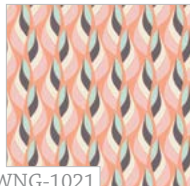
WNG-2024	2 yd.
WNG-2028	1 yd.
WNG-2027	1 1/3 yd.
WNG-2023	1 yd.
WNG-2025	7/8 yd.
WNG-2026	7/8 yd.
WNG-2021	7/8 yd.
WNG-2029	5/8 yd.
Backing	5 yd.



NORTHERN MIGRATION



WNG-1020
Wingspan Melon



WNG-1021
Metamorphosis Quart



WNG-1022
Birds' Peck Jade



WNG-1023
Flyaway Petalums Vert



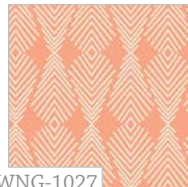
WNG-1024
Frilly Flutters Creme



WNG-1025
Nesting Blooms Cool



WNG-1026
Aves Chatter Shine



WNG-1027
Plumage Apricot



WNG-1028
Mimicry Beryl



WNG-1029
Feathered Flight Acorn

SOUTHERN MIGRATION



WNG-2020
Wingspan Fig



WNG-2021
Metamorphosis Coral



WNG-2022
Birds' Peck Dahlia



WNG-2023
Flyaway Petalums Sky



WNG-2024
Frilly Flutters Mist



WNG-2025
Nesting Blooms Warm



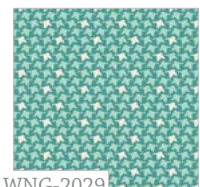
WNG-2026
Aves Chatter Dim



WNG-2027
Plumage Poppy



WNG-2028
Mimicry Hazel



WNG-2029
Feathered Flight Sunken





Alation

n. The state of being winged.

FINISHED SIZE: 60" × 72"



NORTHERN MIGRATION



SOUTHERN MIGRATION

FABRIC REQUIREMENTS

Fabric A	WNG-1024	2 yd.
Fabric B	WNG-1028	1 yd.
Fabric C	WNG-1027	1 1/3 yd.
Fabric D	WNG-1023	1 yd.
Fabric E	WNG-1025	7/8 yd.
Fabric F	WNG-1026	7/8 yd.
Fabric G	WNG-1021	7/8 yd.
Fabric H	WNG-1029	5/8 yd.

Backing Fabric

WNG-1020 5 yds. (suggested)

Binding Fabric

WNG-1027 (Fabric **C**) (included)

FABRIC REQUIREMENTS

Fabric A	WNG-2024	2 yd.
Fabric B	WNG-2028	1 yd.
Fabric C	WNG-2027	1 1/3 yd.
Fabric D	WNG-2021	1 yd.
Fabric E	WNG-2025	7/8 yd.
Fabric F	WNG-2026	7/8 yd.
Fabric G	WNG-2023	7/8 yd.
Fabric H	WNG-2029	5/8 yd.

Backing Fabric

WNG-2020 5 yds. (suggested)

Binding Fabric

WNG-2027 (Fabric **C**) (included)



CUTTING DIRECTIONS

1/4" seam allowances are included.

Thirty Four (34) 3" x 3" squares & Three Hundred Twenty Four (324) 2 1/2" x 2 1/2" squares from fabric **A**

Thirteen (13) 3" x 3" squares & One Hundred Twenty Two (122) 2 1/2" x 2 1/2" squares from fabric **B**

Five (5) 3" x 3" squares & Thirty Eight (38) 2 1/2" x 2 1/2" squares from fabric **C**

Thirty Two (32) 3" x 3" squares & One Hundred Twenty (120) 2 1/2" x 2 1/2" squares from fabric **D**

One (1) 3" x 3" squares & One Hundred Sixteen (116) 2 1/2" x 2 1/2" squares from fabric **E**

Nine (9) 3" x 3" squares & One Hundred Twelve (112) 2 1/2" x 2 1/2" squares from fabric **F**

Fourteen (14) 3" x 3" squares & Ninety Two (92) 2 1/2" x 2 1/2" squares from fabric **G**

Six (6) 3" x 3" squares and Fourty Two (42) 2 1/2" x 2 1/2" squares from fabric **H**

Cutting Fusible & Trim

FUSIBLE 2 1/2" QUILTER'S GRID INTERFACING: (we used Bosal 327CB) 4 1/2 yds.

Note: You will need four sections, 15 squares wide and 18 squares long. Cut the Fusible Quilt Smart into four (4) sections, making sure that you have 15 squares across and 18 squares down for each section.

TRIM: Cut 3 1/2 yds. of large pom pom trim.

Half Square Triangle Construction

- Before you begin sewing, carefully label each group of fabric squares by fabric name and size. Small containers or zip lock bags would work well.
- Although the quilt is primarily made of squares, several half-square triangles are needed along the edges of the butterfly so that the wings and antennae angle. Use the following method for making all the half square triangles: Pair two 3" squares together. (Each pair will yield two half square triangle units.) On the lighter square, draw a diagonal line on the wrong side of the fabric. Stitch 1/4" away from the drawn line, on both sides. Cut on the drawn line. You now have two half square triangle units. Press seam allowance to the darker fabric.
- A "fudge factor" is included, so trimming will be necessary: using a square ruler, square each unit to 2 1/2", placing the diagonal line of the ruler on the seam.

You will need the following half square triangle units:

FABRICS	UNITS
A & C	8
D & A	58
D & E	2
F & D	4
F & C	2
G & B	22
F & G	6
F & H	6
H & B	4
H & A	2



Assembling the Top

- Work in the quarter sections as shown in Figure A. Place the fusible grid on your workspace with the fusible side facing up. Begin to fill in the design, referring to the diagrams. Fuse in place with an iron, being careful not to touch the fusible with the iron. A small iron such as Clover's mini iron works great.



Figure A

- Fold the piece over vertically so that the first two rows are right sides together. Stitch with a $\frac{1}{4}$ " seam from top to bottom. Continue folding and stitching each vertical row. Don't press any seams yet. Working from the fusible side, clip at each intersecting line just to the stitching line. Figure B.

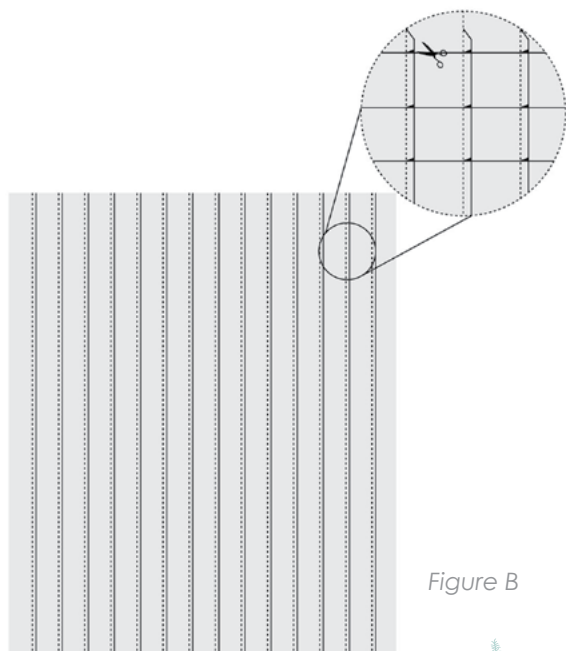


Figure B



- Next, fold the first two horizontal rows right sides together and stitch the seam in the same way. Finger press the intersecting seam allowances in opposite directions so that the intersection will lay flatter. Continue folding and stitching each seam, paying careful attention that the seams always fall in opposite directions. Press from the back side as shown in Figure C.

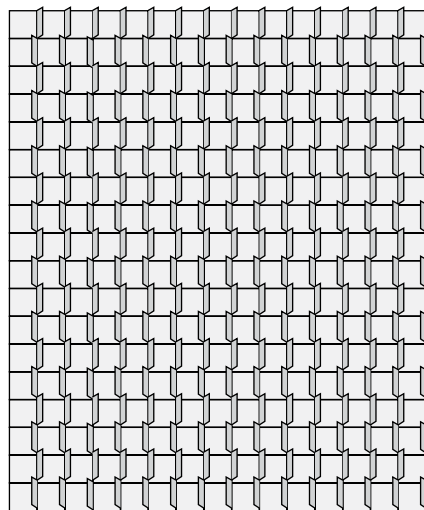


Figure C

- After completing all four sections, stitch the top two together. Stitch the bottom two together, then stitch the center horizontal seam.

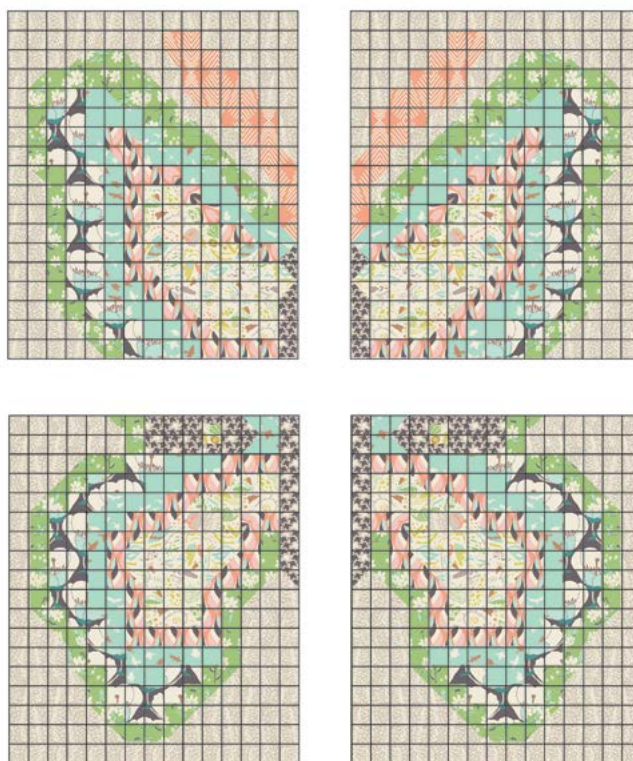
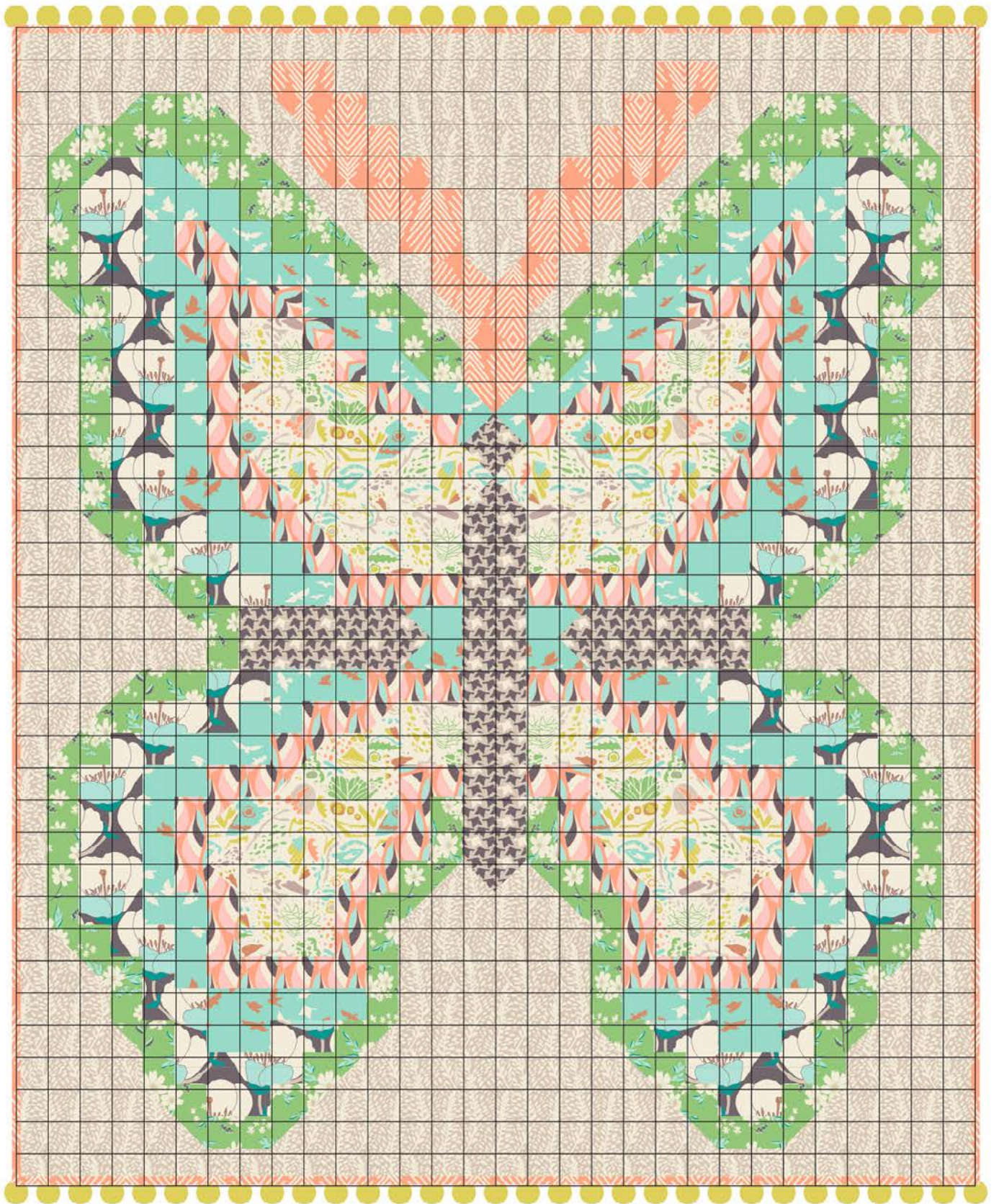


Figure D

- Layer, quilt and bind. Stitch the pom pom trim to the binding at the top and bottom.



QUILT ASSEMBLY

- Place BACKING FABRIC on a large surface wrong side up. Stretch it with masking tape against that surface.
- Place BATTING on top of backing fabric.
- Place TOP on top of the batting with right side facing up. Smooth away wrinkles using your hands.
- Pin all layers together and baste with basting thread, using long stitches. You can also use safety pins to join the layers.
- Machine or hand quilt starting at the center and working towards the corners. Remember that quilting motifs are a matter of personal preference. Have fun choosing yours!
 - After you finished, trim excess of any fabric or batting, squaring the quilt to proceed to bind it.



Feel the difference

For more free patterns visit:

artgalleryfabrics.com

NOTE: While all possible care has been taken to ensure the accuracy of this pattern, we are not responsible for printing errors or the way in which individual work varies. Please read instructions carefully before starting the construction of this quilt. If desired, wash and iron your fabrics before starting to cut.

© 2014 Courtesy of Art Gallery Quilts LLC.
All Rights Reserved.

BINDING

Sew right sides together.

- Cut enough strips 1½" wide by the width of the fabric C to make a final strip 274" long. Start sewing the binding strip in the middle of one of the sides of the quilt, placing the strip right side down and leaving an approximated 5" tail. Sew with ¼" seam allowance (using straight stitch), aligning the strip's raw edge with the quilt top's raw edge.
- Stop stitching ¼" before the edge of the quilt (DIAGRAM B 1). Clip the threads. Remove the quilt from under the machine presser foot. Fold the strip in a motion of 45° and upward, pressing with your fingers (DIAGRAM B2). Hold this fold with your finger, bring the strip down in line with the next edge, making a horizontal fold that aligns with the top edge of the quilt (DIAGRAM B3). Start sewing at ¼" of the border, stitching all the layers. Do the same in the four corners of the quilt.
- Stop stitching before you reach the last 5 or 6 inches. Cut the threads and remove the quilt from under the machine presser foot. Lay the loose ends of the binding flat along the quilt edge, folding the ends back on themselves where they meet. Press them together to form a crease. Using this crease as the stitching line, sew the two open ends of the binding with right sides together (you can help yourself marking with a pencil if the crease is difficult to see).
- Trim seam to ¼" and press open. Complete the sewing. Turn binding to back of the quilt, turn raw edge inside and stitch by hand using blind stitch.

