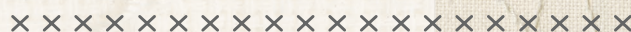
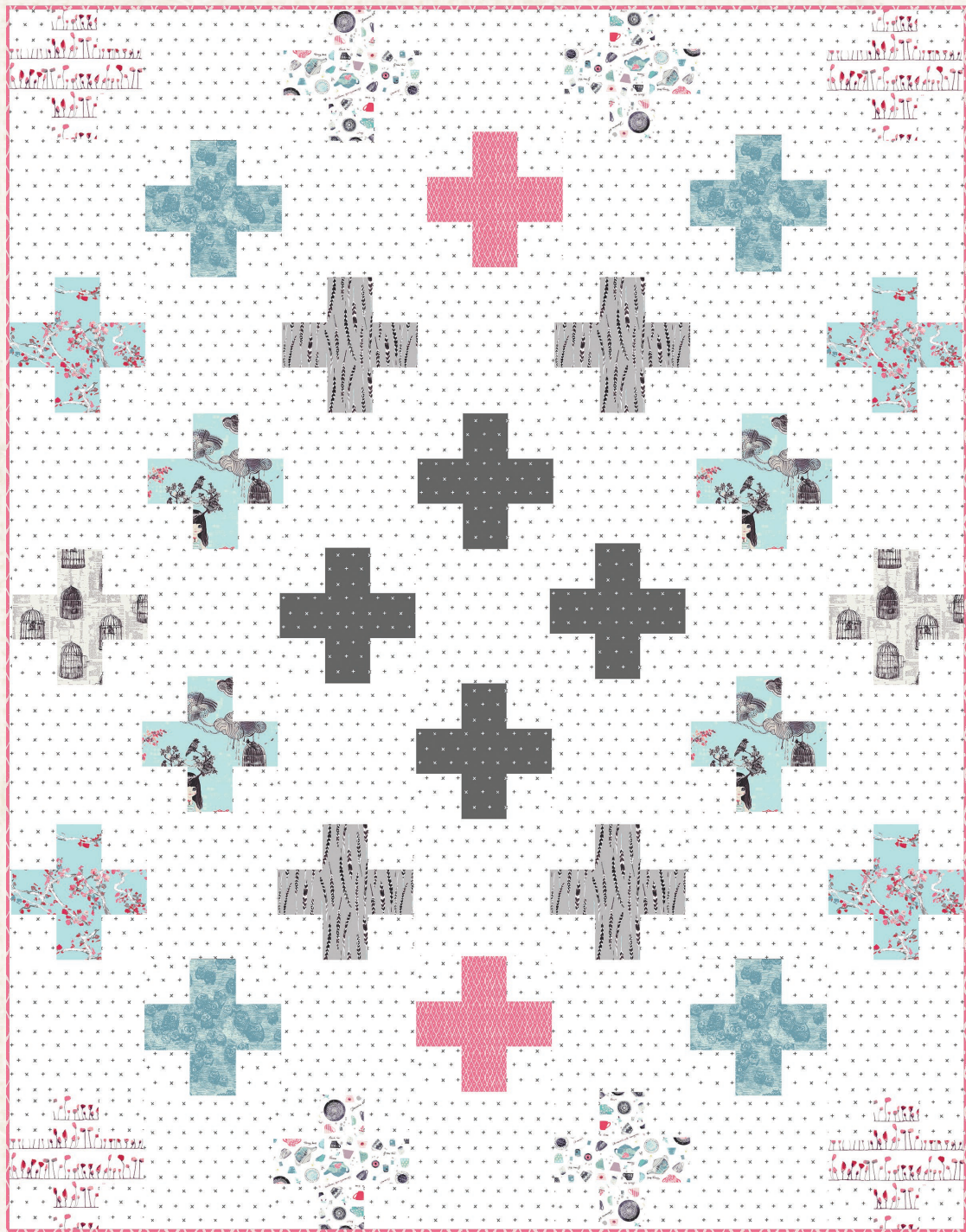


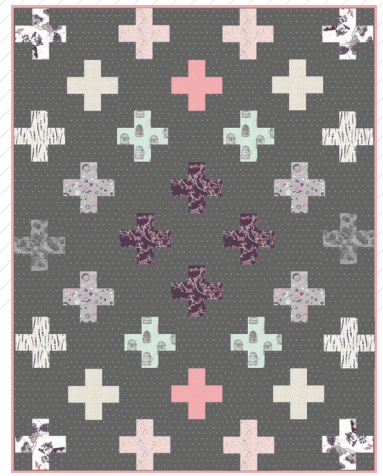


mad crosser



mad crosser *Katarina Roccella*

QUILT DESIGNED BY KATARINA ROCCELLA



COLOR OPTION

Wonderland

FABRICS DESIGNED BY KATARINA ROCCELLA.

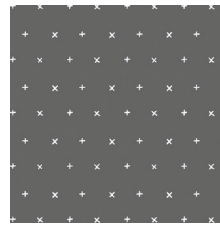
ALICESKY



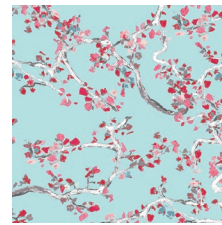
WND-1530
MINT-TEA CONDITION



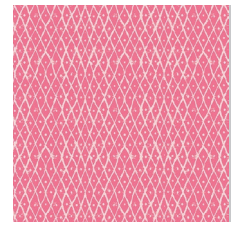
WND-1531
OWLY BLUE



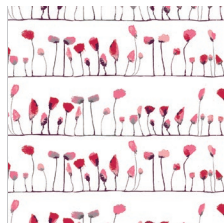
WND-1532
YOUR HEART TIMID



WND-1533
ENCHANTED LEAVES AIR



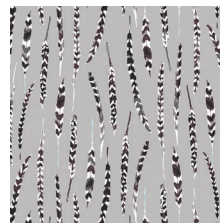
WND-1534
DIAMOND FLUSH DANCE



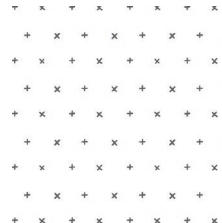
WND-1535
PETAL FLAMINGOES LOVE



WND-1536
UNCAGED WORDS LINEN



WND-1537
CHESHIRE FEATHERS FOG



WND-1538
YOUR HEART PURE



WND-1540
WONDERLAND FONDANT

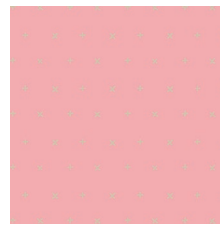
ALICEBERRY



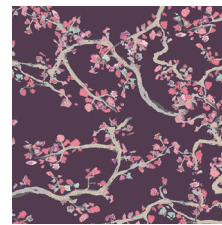
WND-2530
PRET-TEA STATE



WND-2531
OWLY BOO



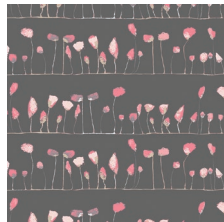
WND-2532
YOUR HEART PINK



WND-2533
ENCHANTED LEAVES PLUM



WND-2534
DIAMOND FLUSH GOLD



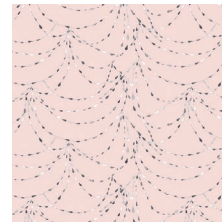
WND-2535
PETAL FLAMINGOES COO



WND-2536
UNCAGED WORDS MINT



WND-2537
CHESHIRE FEATHERS PASTRY



WND-2539
ROSEWATER TEARS



WND-2540
WONDERLANDIA CONFECTION



madcrosser

FINISHED SIZE | 74' x 95'

FABRIC REQUIREMENTS

Fabric A	WND-1530	1/3 yd.
Fabric B	WND-1531	1/3 yd.
Fabric C	WND-1532	1/3 yd.
Fabric D	WND-1533	1/3 yd.
Fabric E	WND-1534	1 yd.
Fabric F	WND-1535	1/3 yd.
Fabric G	WND-1536	1/3 yd.
Fabric H	WND-1537	1/3 yd.
Fabric I	WND-1540	1/3 yd.
Fabric J	WND-1538	4 1/8 yd.

BACKING FABRIC

WND-1533 6 yds. (Suggested)

BINDING FABRIC

WND-1534 (Fabric E) (included)

CUTTING DIRECTIONS

1/4" seam allowances are included.
WOF means width of fabric.

Eight (8) 4' squares from fabrics A-I.

Four (4) 4' x 11' rectangles from fabrics A-I.

Thirty-one (31) 11' squares from fabric J.

One-hundred Twenty-eight (128) 4' squares from fabric J.

CONSTRUCTION

Sew all rights sides together with 1/4" seam allowance.

- Take two 4' squares from fabric A and four 4' squares from fabric J
- Attach two sets together in the order JAJ to form a single strip set. Press seams open.



DIAGRAM 1

- Arrange pieces with a 4' x 11' rectangle from fabric A in the middle.
- Sew together along the long edges to complete the block. Press seams open.
- Repeat the previous steps to create a total of thirty-two blocks (32) four from each fabric A-I



DIAGRAM 2

ASSEMBLING THE TOP

Sew all rights sides together with 1/4" seam allowance. Press open.

- Now that you have a total of thirty-two crosses blocks start arranging them together with the 11' squares from fabric J.
- Attach them together in nine rows of seven blocks each alternating the crosses blocks with the 11' squares. Press seams open.
- Refer to cover photo for fabric placement.
- Sew rows together to complete quilt top.
- Press seams open.

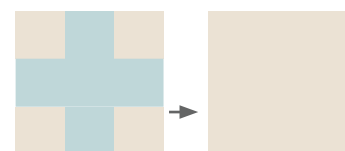


DIAGRAM 2

QUILT ASSEMBLY

Sew rights sides together.

- Place BACKING FABRIC on a large surface wrong side up. Stretch it with masking tape against that surface.
- Place BATTING on top of backing fabric.
- Place TOP on top of the batting with right side facing up. Smooth away wrinkles using your hands.
- Pin all layers together and baste with basting thread, using long stitches. You can also use safety pins to join the layers.
- Machine or hand quilt starting at the center and working towards the corners. Remember that quilting motifs are a matter of personal preference. Have fun choosing yours!
- After you finished, trim excess of any fabric or batting, squaring the quilt to proceed to bind it.

BINDING

Sew rights sides together.

- Make the double fold binding which has double thickness.
- Cut enough strips 2¼' wide by the width of the fabric **E** to make a final strip 348" long.
- Fold and press the long strip in half lengthwise (on the shorter side), wrong sides together.
- Cut the beginning of the binding strip at a 45° angle. Start sewing the binding strip in the middle of one of the sides of the quilt, leaving approximately 5' long tail loose. Sew with ¼' seam allowance (using straight stitch), aligning the strip's raw edge with the quilt top's raw edge. Pin in place if needed.
- When your needle is ¼" from the corner, turn the quilt and stitch off at a 45° angle and stitch reaching the end of that corner (diagram 1).

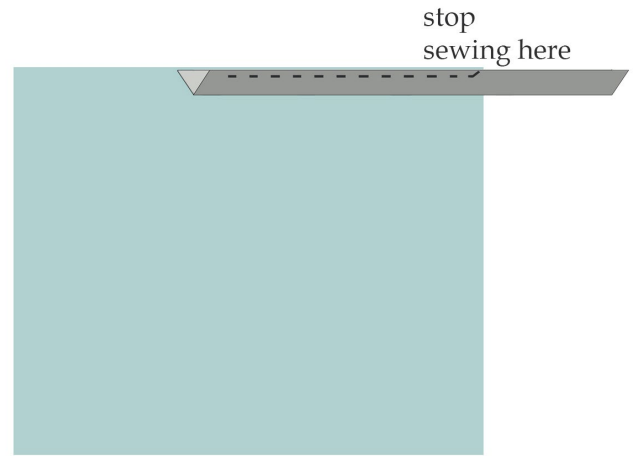


diagram 1

- Turn the quilt and fold the strip in a motion of 45° and upward, pressing with your fingers, using the angled stitch as your guide (diagram 2).

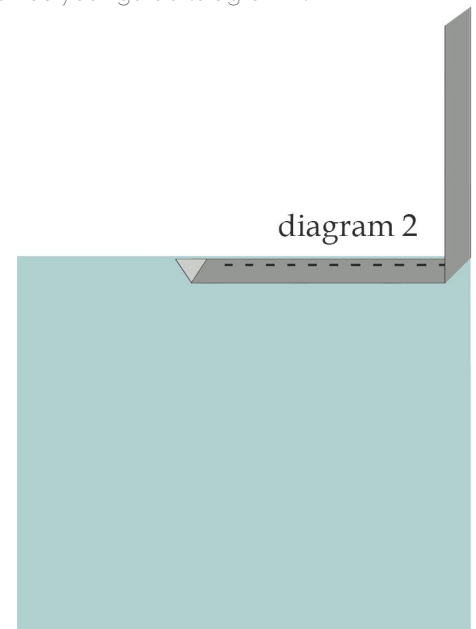


diagram 2

- Hold this fold with your finger, bring the strip down in line with the next edge, making a horizontal fold that aligns with the top edge of the quilt (diagram 3)

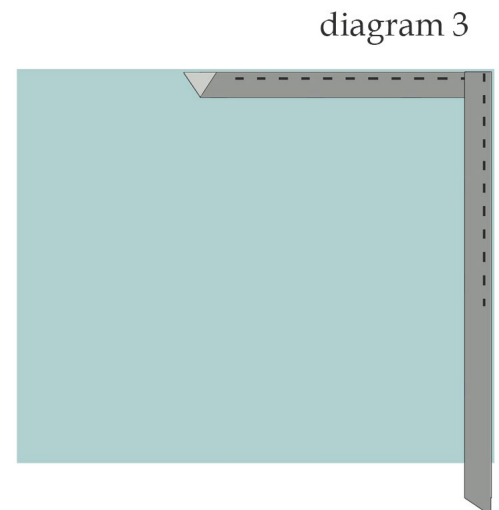


diagram 3

- Start sewing at $\frac{1}{4}$ " of the border, stitching all the layers. Do the same in the four corners of the quilt.
- When approaching the starting point, stop stitching at least 10" from where you started, leaving another tail, at least 6" long. There will be a gap between the stitched bindings. Unfold the ending binding and align it nicely with the quilt edge. Open the ending strip toward the quilt, right sides together and place the beginning of the binding strip that is cut at 45° inside the open part of the ending binding strip. Using a pencil or a pin, mark the line on the ending binding strip where the begging piece lays (diagram 4).

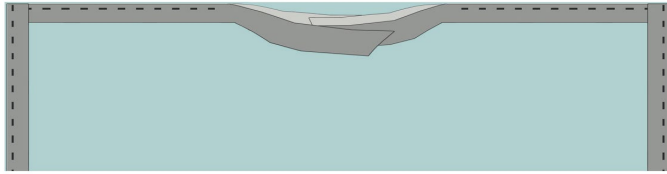


diagram 4

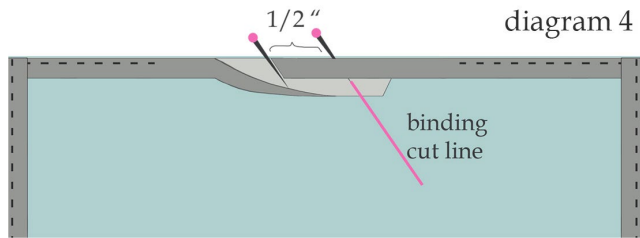
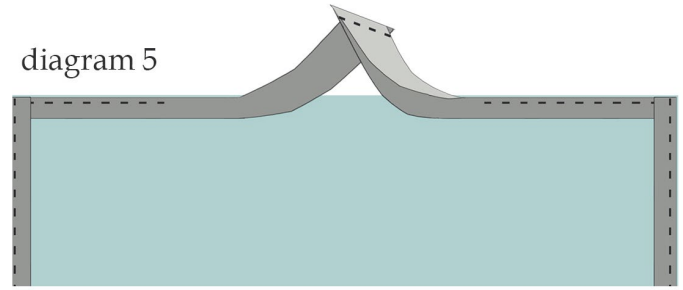


diagram 5



artgalleryfabrics.com

NOTE: While all possible care has been taken to ensure the accuracy of this pattern, We are not responsible for printing errors or the way in which individual work varies. Please read instructions carefully before starting the construction of this quilt. If desired, wash and iron your fabrics before starting to cut.

© 2015 Courtesy of Art Gallery Quilts LLC. All Rights Reserved.