

X
X
X
X
X
X
X
X
X
X
X
X
X
X
X

Greenhouse



FREE PATTERN

XXXXXXXXXXXXXXXXXXXXXXXXXXXX



Greenhouse

QUILT DESIGNED BY *AGFstudio*

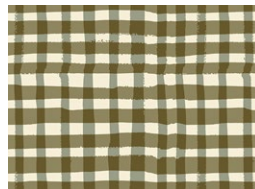


the *Season* of **TRIBUTE**

chapter three	TITLE <i>Roots of Nature</i>	DESIGNER BONNIE CHRISTINE
---------------	------------------------------	----------------------------------



TRB3010
AVES CHATTER THREE



TRB3002
WOOLY THREE



TRB3000
FORAGED GARLAND THREE



TRB3001
TIMBERLAND THREE



TRB3007
SUMMIT THREE



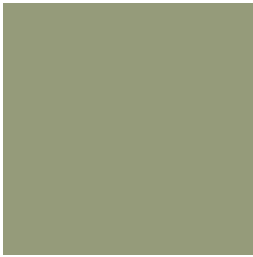
TRB3005
ROADSIDE WILDFLOWERS THREE



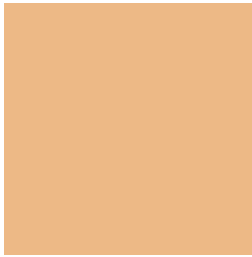
TRB3009
WINGSPAN THREE



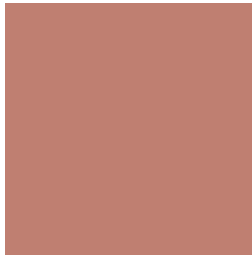
ADDITIONAL BLENDERS FOR THIS PROJECT



PE502
FRESH SAGE



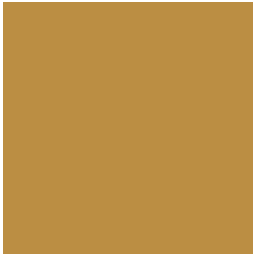
PE509
GEORGIA PEACH



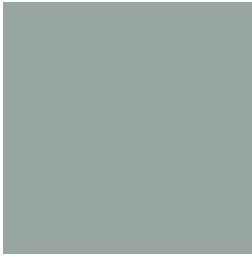
PE472
CINNAMON



PE460
SIENNA BRICK



PE421
HONEY



PE500
OCEAN FOG



PE524
VINTAGE WALNUT



FE513
HONEY MUSTARD

Greenhouse

FINISHED SIZE | 79" x 79"

FABRIC REQUIREMENTS

Fabric A	TRB3010	4 yds.
Fabric B	TRB3002	½ yd.
Fabric C	TRB3000	½ yd.
Fabric D	TRB3001	¾ yd.
Fabric E	TRB3007	¾ yd.
Fabric F	TRB3005	½ yd.
Fabric G	TRB3009	¾ yd.
Fabric H	PE502	⅞ yd.
Fabric I	PE509	¼ yd.
Fabric J	PE472	¼ yd.
Fabric K	PE460	¼ yd.
Fabric L	PE421	¼ yd.
Fabric M	PE500	¾ yd.
Fabric N	FE513	¾ yd.
Fabric O	PE524	1 yd.

BACKING FABRIC
TRB3002 5 yds (*Suggested*)

BINDING FABRIC
Fabric **H** PE502 (*Included*)

- Cut template 3 following the diagram below.

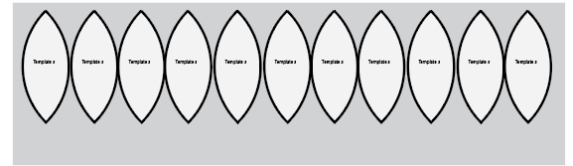


DIAGRAM 1

- For fabric **D**, cut template 2 and 3 following the diagram below.

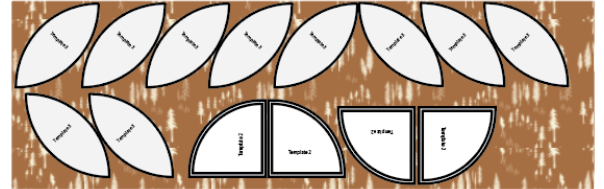


DIAGRAM 2

- For fabric **F**, cut template 2 and 3 following the diagram below.

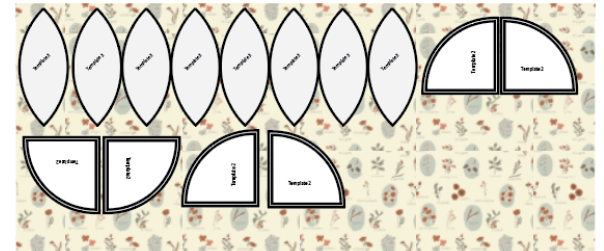


DIAGRAM 3

- For fabric **G**, cut template 2 following the diagram below.



DIAGRAM 4

CUTTING DIRECTIONS

*¼" seam allowances are included.
WOF means width of fabric.*

- Six (6) 14" squares from fabric **A**.
- Fifty two (52) template 1 from fabric **A**.
- Sixty nine (69) 6½" squares from fabric **A**.
- Twelve (12) template 3 from fabric **B**.
- Four (4) template 2 from fabric **B**.
- Eight (8) template 3 from fabric **C**.
- Six (6) template 2 from fabric **C**.
- Ten (10) template 3 from fabric **D** (see diagram 2 for cutting reference).
- Four (4) template 2 from fabric **D** (see diagram 2 for cutting reference).
- Fifteen (15) template 3 from fabric **E**.
- Eight (8) template 2 from fabric **E**.
- Eight (8) template 3 from fabric **F** (see diagram 3 for cutting reference).
- Six (6) template 2 from fabric **F** (see diagram 3 for cutting reference).
- Eight template 2 from fabric **G** (see diagram 4 for cutting reference).
- Ten (10) template 3 from fabric **H**.
- Four (4) template 2 from fabric **H**.
- Eight (8) 1½" x WOF strips from fabric **H** (binding).
- Six (6) template 3 from fabric **I**.
- Eight (8) template 3 from fabric **J**.
- Six (6) template 3 from fabric **K**.
- Four (4) template 3 from fabric **L**.
- Four (4) template 2 from fabric **L**.
- Eight (8) template 3 from fabric **M**.
- Four (4) template 2 from fabric **M**.
- Eight (8) template 3 from fabric **N**.
- Four (4) template 2 from fabric **N**.
- Six (6) 14" squares from fabric **O**.

CONSTRUCTION

Sew all rights sides together with ¼" seam allowance.

Magic 8 technique

- Take two (2) 14" squares and place them right sides together.
- Draw a line diagonally corner to corner using a mechanical pencil or frixion pen.

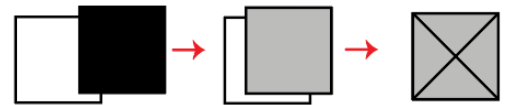


DIAGRAM 5

- Stitch ¼" on each side of the drawn lines.



DIAGRAM 6

- Cut the squares in both directions.

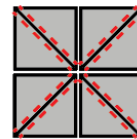


DIAGRAM 7

- Cut the squares diagonally corner to corner.
- Trim excess fabric. Your eight (8) HST should measure 6½".

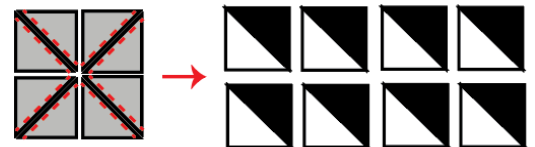


DIAGRAM 8

- Create a total of forty eight (48) **AO** hst's.

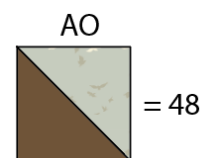


DIAGRAM 9

- Take the 6½" squares from fabric **A** and the assembled pieces and follow the diagram below for each row assembly.

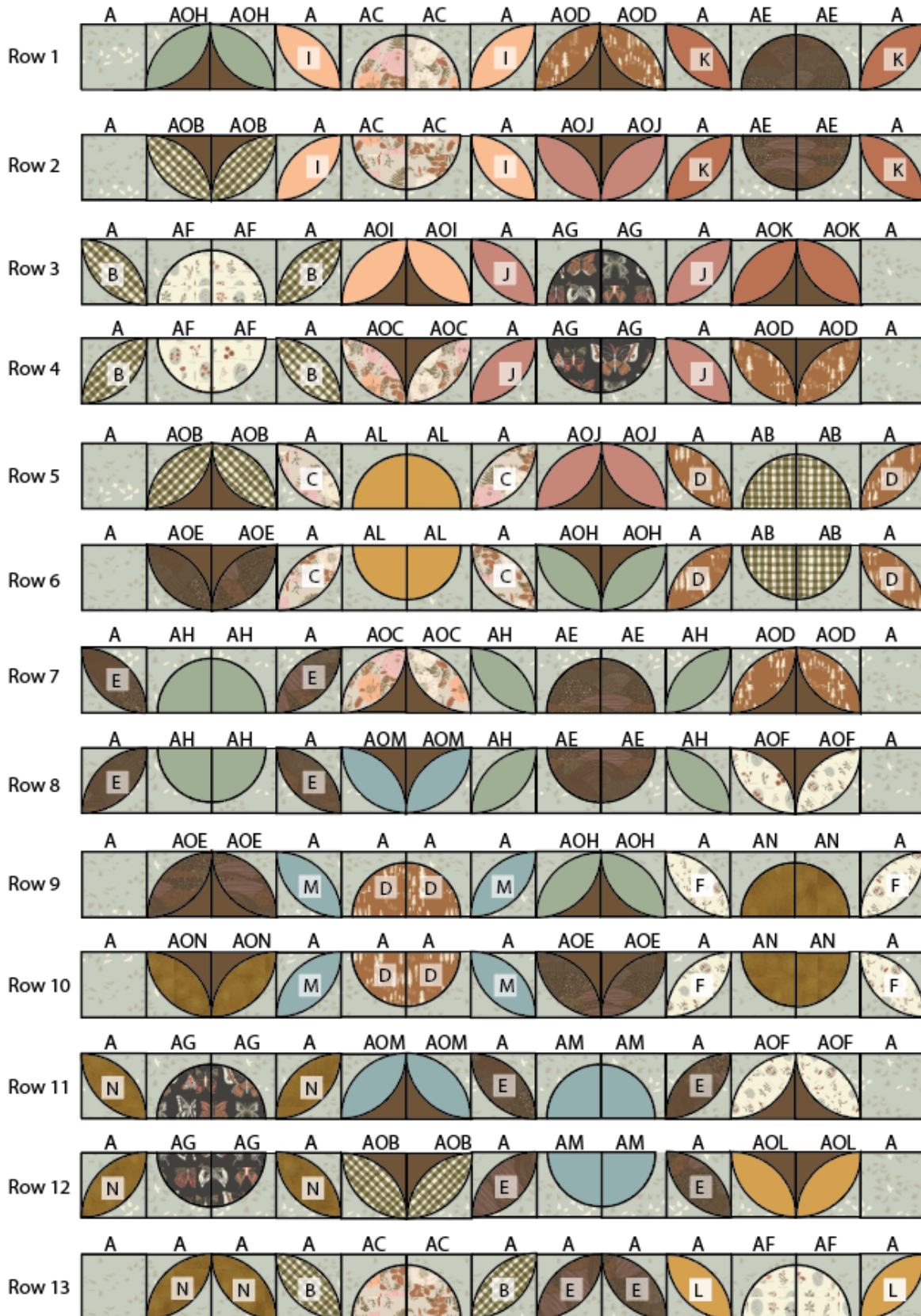


DIAGRAM 13

- Sew rows 1-13.

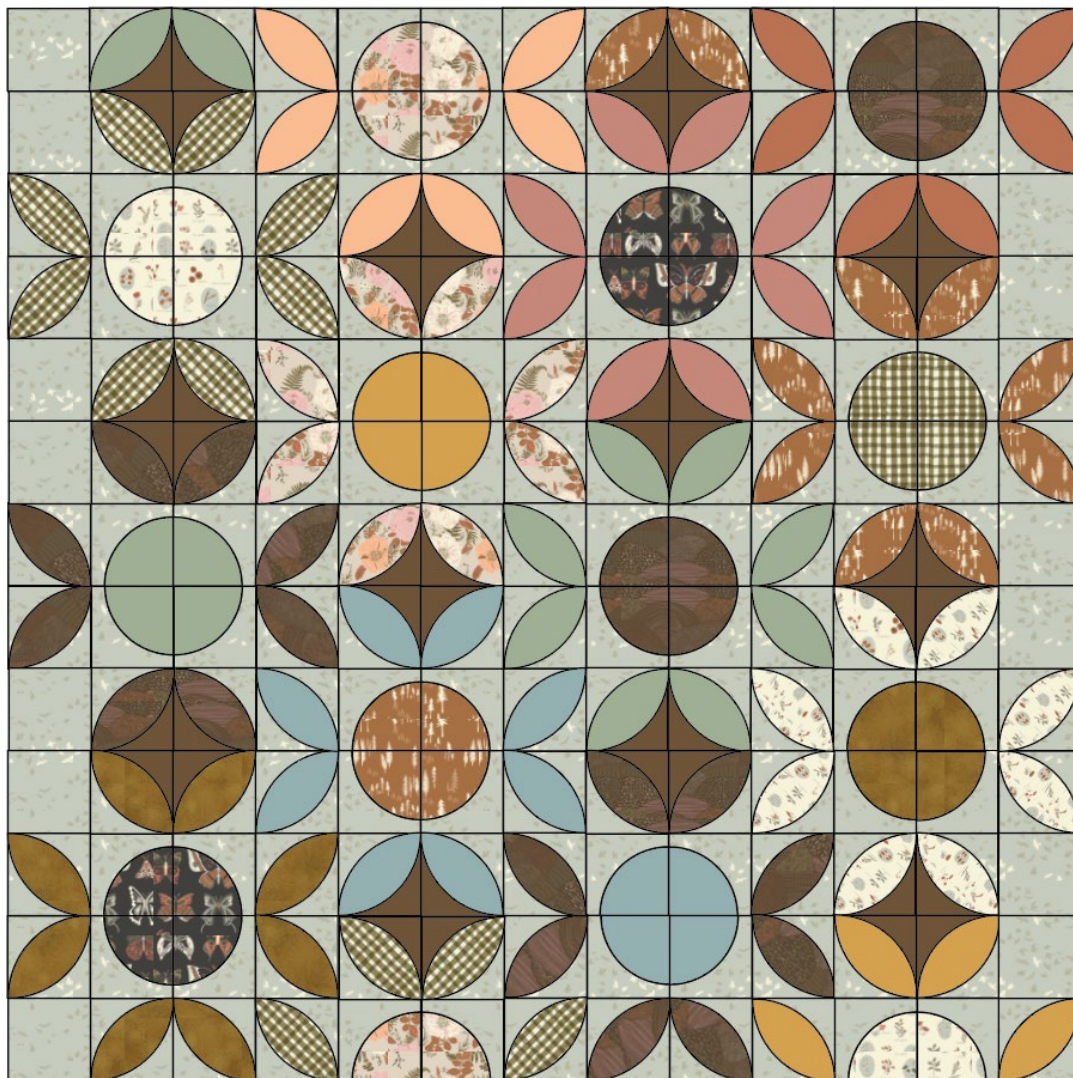


DIAGRAM 14

QUILT ASSEMBLY

Sew rights sides together.

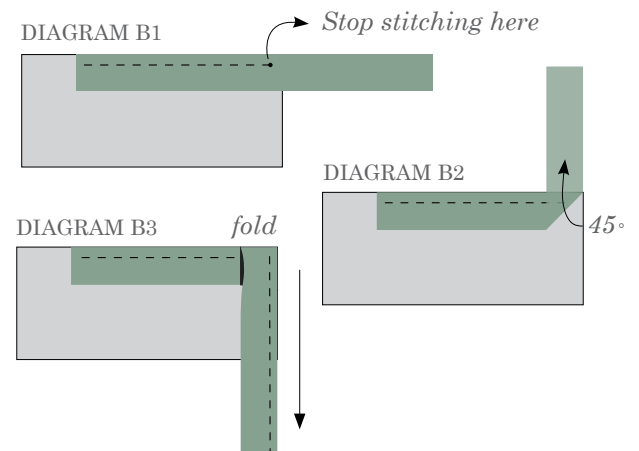
- Place BACKING FABRIC on a large surface wrong side up. Stretch it with masking tape against that surface.
- Place BATTING on top of backing fabric.
- Place TOP on top of the batting with right side facing up. Smooth away wrinkles using your hands.
- Pin all layers together and baste with basting thread, using long stitches. You can also use safety pins to join the layers.
- Machine or hand quilt starting at the center and working towards the corners. Remember that quilting motifs are a matter of personal preference. Have fun choosing yours!
- After you finished, trim excess of any fabric or batting, squaring the quilt to proceed to bind it.

- Stop stitching before you reach the last 5 or 6 inches. Cut the threads and remove the quilt from under the machine presser foot. Lay the loose ends of the binding flat along the quilt edge, folding the ends back on themselves where they meet. Press them together to form a crease. Using this crease as the stitching line, sew the two open ends of the binding with right sides together (you can help yourself marking with a pencil if the crease is difficult to see).
- Trim seam to $\frac{1}{4}$ " and press open. Complete the sewing. Turn binding to back of the quilt, turn raw edge inside and stitch by hand using blind stitch.

BINDING

Sew rights sides together.

- Cut enough strips $1\frac{1}{2}$ " wide by the width of the fabric **H** to make a final strip 326" long. Start sewing the binding strip in the middle of one of the sides of the quilt, placing the strip right side down and leaving an approximated 5" tail. Sew with $\frac{1}{4}$ " seam allowance (using straight stitch), aligning the strip's raw edge with the quilt top's raw edge.
- Stop stitching $\frac{1}{4}$ " before the edge of the quilt (DIAGRAM B 1). Clip the threads. Remove the quilt from under the machine presser foot. Fold the strip in a motion of 45° and upward, pressing with your fingers (DIAGRAM B2). Hold this fold with your finger, bring the strip down in line with the next edge, making a horizontal fold that aligns with the top edge of the quilt (DIAGRAM B3). Start sewing at $\frac{1}{4}$ " of the border, stitching all the layers. Do the same in the four corners of the quilt.



XXXXXXXXXXXXXXXXXXXXXXXXXXXXXXXXXXXX

*Congratulations
& enjoy*

XXXXXXXXXXXXXXXXXXXXXXXXXXXXXXXXXXXX

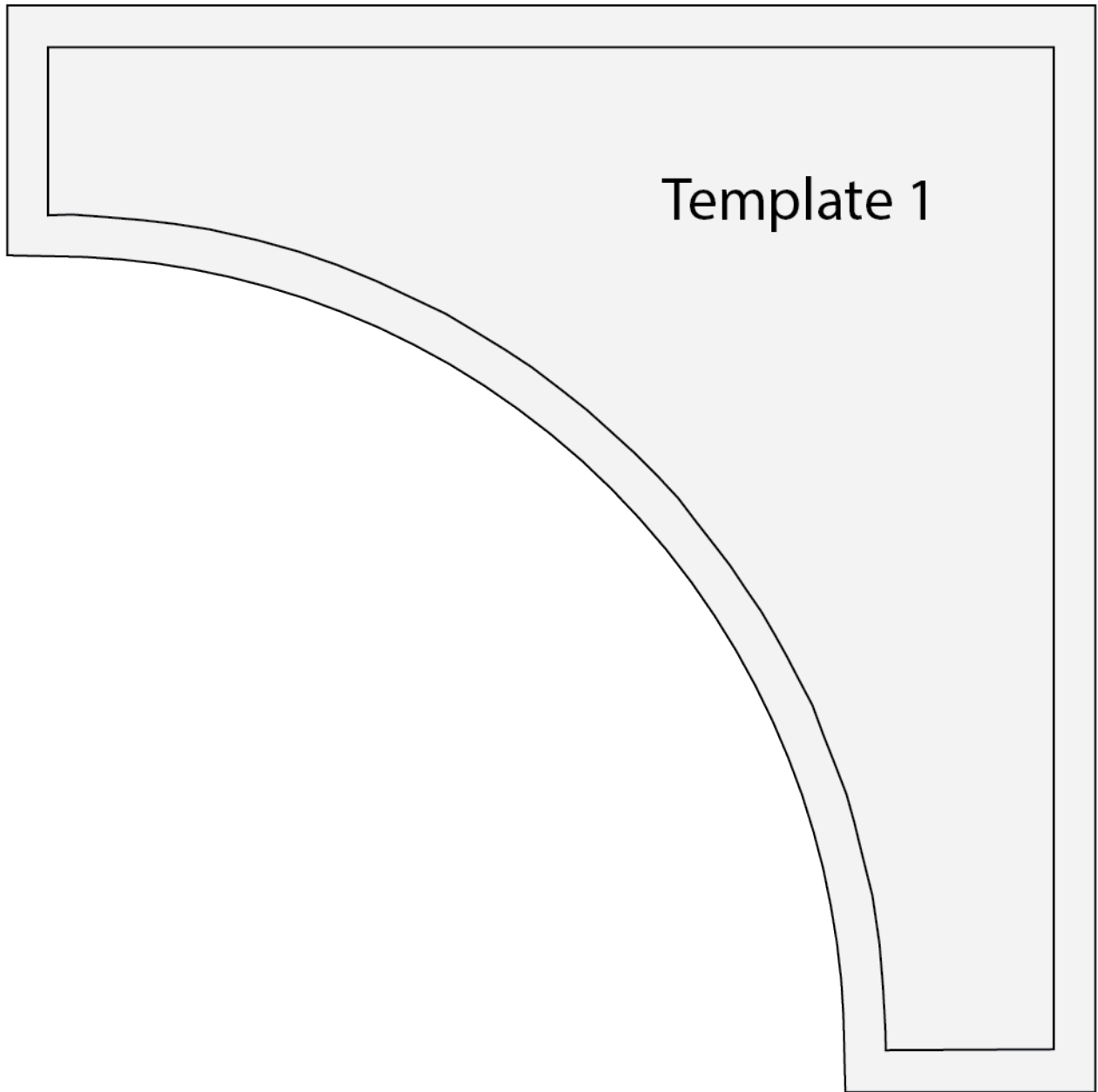
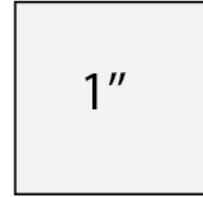


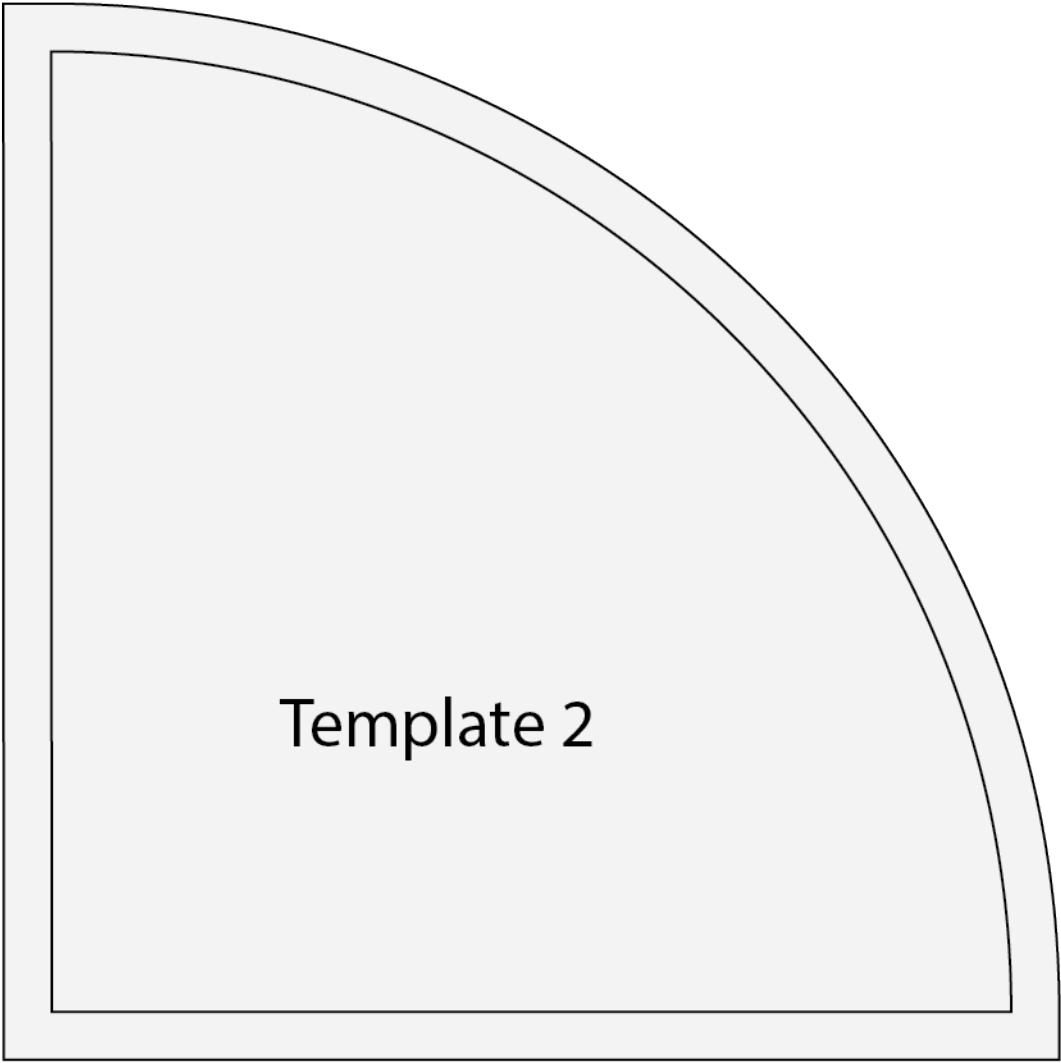
artgalleryfabrics.com

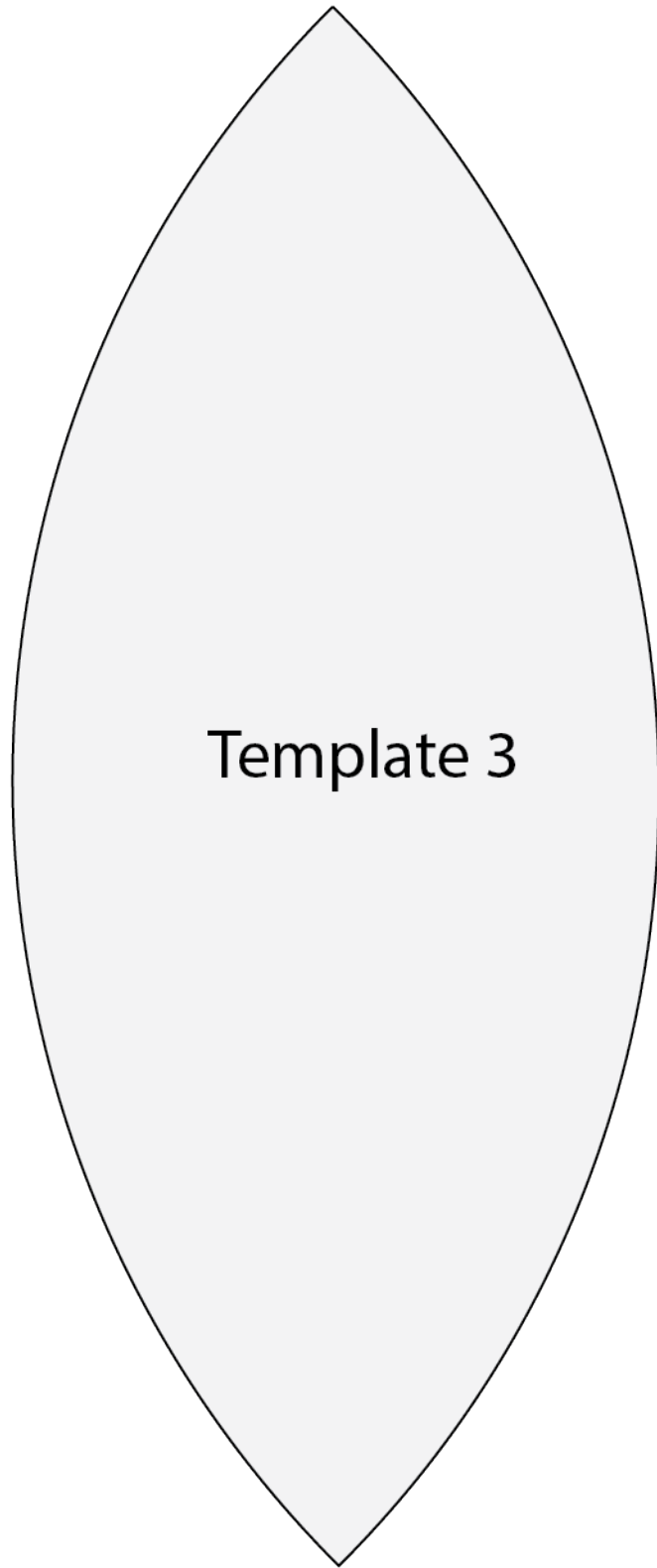
NOTE: While all possible care has been taken to ensure the accuracy of this pattern, We are not responsible for printing errors or the way in which individual work varies.

Please read instructions carefully before starting the construction of this quilt. If desired, wash and iron your fabrics before starting to cut.

© 2022 Courtesy of Art Gallery Quilts LLC. All Rights Reserved.







Template 3