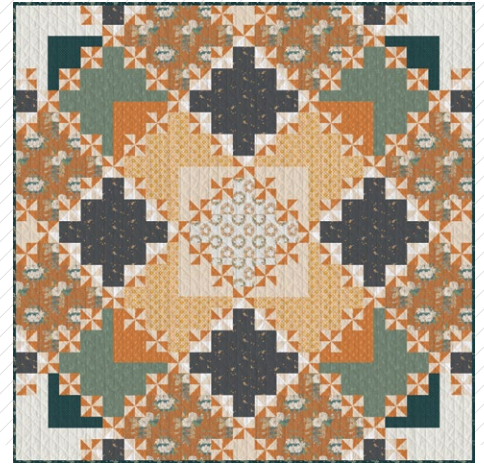


This image displays a highly detailed and intricate quilt, likely a traditional American quilt. The design is centered around a square block with a repeating floral motif in shades of cream and brown. This central block is surrounded by a wide border composed of various geometric patterns, including large squares, triangles, and smaller floral motifs. The color palette is rich and varied, featuring deep blues, vibrant oranges, earthy greens, and creamy whites. The quilt's construction is evident from the visible stitching and the way the different fabric pieces are pieced together to create a complex, symmetrical design. The overall effect is one of a well-crafted, artistic textile piece.

HUMMING Windmills

QUILT DESIGNED BY AGFstudio

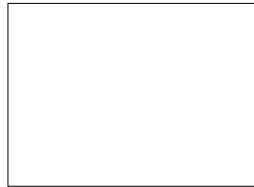


Juniper

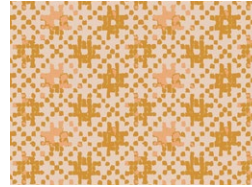
FABRICS DESIGNED BY SHARON HOLLAND



Fabric A
JUN22104
WELCOME HOME



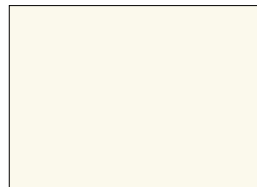
Fabric B
PE433
SNOW



Fabric C
JUN22102
NORDIC KNIT



Fabric D
JUN22100
AMBROSIAL BURLAP



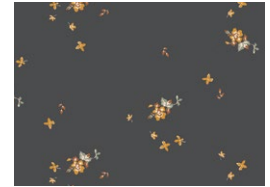
Fabric E
PE408
WHITE LINEN



Fabric F
PE523
LATTE



Fabric G
JUN22111
PINE HILL



Fabric H
JUN22115
DELICATE BALANCE COAL



Fabric I
JUN22101
WISHING FLOWERS



Fabric J
JUN22114
PRETTY PAPER TEAL



Fabric K
JUN22113
HERBAGE VIRIDIAN





FINISHED SIZE | 84" x 84"

FABRIC REQUIREMENTS

Fabric A	JUN22104	$\frac{3}{8}$ yd.
Fabric B	PE433	$\frac{5}{8}$ yd.
Fabric C	JUN22102	$\frac{7}{8}$ yd.
Fabric D	JUN22100	$1\frac{1}{2}$ yd.
Fabric E	PE408	$\frac{3}{4}$ yd.
Fabric F	PE523	2 yd.
Fabric G	JUN22111	$\frac{5}{8}$ yd.
Fabric H	JUN22115	1 yd.
Fabric I	JUN22101	$1\frac{3}{4}$ yd.
Fabric J	JUN22114	$\frac{3}{8}$ yd.
Fabric K	JUN22113	$\frac{5}{8}$ yd.

BACKING FABRIC

JUN22108 9 yds (*Suggested*)

BINDING FABRIC

Fabric **K** JUN22113 (*Included*)

CUTTING DIRECTIONS

$\frac{1}{4}$ " seam allowances are included.
WOF means width of fabric.

- One (1) $12\frac{1}{2}$ " square from fabric **A**.
- Four (4) $4\frac{1}{2}$ " squares from fabric **A**.
- Fifteen (15) 6" squares from fabric **B**.
- One (1) WOF x $2\frac{1}{2}$ " strip from fabric **C**.
- Four (4) $12\frac{1}{2}$ " x $6\frac{1}{2}$ " rectangle from fabric **C**.
- Four (4) $6\frac{1}{2}$ " squares from fabric **C**.
- Eight (8) $4\frac{1}{2}$ " squares from fabric **C**.
- Eight (8) $12\frac{1}{2}$ " squares from fabric **D**.
- Twenty four (24) $4\frac{1}{2}$ " squares from fabric **D**.
- Four (4) $12\frac{1}{2}$ " x $6\frac{1}{2}$ " rectangles from fabric **E**.
- Four (4) $6\frac{1}{2}$ " squares from fabric **E**.
- One (1) WOF x $2\frac{1}{2}$ " strip from fabric **E**.
- One (1) WOF x $2\frac{1}{2}$ " strip from fabric **F**.
- Sixty (60) 6" squares from fabric **F**.
- Four (4) $4\frac{1}{2}$ " squares from fabric **F**.
- Four (4) $6\frac{1}{2}$ " squares from fabric **F**.
- Four (4) $12\frac{1}{2}$ " x $6\frac{1}{2}$ " rectangles from fabric **G**.
- Four (4) $6\frac{1}{2}$ " squares from fabric **G**.
- One (1) WOF x $2\frac{1}{2}$ " strip from fabric **G**.
- Eight (8) $4\frac{1}{2}$ " squares from fabric **G**.
- Four (4) $12\frac{1}{2}$ " squares from fabric **H**.
- Twenty four (24) $4\frac{1}{2}$ " squares from fabric **H**.
- One (1) WOF x $2\frac{1}{2}$ " strip from fabric **I**.
- Forty five (45) 6" squares from fabric **I**.
- Four (4) $6\frac{1}{2}$ " squares from fabric **I**.
- One (1) WOF x $2\frac{1}{2}$ " strip from fabric **J**.
- Four (4) $6\frac{1}{2}$ " squares from fabric **J**.

CONSTRUCTION

Sew all rights sides together with ¼" seam allowance.

Magic 8 method:

- Star by placing one (1) 6" square from fabric **B** and **F** right sides facing together.
- Mark a diagonal line across both diagonals on the wrong side of the top fabric square (Fig. 1)
- Sew a SCANT $\frac{1}{4}$ " seam on each side of each diagonal line and press the sewn square to set the seams (Fig. 2)
- To separate the square into eight units you will be making four cuts: one vertical, one horizontal, and two diagonal. (Fig. 2)
- As you make the cuts, don't rotate the fabric or your pieces may shift position. Instead, rotate the mat or walk around it.
- Open the blocks outward and lightly press. Be very careful to only press up and down, NOT back and forth so as to not stretch them. Your seam should be pressed (both layers) toward the darker color.
- Trim each HST to a $2\frac{1}{2}$ square.

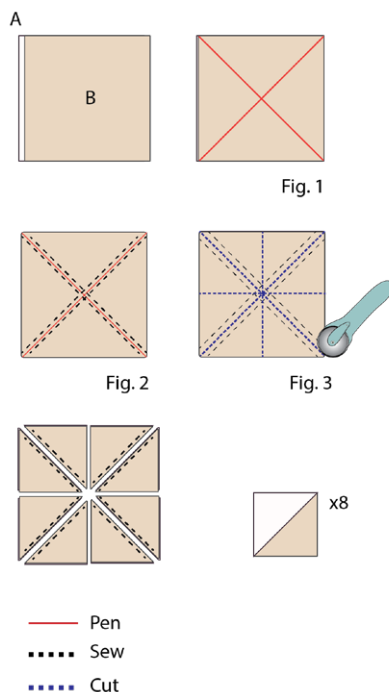


DIAGRAM 1

- Repeat the Magic 8 technique with fourteen 6" squares from fabrics **B** and **F**.
- You should end up with one hundred and twenty (120) **BF** half square triangles (HST)
- Trim each hst to $2\frac{1}{2}$ ".

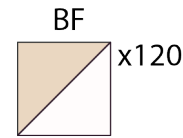


DIAGRAM 2

- Repeat the Magic 8 technique with forty five (45) 6" squares from fabrics **I** and **F**.
- You should end up with one three hundred and sixty (360) **IF** half square triangles (HST)
- Trim each hst to $2\frac{1}{2}$ ".

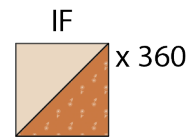


DIAGRAM 3

Block 1:

- Join four (4) **IF** half square triangle combination, pay attention to the direction of each half square triangle (HST). Make a total of forty eight (48) block 1.
- See diagram below for reference.

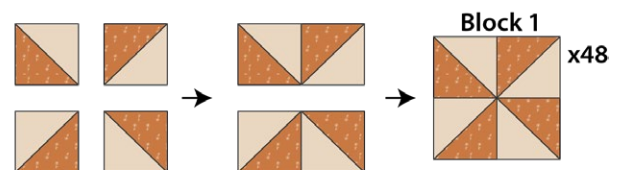


DIAGRAM 4

Block 2:

- Join three (3) **IF** and one (1) **BF** half square triangle combination, pay attention to the direction of each half square triangle (HST). Make a total of twenty four (24) block 2.
- See diagram below for reference.

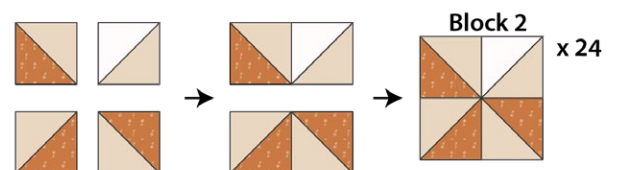


DIAGRAM 5

Block 3:

- Join two (2) **BF** and two (2) **IF** half square triangle (HST) combination pay attention to the direction of each half square triangle (HST). Make a total of forty eight (48) block 3.
- See diagram below for reference.

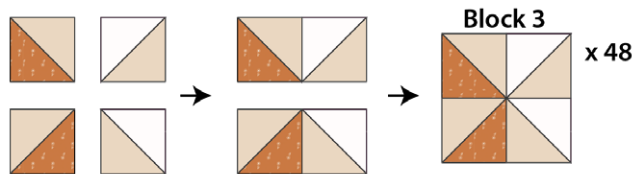


DIAGRAM 6

Block 4, block 5, and block 6:

- For these three blocks we will be working with strip sets.
- Strip Set 1(SS1): Join one (1) WOF x 2½" strip from fabrics **C** and **F**
- Strip Set 2(SS2): Join one (1) WOF x 2½" strip from fabrics **E** and **J**
- Strip Set 3(SS3): Join one (1) WOF x 2½" strip from fabrics **G** and **I**
- Subcut eight (8) 4½" vertical strips from each strip set.

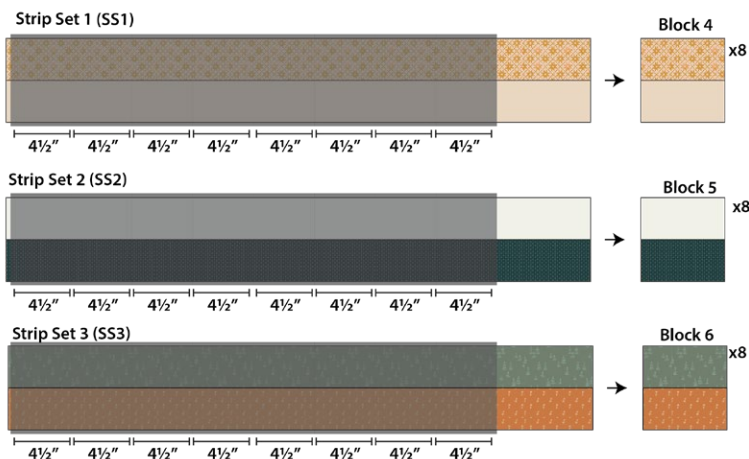


DIAGRAM 7

Block 7:

- Take two (2) blocks 3 and 1, one (1) block 2 and 5, and one (1) 4½" square from fabrics **D**, **G**, and **H**.
- For the arrangement and assembly of block 7 follow the diagram below.
- Make a total of four (4) block 7.

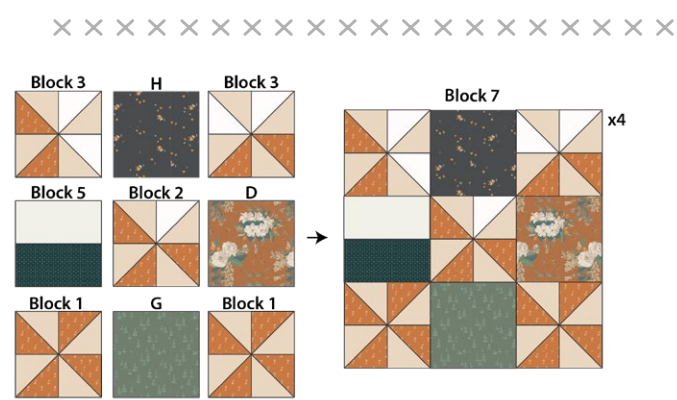


DIAGRAM 8

Block 8:

- Take two (2) blocks 3 and 1, one (1) block 2, one (1) 4½" square from fabric **H** and two 4½" squares from fabric **D** and **F**.
- For the arrangement and assembly of block 8 follow the diagram below.
- Make a total of four (4) block 8

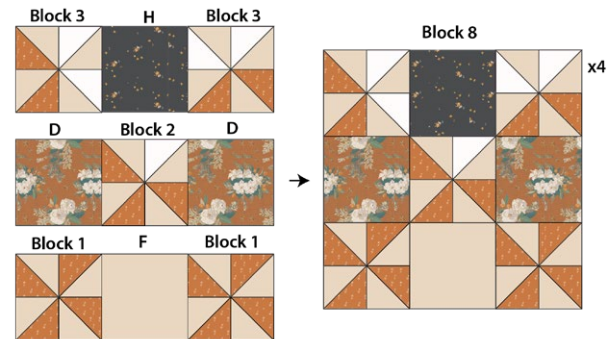


DIAGRAM 9

Block 9:

- Take two (2) blocks 3 and 1, one (1) block 2 and 5, and one (1) 4½" square from fabrics **D**, **G**, and **H**.
- For the arrangement and assembly of block 9 follow the diagram below.
- Make a total of four (4) block 9.

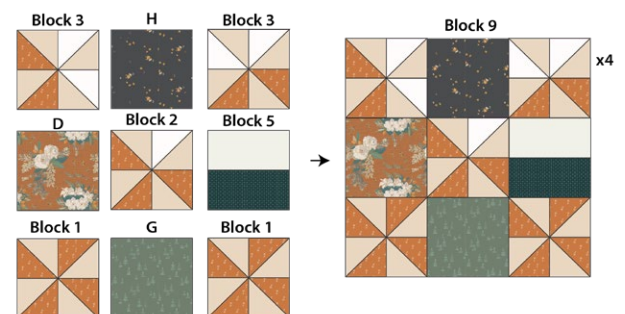


DIAGRAM 10

XX

- Make a total of four (4) block 10.



- Make a total of four (4) block 11.



- Make a total of four (4) block 10.



→

- For fabric placement and attachment follow diagram 13:



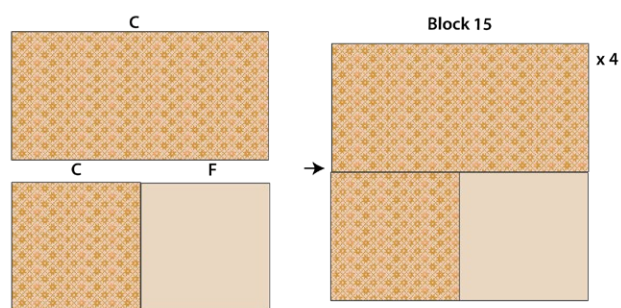
- For fabric placement and attachment follow diagram 14:



XXXXXXXXXXXXXXXXXXXXXXXXXXXX

- Block 16:**

-
- Figure 1 displays a 3x16 grid of quilt blocks, labeled "Block 16" at the top center. The grid is organized into three rows, labeled "Row 1", "Row 2", and "Row 3" on the left. The column index "x2" is indicated on the right. The blocks feature various patterns including floral, geometric, and solid colors in shades of brown, green, and cream.



- Take one (1) 12½" square from fabric **A**, eight (8) 12½" squares from fabric **D**, four (4) 12½" squares from fabric **H** and all the g - 17 blocks.
- Joint them into the following rows. you will make two (2) row 1, two (2) row 2, two (2) row 3, and one (1) row 4.

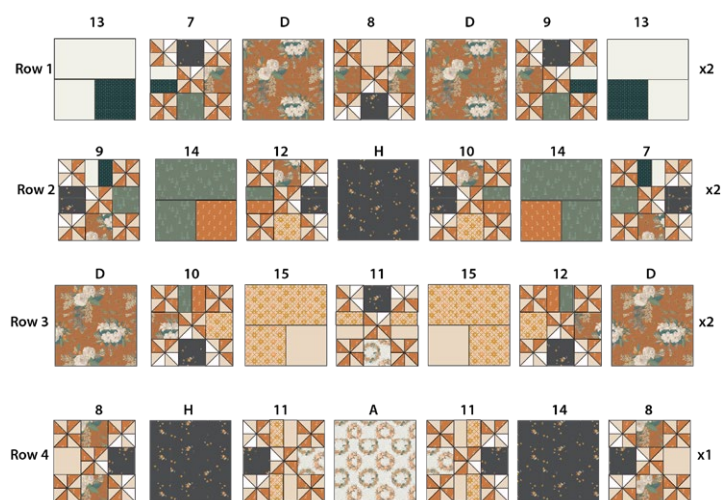
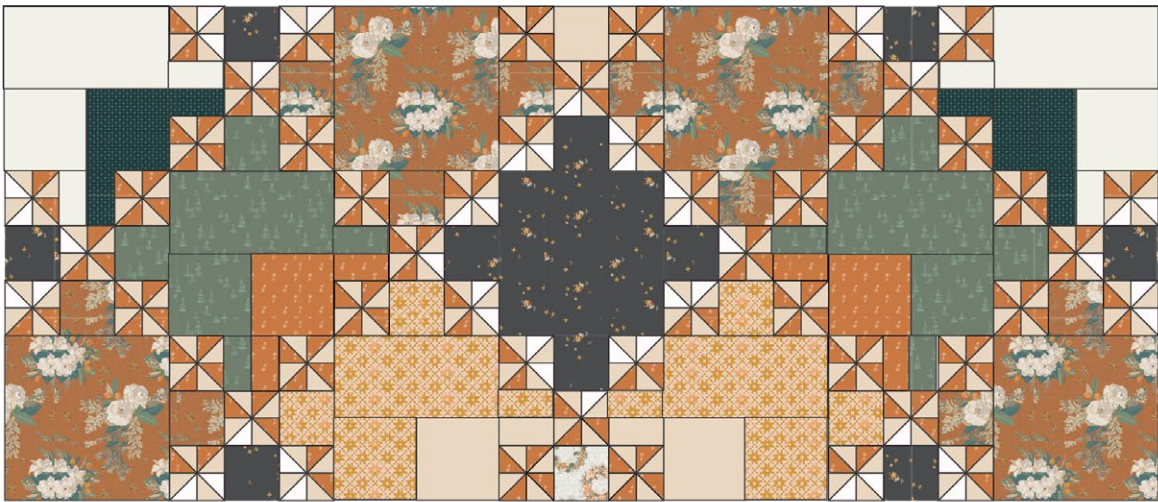


DIAGRAM 17

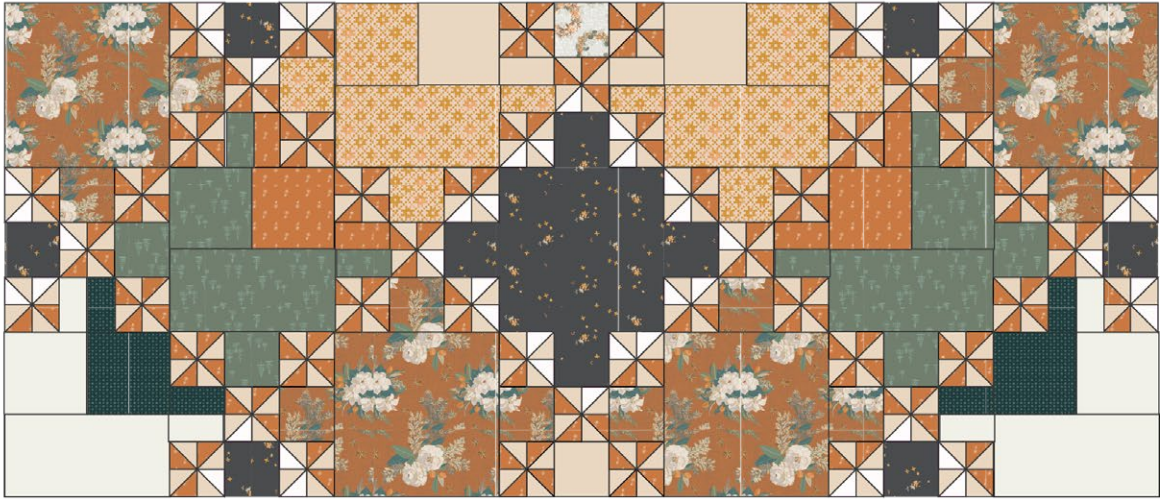
Block 16



Row 4



Block 16
Upside Down



QUILT ASSEMBLY

Sew rights sides together.

- Place BACKING FABRIC on a large surface wrong side up. Stretch it with masking tape against that surface.
- Place BATTING on top of backing fabric.
- Place TOP on top of the batting with right side facing up. Smooth away wrinkles using your hands.
- Pin all layers together and baste with basting thread, using long stitches. You can also use safety pins to join the layers.
- Machine or hand quilt starting at the center and working towards the corners. Remember that quilting motifs are a matter of personal preference. Have fun choosing yours!
- After you finished, trim excess of any fabric or batting, squaring the quilt to proceed to bind it.

- Stop stitching before you reach the last 5 or 6 inches. Cut the threads and remove the quilt from under the machine presser foot. Lay the loose ends of the binding flat along the quilt edge, folding the ends back on themselves where they meet. Press them together to form a crease. Using this crease as the stitching line, sew the two open ends of the binding with right sides together (you can help yourself marking with a pencil if the crease is difficult to see).
- Trim seam to ¼" and press open. Complete the sewing. Turn binding to back of the quilt, turn raw edge inside and stitch by hand using blind stitch.

BINDING

Sew rights sides together.

- Cut enough strips 1½" wide by the width of the fabric **L** to make a final strip 194" long. Start sewing the binding strip in the middle of one of the sides of the quilt, placing the strip right side down and leaving an approximated 5" tail. Sew with ¼" seam allowance (using straight stitch), aligning the strip's raw edge with the quilt top's raw edge.
- Stop stitching ¼" before the edge of the quilt (DIAGRAM B 1). Clip the threads. Remove the quilt from under the machine presser foot. Fold the strip in a motion of 45° and upward, pressing with your fingers (DIAGRAM B2). Hold this fold with your finger, bring the strip down in line with the next edge, making a horizontal fold that aligns with the top edge of the quilt (DIAGRAM B3). Start sewing at ¼" of the border, stitching all the layers. Do the same in the four corners of the quilt.

XXXXXXXXXXXXXXXXXXXXXXXXXXXXXXXXXXXX

*Congratulations
& enjoy*

XXXXXXXXXXXXXXXXXXXXXXXXXXXXXXXXXXXX



artgalleryfabrics.com

NOTE: While all possible care has been taken to ensure the accuracy of this pattern, We are not responsible for printing errors or the way in which individual work varies.

Please read instructions carefully before starting the construction of this quilt. If desired, wash and iron your fabrics before starting to cut.

© 2023 Courtesy of Art Gallery Quilts LLC. All Rights Reserved.