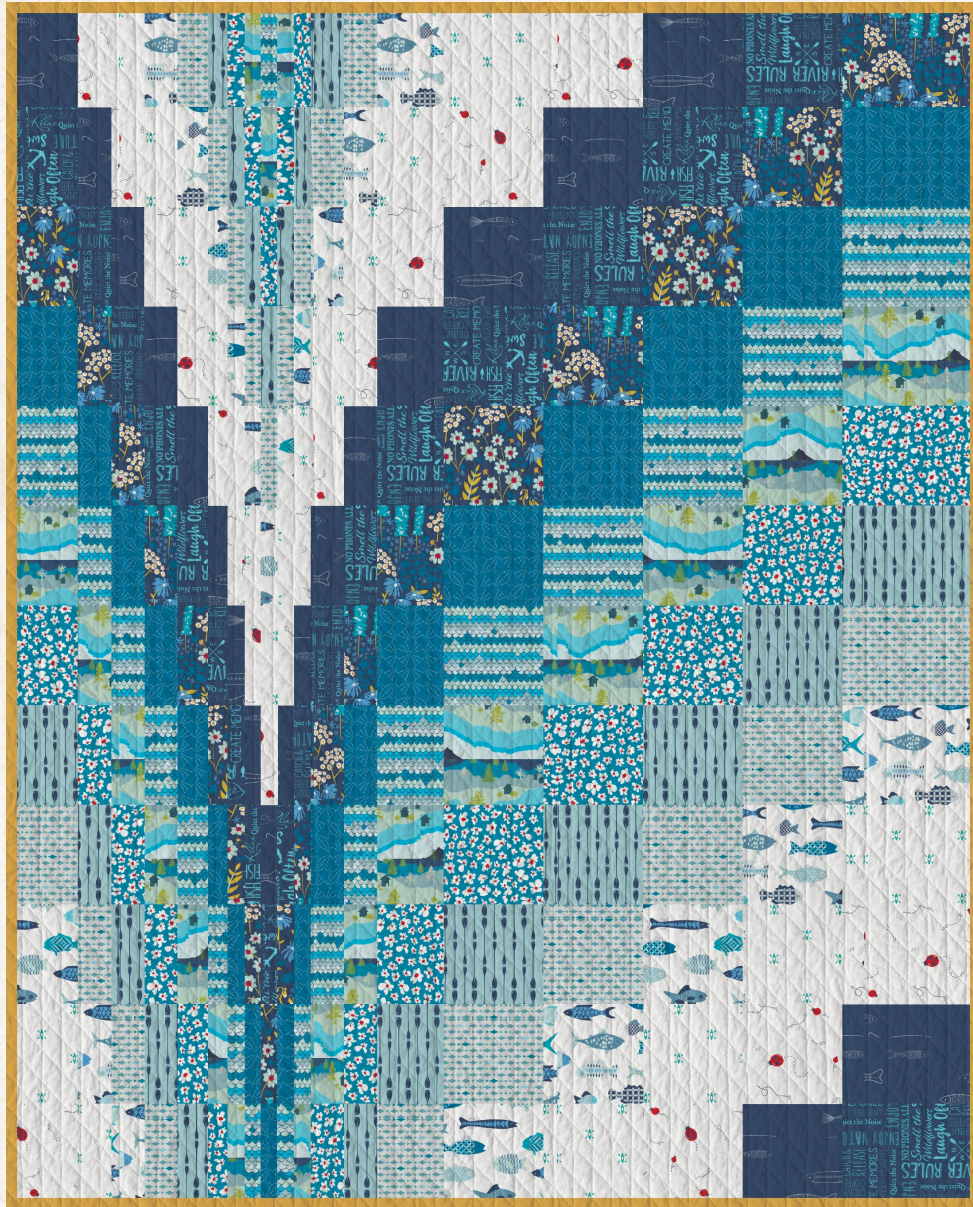




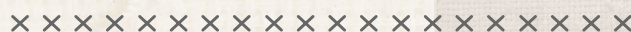
MAKING *Waves*



ANGLES

A DIVISION OF AGF

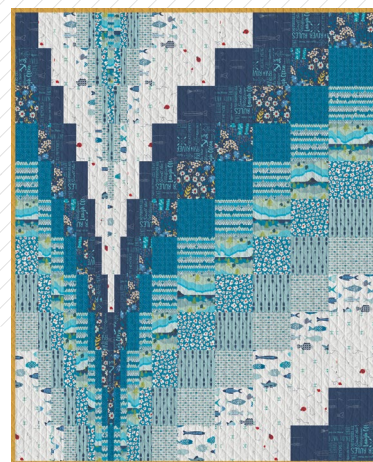
FREE PATTERN



MAKING Waves

QUILT DESIGNED BY MATHEW BOURDREAUX

CATCH & RELEASE



COLOR OPTION

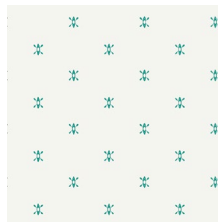
FABRICS DESIGNED BY MATHEW BOURDREAUX



CTR-24904
CATCH & RELEASE



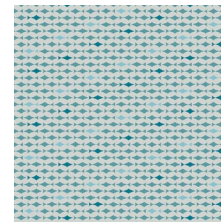
CTR-24909
GOODLUCK TRAILS



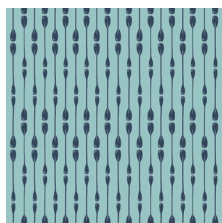
CTR-24907
ROWING



CTR-24900
SCHOOL OF FISH



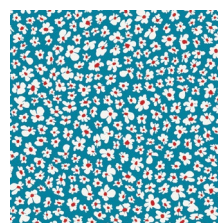
CTR-24903
RIDE THE CURRENT



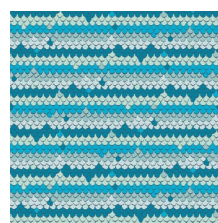
CTR-24908
PADDLE ROWS



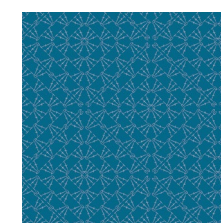
CTR-24911
MOUNTAIN SPACE



CTR-24905
FLOWER STREAM



CTR-24906
REFLECTORS



CTR-24901
CROCHETING THE NET



CTR-24902
BLUE BANK FLORA



CTR-24910
RIVER RULES



FEEL THE DIFFERENCE © 2020 Courtesy of Art Gallery Quilts LLC. All Rights Reserved.

XX

ADDITIONAL BLENDERS FOR THIS PROJECT

PE-421
HONEY

MAKING Waves

FINISHED SIZE | 77½" x 102"

FABRIC REQUIREMENTS

Fabric A	CTR-24904	½ yd.
Fabric B	CTR-24909	½ yd.
Fabric C	CTR-24907	½ yd.
Fabric D	CTR-24900	½ yd.
Fabric E	CTR-24903	½ yd.
Fabric F	CTR-24908	½ yd.
Fabric G	CTR-24905	½ yd.
Fabric H	CTR-24911	½ yd.
Fabric I	CTR-24906	½ yd.
Fabric J	CTR-24901	½ yd.
Fabric K	CTR-24902	½ yd.
Fabric L	CTR-24910	½ yd.
Fabric M	PE-421	½ yd.

BACKING FABRIC

CTR-24904 8 ¼ yds. (*Suggested*)

BINDING FABRIC

Fabric **M** PE-421 (*Included*)

CUTTING INSTRUCTIONS

- Two (2) 9" x WOF (including the selvage) strip from fabrics **A, B, C, D, E, F, G, H, I, J, K, L**.

CONSTRUCTION

Sew all rights sides together with ¼" seam allowance.

- Pair fabrics **A** through **L**, following the diagram below for each order.
- Repeat the same process for the remaining strips.

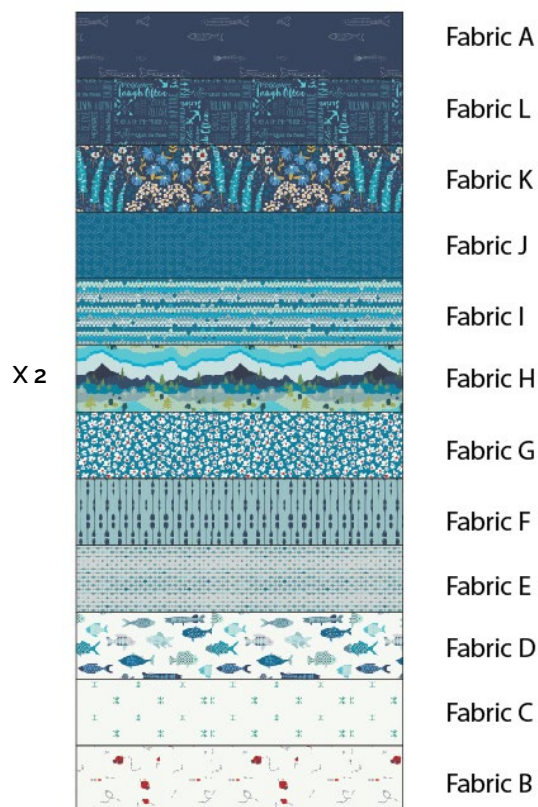


DIAGRAM 1

- Sew the first and last fabrics together creating a continuous loop of fabric.
- Press all your seams open.
- Repeat the same for the other assembled unit.
- To begin the process for the first fabric tube, flatten it and carefully fold the bottom of the tube onto the top of the tube.
- Pin your fabric before cutting.
- Because we are using exactly the amount of the width of fabric, including the selvage, follow the diagram below of how to cut your pieces in order to be precise.

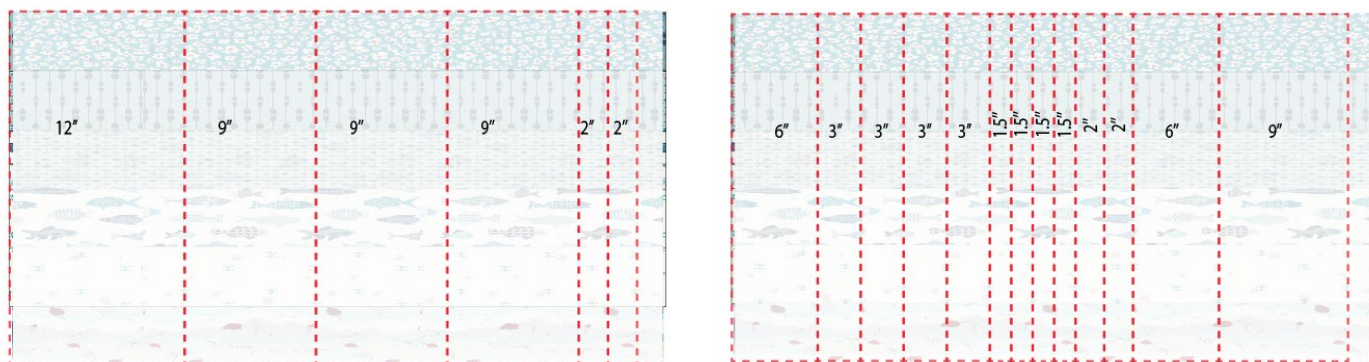


DIAGRAM 2

- Going from left to right, unsew one seam from each tube to create a long strip with the following fabrics from diagram 3, starting with column 1 with fabric **A** as your top.
- Then, sew each long strip from column 1 through column 19 to its adjacent strips making sure to match the seams. (Diagram 3)
- Press seam open.

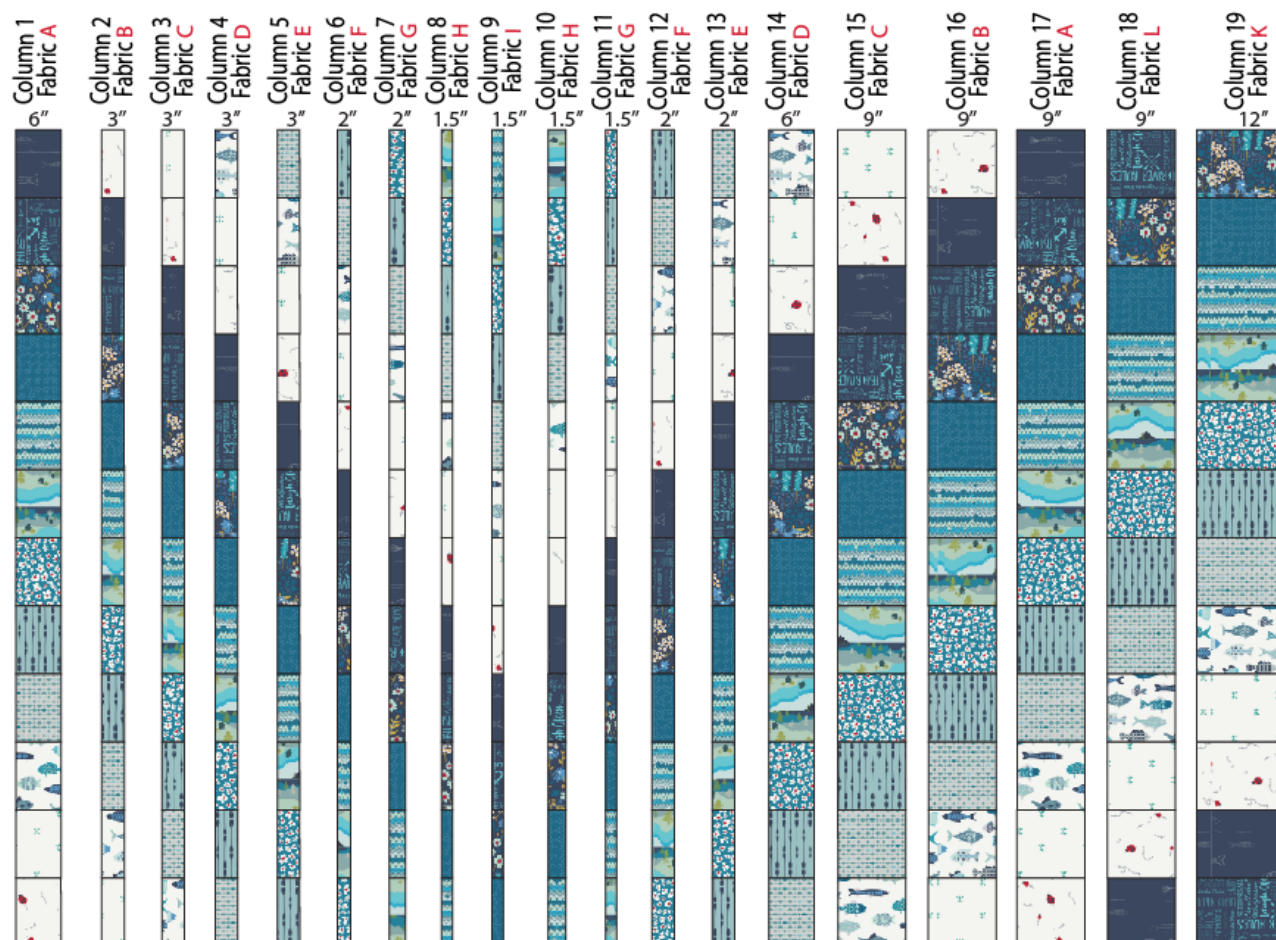


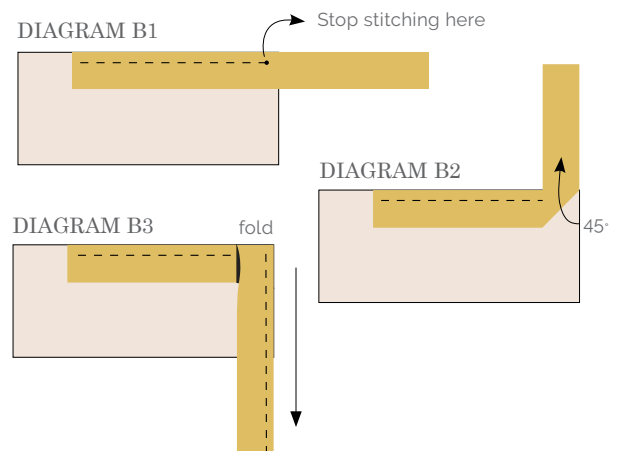
DIAGRAM 3

QUILT ASSEMBLY

Sew rights sides together

- Place BACKING FABRIC on a large surface wrong side up. Stretch it with masking tape against that surface.
- Place BATTING on top of backing fabric.
- Place TOP on top of the batting with right side facing up. Smooth away wrinkles using your hands.
- Pin all layers together and baste with basting thread, using long stitches. You can also use safety pins to join the layers.
- Machine or hand quilt starting at the center and working towards the corners. Remember that quilting motifs are a matter of personal preference. Have fun choosing yours!
- After you finished, trim excess of any fabric or batting, squaring the quilt to proceed to bind it.

- Stop stitching before you reach the last 5 or 6 inches. Cut the threads and remove the quilt from under the machine presser foot. Lay the loose ends of the binding flat along the quilt edge, folding the ends back on themselves where they meet. Press them together to form a crease. Using this crease as the stitching line, sew the two open ends of the binding with right sides together (you can help yourself marking with a pencil if the crease is difficult to see).
- Trim seam to $\frac{1}{4}$ " and press open. Complete the sewing. Turn binding to back of the quilt, turn raw edge inside and stitch by hand using blind stitch.



BINDING

Sew rights sides together.

- Cut enough strips $1\frac{1}{2}$ " wide by the width of the fabric **M** to make a final strip 400" long. Start sewing the binding strip in the middle of one of the sides of the quilt, placing the strip right side down and leaving an approximated 5" tail. Sew with $\frac{1}{4}$ " seam allowance (using straight stitch), aligning the strip's raw edge with the quilt top's raw edge.
- Stop stitching $\frac{1}{4}$ " before the edge of the quilt (DIAGRAM B 1). Clip the threads. Remove the quilt from under the machine presser foot. Fold the strip in a motion of 45° and upward, pressing with your fingers (DIAGRAM B2). Hold this fold with your finger, bring the strip down in line with the next edge, making a horizontal fold that aligns with the top edge of the quilt (DIAGRAM B3). Start sewing at $\frac{1}{4}$ " of the border, stitching all the layers. Do the same in the four corners of the quilt.

XXXXXXXXXXXXXXXXXXXXXXXXXXXXXXXXXXXX

Congratulations
& enjoy

XXXXXXXXXXXXXXXXXXXXXXXXXXXXXXXXXXXX



artgalleryfabrics.com

NOTE: While all possible care has been taken to ensure the accuracy of this pattern, We are not responsible for printing errors or the way in which individual work varies.
 Please read instructions carefully before starting the construction of this quilt. If desired, wash and iron your fabrics before starting to cut.

© 2020 Courtesy of Art Gallery Quilts LLC. All Rights Reserved.