

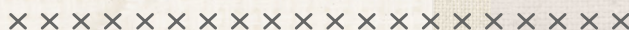
SOUTHWEST VOYAGE



ANGLES

A DIVISION OF AGF

FREE PATTERN

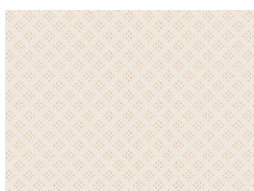


SOUTHWEST VOYAGE

QUILT DESIGNED BY *AGFstudio*

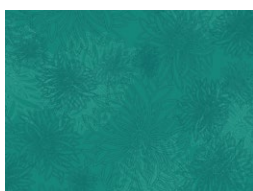
Land of ENCHANTMENT

FABRICS DESIGNED BY BECCA PLYMALE



Fabric A

LEN75701
WHITE SANDS



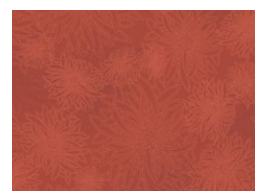
Fabric B

FE539
ESMERALDA



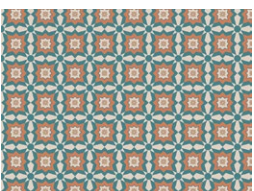
Fabric C

LEN75703
CHARMING PUEBLO



Fabric D

FE551
VICTORIAN BRICK



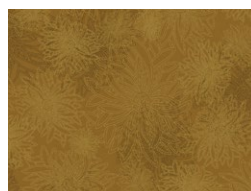
Fabric E

LEN75708
TALAVERA CHARM



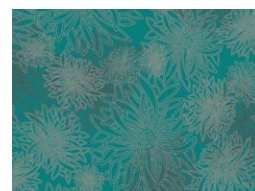
Fabric F

FE519
ICY BLUE



Fabric G

FE513
HONEY MUSTARD



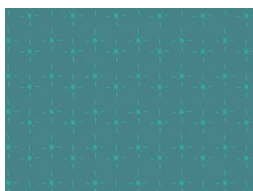
Fabric H

FE511
CAPRI BLUE



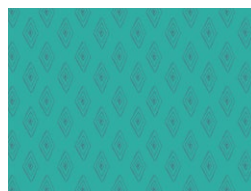
Fabric I

LEN75707
WOVEN ESSENCE



Fabric J

LEN75711
LUMINARIA TURQUOISE



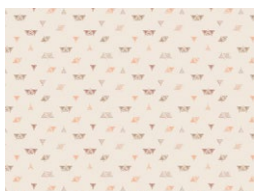
Fabric K

LEN75710
ANCIENT ECHOES



Fabric L

LEN75705
LUMINARIA ADOBE



Fabric M

LEN75702
TERRA IMPRINTS



Fabric N

LEN75706
DESERT SPROUTS



Fabric O

FE518
BALLERINA



SOUTHWEST VOYAGE

FINISHED SIZE | 96" x 108"

FABRIC REQUIREMENTS

Fabric A	LEN75701	7¾ yd.
Fabric B	FE539	¼ yd.
Fabric C	LEN75703	¼ yd.
Fabric D	FE551	1 yd.
Fabric E	LEN75708	¾ yd.
Fabric F	FE519	½ yd.
Fabric G	FE513	¾ yd.
Fabric H	FE511	¼ yd.
Fabric I	LEN75707	¼ yd.
Fabric J	LEN75711	½ yd.
Fabric K	LEN75710	¾ yd.
Fabric L	LEN75705	½ yd.
Fabric M	LEN75702	¼ yd.
Fabric N	LEN75706	1 yd.
Fabric O	FE518	¼ yd.
Fabric P	BINLEN75	¾ yd.

BACKING FABRIC
LEN75709 9¾ yds *(Suggested)*

BINDING FABRIC
Fabric **P** BINLEN75 ¾ yd. *(Included)*

CUTTING DIRECTIONS

¼" seam allowances are included.
WOF means width of fabric.

Fabric A

- Forty eight (48) 15½" x 3½" rectangles.
- Forty eight (48) 12½" x 3½" rectangles.
- Forty eight (48) 8" x 3½" rectangles.
- Ninety six (96) 2" squares.
- Thirty six (36) 7¾" squares.

Fabric B

- Twenty four (24) 3½" x 2" rectangles.

Fabric C

- Three (3) 7¾" squares.

Fabric D

- Eighteen (18) 7¾" squares.

Fabric E

- Twelve (12) 7¾" squares.

Fabric F

- Six (6) 7¾" squares.

Fabric G

- Twelve (12) 7¾" squares.

Fabric H

- Three (3) 7¾" squares.

- Six (6) 7¾" squares from fabrics **E** and **A**. You should have a total of forty eight (48) **E-A** hst.

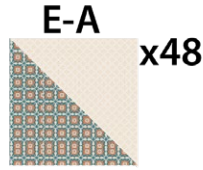


DIAGRAM 3

- Nine (9) 7¾" squares from fabrics **N** and **D**. You should have a total of seventy two (72) **N-D** hst.

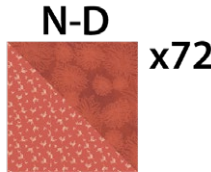


DIAGRAM 4

- Nine (9) 7¾" squares from fabrics **K** and **A**. You should have a total of seventy two (72) **K-A** hst.

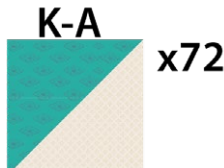


DIAGRAM 5

- Nine (9) 7¾" squares from fabrics **G** and **A**. You should have a total of seventy two (72) **G-A** hst.



DIAGRAM 6

- Nine (9) 7¾" squares from fabrics **D** and **J**. You should have a total of seventy two (72) **D-J** hst.

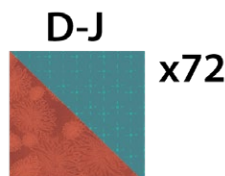


DIAGRAM 7

- Three (3) 7¾" squares from fabrics **F** and **A**. You should have a total of twenty four (24) **F-A** hst.

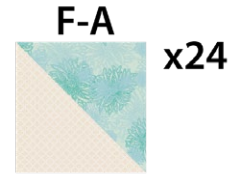


DIAGRAM 8

- Three (3) 7¾" squares from fabrics **I** and **O**. You should have a total of twenty four (24) **I-O** hst.

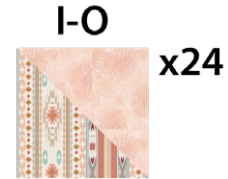


DIAGRAM 9

- Three (3) 7¾" squares from fabrics **H** and **A**. You should have a total of twenty four (24) **H-A** hst.

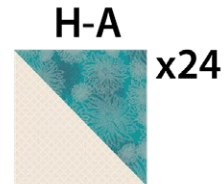


DIAGRAM 10

- Three (3) 7¾" squares from fabrics **M** and **C**. You should have a total of twenty four (24) **M-C** hst.

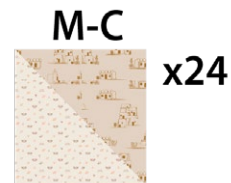


DIAGRAM 11

- Three (3) 7¾" squares from fabrics **N** and **G**. You should have a total of twenty four (24) **N-G** hst.

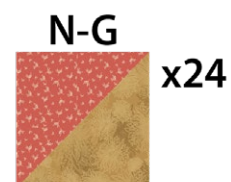


DIAGRAM 12

- Three (3) 7¾" squares from fabrics **K** and **F**. You should have a total of twenty four (24) **K-F** hst.

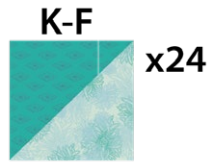


DIAGRAM 13

Flying Geese

- Place a 2" square from fabric **A** to the right edge of a 3½" x 2" rectangle from fabric **B** mark a diagonal line, from the top left corner to the bottom right corner of fabric **A** square, sew through the drawn line, trim ¼" away from the seam and press.
- Place another 2" square from fabric **A** and place it to the left edge of the sewing piece, mark a diagonal line from the top right corner to the bottom left corner of fabric **A** square sew through the line and trim ¼" away from the seam. Press.
- Repeat the same steps with twenty three (23) 3½" x 2" rectangles from fabric **B** and forty six (46) 2" squares from fabric **A** to get a total of twenty four (24) **ABA** flying geese combinations.

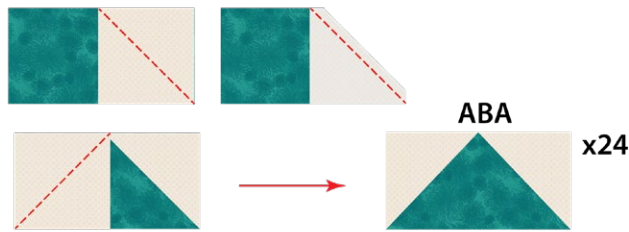


DIAGRAM 14

- Repeat the flying geese method with twenty four (24) 3½" x 2" rectangles from fabric **L** and forty eight (48) 2" squares from fabric **A** to get a total of twenty four (24) **ALA** flying geese combinations.



DIAGRAM 15



Block 1

- Arrange pieces into six (6) rows.
- For fabric placement and attachment see diagram below.

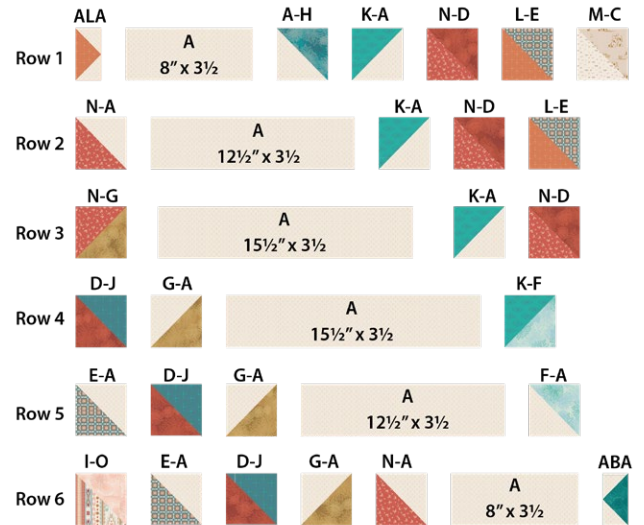


DIAGRAM 16

- Sew rows together.

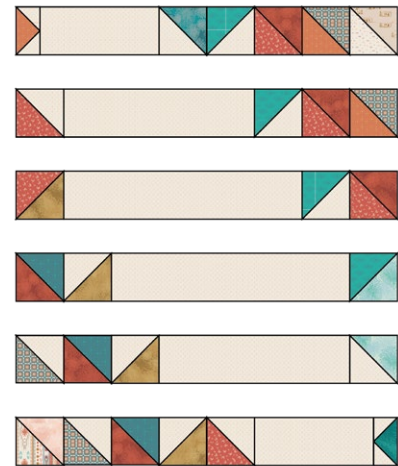


DIAGRAM 17

- Make a total of twelve (12) Block 1.

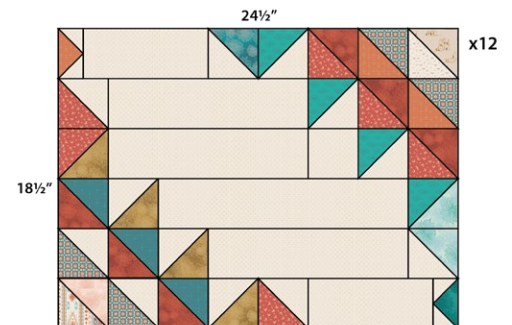


DIAGRAM 18

Block 2

- Arrange pieces into six (6) rows.
- For fabric placement and attachment see diagram below.

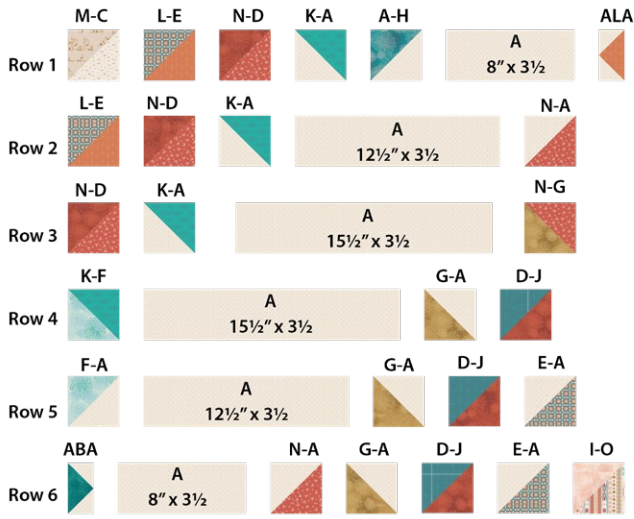


DIAGRAM 19

- Sew rows together.

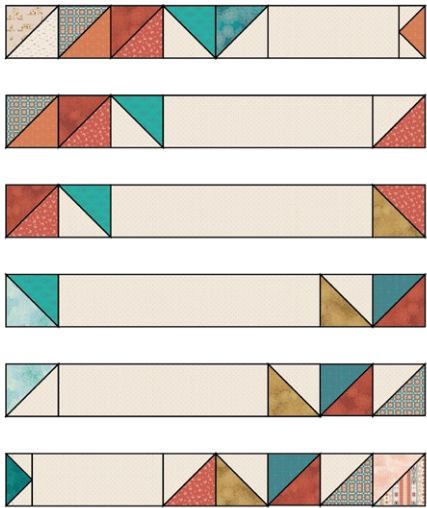
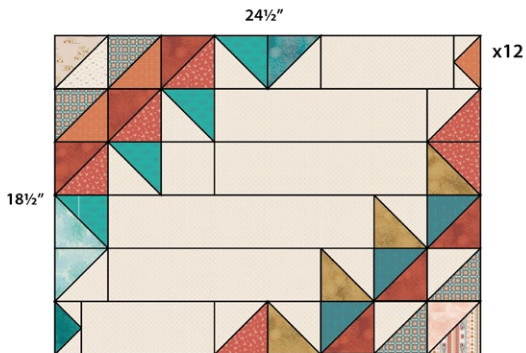


DIAGRAM 20

- Make a total of twelve (12) Block 1.



QUILT TOP



- Arrange block 1 and 2 into six (6) rows.
- For blocks order of attachment see diagram below.

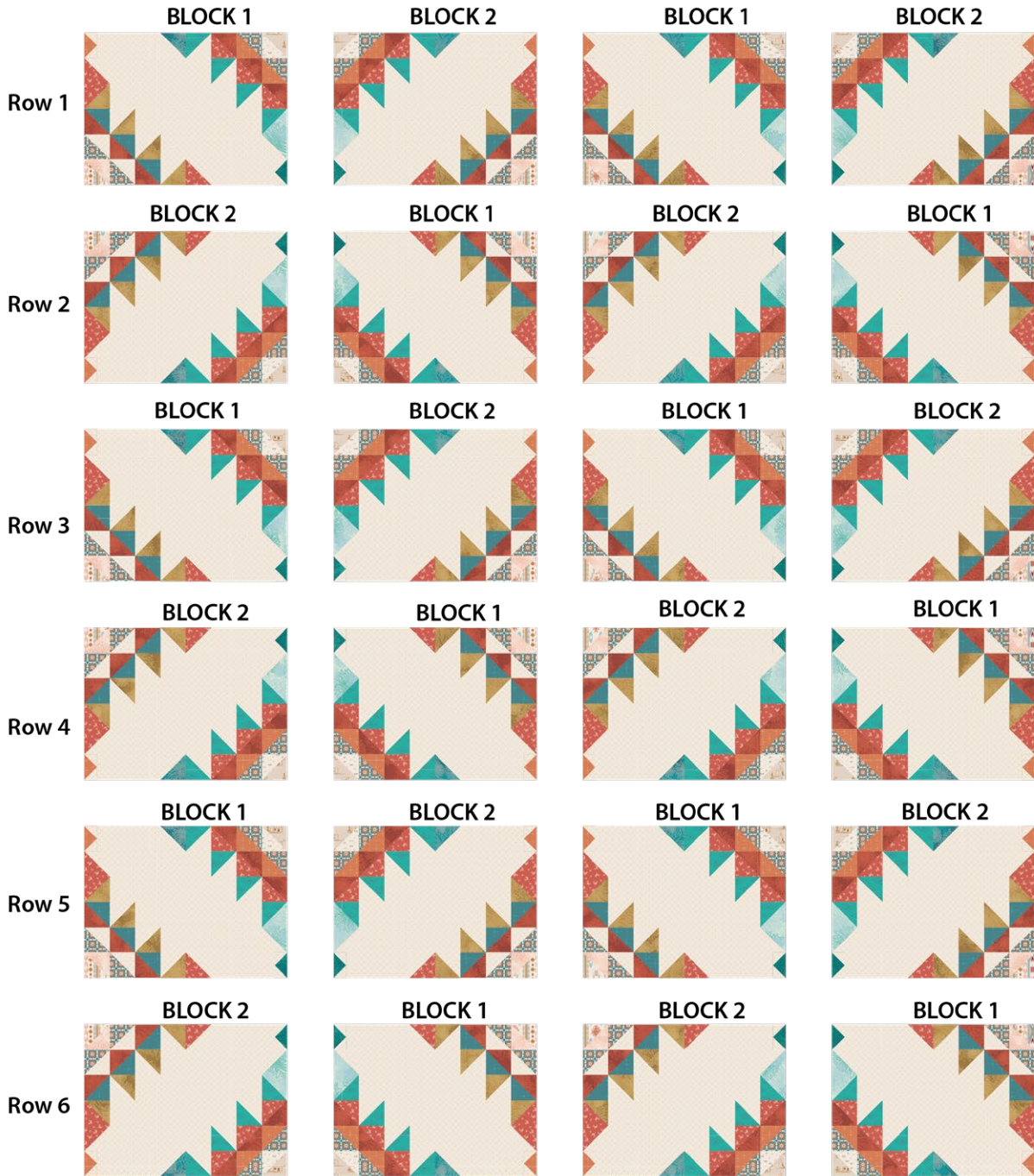


DIAGRAM 21

• Sew rows together.

Row 1



Row 2



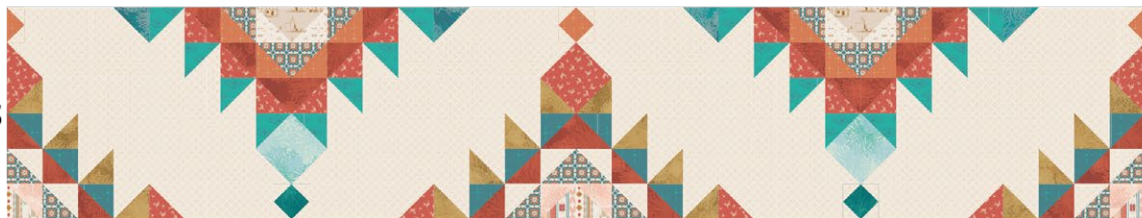
Row 3



Row 4



Row 5



Row 6





DIAGRAM 23

QUILT ASSEMBLY

Sew rights sides together.

- Place BACKING FABRIC on a large surface wrong side up. Stretch it with masking tape against that surface.
- Place BATTING on top of backing fabric.
- Place TOP on top of the batting with right side facing up. Smooth away wrinkles using your hands.
- Pin all layers together and baste with basting thread, using long stitches. You can also use safety pins to join the layers.
- Machine or hand quilt starting at the center and working towards the corners. Remember that quilting motifs are a matter of personal preference. Have fun choosing yours!
- After you finished, trim excess of any fabric or batting, squaring the quilt to proceed to bind it.

BINDING

Sew rights sides together.

Cut enough strips $2\frac{1}{2}$ " wide by the width of the fabric **P** to make a final strip 418" long. Start sewing the binding strip in the middle of one of the sides of the quilt, placing the strip right side down and leaving an approximated 5" tail. Sew with $\frac{1}{4}$ " seam allowance (using straight stitch), aligning the strip's raw edge with the quilt top's raw edge.

- Stop stitching $\frac{1}{4}$ " before the edge of the quilt (DIAGRAM B 1). Clip the threads. Remove the quilt from under the machine presser foot. Fold the strip in a motion of 45° and upward, pressing with your fingers (DIAGRAM B2). Hold this fold with your finger, bring the strip down in line with the next edge, making a horizontal fold that aligns with the top edge of the quilt (DIAGRAM B3). Start sewing at $\frac{1}{4}$ " of the border, stitching all the layers. Do the same in the four corners of the quilt.
- Stop stitching before you reach the last 5 or 6 inches. Cut the threads and remove the quilt from under the machine presser foot. Lay the loose ends of the binding flat along the quilt edge, folding the ends back on themselves where they meet. Press them together to form a crease. Using this crease as the stitching line, sew the two open ends of the binding with right sides together (you can help yourself marking with a pencil if the crease is difficult to see).
- Trim seam to $\frac{1}{4}$ " and press open. Complete the sewing. Turn binding to back of the quilt, turn raw edge inside and stitch by hand using blind stitch.
- If you are using our 2.5 Edition Binding Fabric, click or scan this QR code to see a tutorial on how to use this specialty fabric.

