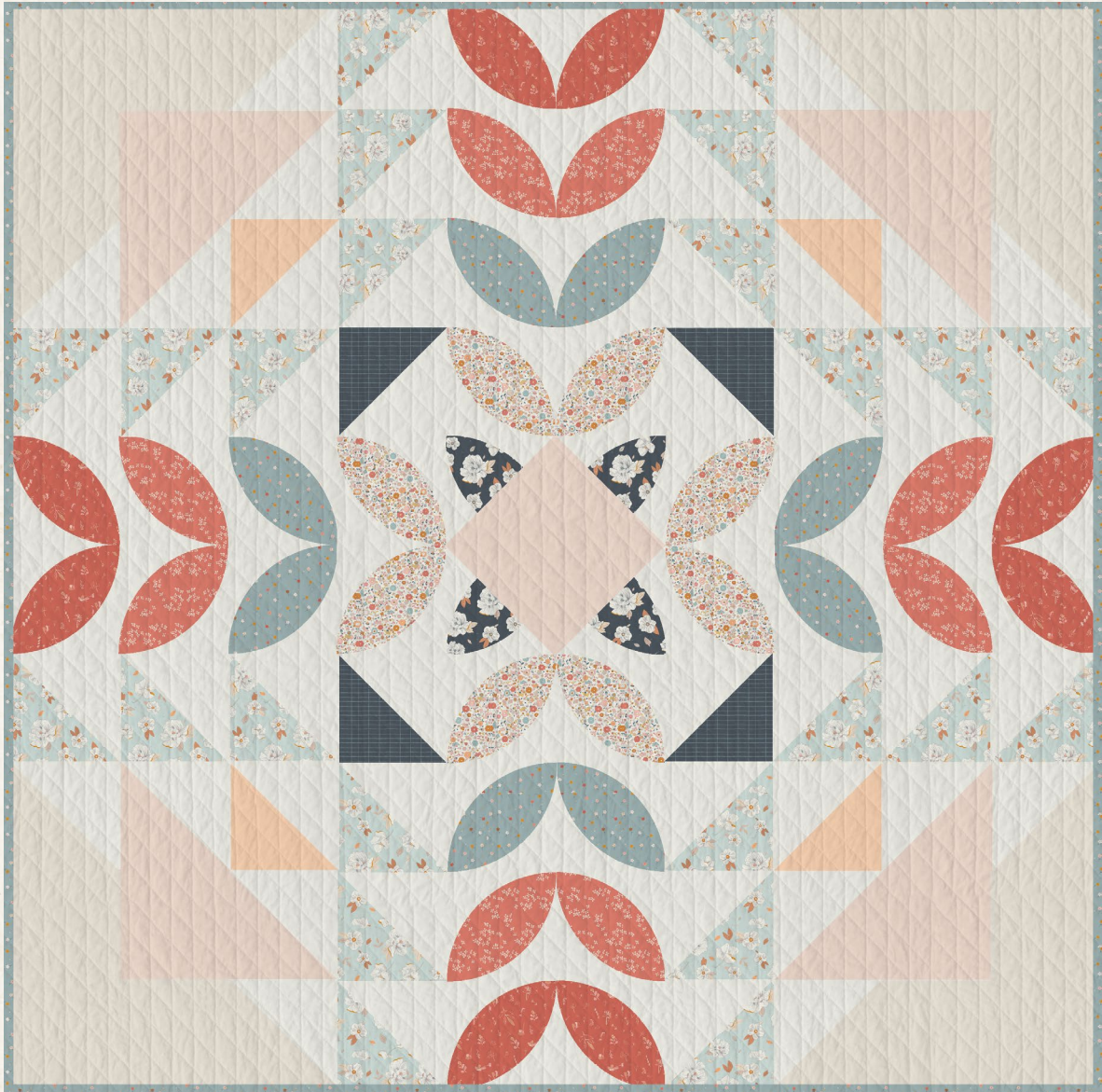


X
X
X
X
X
X
X
X
X
X
X
X
X
X
X
X
X

Unforgettable



ANGLES

A DIVISION OF AGF

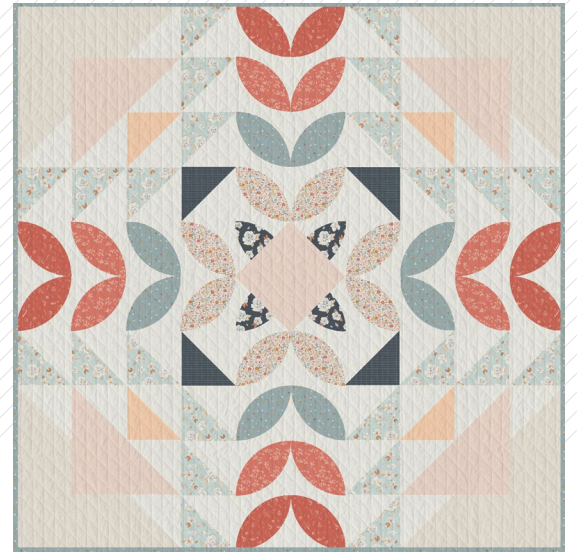
FREE PATTERN

XXXXXXXXXXXXXXXXXXXXXXXXXXXX

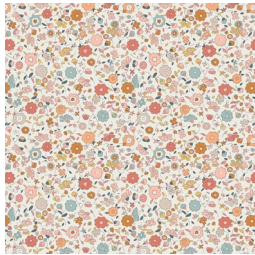
Unforgettable

QUILT DESIGNED BY AGFstudio

GAYLE
LORRAINE



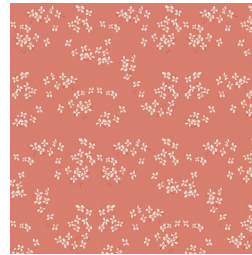
FABRICS DESIGNED BY ELIZABETH CHAPPELL



GAL34903
SMALL & SWEET



GAL34905
CALICO BLOOMS



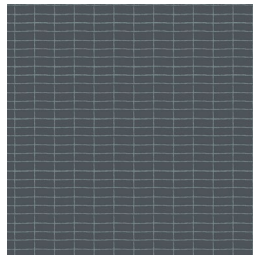
GAL34902
SWEET NOSTALGIA



GAL34911
GARDEN JOY



GAL34908
MAGNOLIA DREAMS DAY



GAL34906
LOOKING OUT



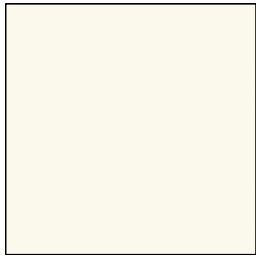
GAL34900
MAGNOLIA DREAMS NIGHT



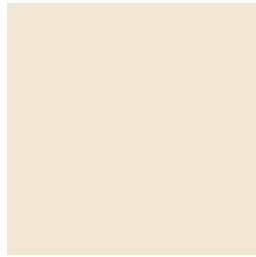
GAL34907
WILDFLOWER WHISPERS



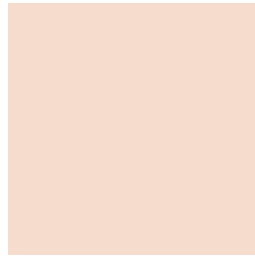
ADDITIONAL BLENDERS FOR THIS PROJECT



PE-408
WHITE LINEN



PE-436
CREME DE LA CREME



PE-471
SWEET MACADAMIA



PE-444
PEACH SHERBET

Unforgettable

FINISHED SIZE | 70" x 70"

FABRIC REQUIREMENTS

Fabric A	PE471	$\frac{5}{8}$ yd.
Fabric B	PE436	1 yd.
Fabric C	GAL34903	$\frac{3}{8}$ yd.
Fabric D	GAL34905	$\frac{3}{4}$ yd.
Fabric E	GAL34902	$\frac{3}{8}$ yd.
Fabric F	GAL34911	$\frac{3}{8}$ yd.
Fabric G	GAL34908	$\frac{3}{4}$ yd.
Fabric H	PE444	$\frac{1}{4}$ yd.
Fabric I	GAL34906	$\frac{1}{4}$ yd.
Fabric J	PE408	2 $\frac{3}{4}$ yd.
Fabric K	GAL34900	$\frac{1}{4}$ yd.

BACKING FABRIC
GAL34907 4 $\frac{1}{2}$ yds (*Suggested*)

BINDING FABRIC
Fabric **D** GAL34905 (*Included*)

CUTTING DIRECTIONS

$\frac{1}{4}$ " seam allowances are included.
WOF means width of fabric.

- Four (4) 7 $\frac{1}{2}$ " squares from fabric **A**.
- Four (4) 7 $\frac{7}{8}$ " squares from fabric **A**.
- One (1) 10 $\frac{1}{2}$ " square from fabric **A**.
- Four (4) 7 $\frac{7}{8}$ " squares from fabric **B**.
- Twelve (12) 7 $\frac{1}{2}$ " squares from fabric **B**.
- Eight (8) of petal template from fabric **C**.
- Eight (8) of petal template from fabric **D**.
- Eight (8) of petal template from fabric **E**.
- Eight (8) of petal template from fabric **F**.
- Twelve (12) 7 $\frac{7}{8}$ " squares from fabric **G**.
- Two (2) 7 $\frac{7}{8}$ " squares from fabric **H**.
- Two (2) 7 $\frac{7}{8}$ " squares from fabric **I**.
- Twenty six (26) 7 $\frac{7}{8}$ " squares from fabric **J**.
- Thirty Two (32) 7 $\frac{1}{2}$ " squares from fabric **J**.
- Two (2) of petal template from fabric **K**.

Note

Follow the diagram below for fabrics **K** cutting directions.



DIAGRAM 1

CONSTRUCTION

Sew all rights sides together with 1/4" seam allowance.

HST construction

- Place one (1) 7 7/8" squares from fabric **A** and **J** right sides together.
- Mark a diagonal line on the wrong side of one of the squares.
- Sew 1/4" on each side of the drawn line and using a rotary cutter cut through the drawn line.
- Press open and trim each HST to a 7 1/2" square.
- Repeat the same step three more times. You should have eight (8) **A-J** hst.

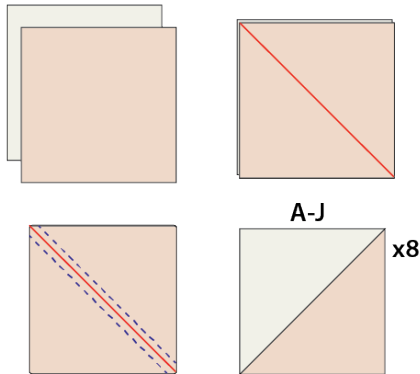


DIAGRAM 2

Repeat the HST method with the following fabrics:

- Four (4) 7 7/8" squares from fabric **B** with four (4) 7 7/8" squares from fabric **J**.
- Two (2) 7 7/8" squares from fabric **H** with two (2) 7 7/8" squares from fabric **J**.
- Two (2) 7 7/8" squares from fabric **I** with two (2) 7 7/8" squares from fabric **J**.
- Twelve (12) 7 7/8" squares from fabric **G** with twelve (12) 7 7/8" squares from fabric **J**.

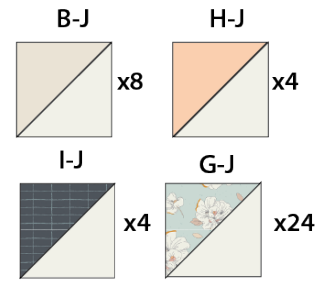


DIAGRAM 3

- Place one (1) petal template from fabric **K** on top of one (1) 7 7/8" square from fabric **J**.
- Top stitch around the petal using straight stitch or zig zag stitch.
- Cut at the piece diagonally. Repeat this step one more time with the same fabrics.
- See diagram below for reference.

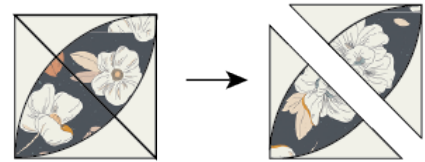
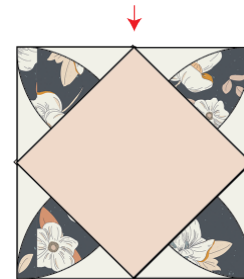
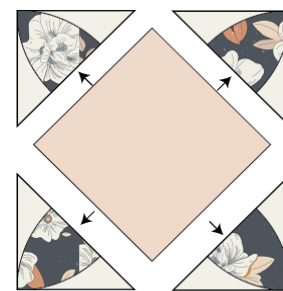


DIAGRAM 4

Center Block:

- Sew the pieces from diagram 4 on each corner of one (1) 10 1/2" square from fabric **A**.



Center Block

DIAGRAM 5

- Take eight petal template from fabrics **C, D, E, F** and (32) 7½" squares from fabric **J** and pair each petal following the diagram below. Use straight stitch or zig zag stitch to secure the petals to each fabric square.

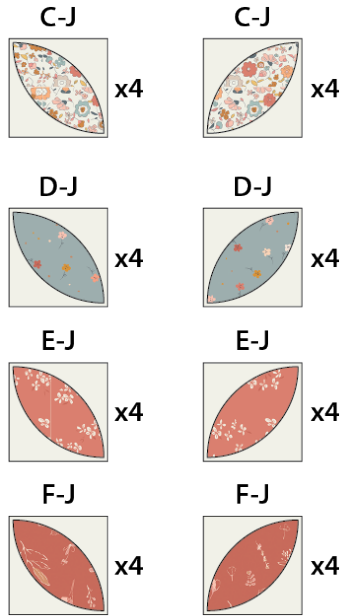


DIAGRAM 6

- Join two (2) **C-J** block, two(2) **D-J**, two (2) **E-J** and two (2) **F-J** See diagram below for reference.

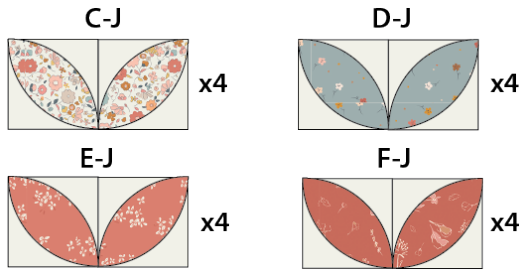


DIAGRAM 7

- See next page for the quilt top construction.

QUILT TOP

- Arrange all blocks into 9 rows, See diagram below for blocks placement and attachment and sew all rows together.

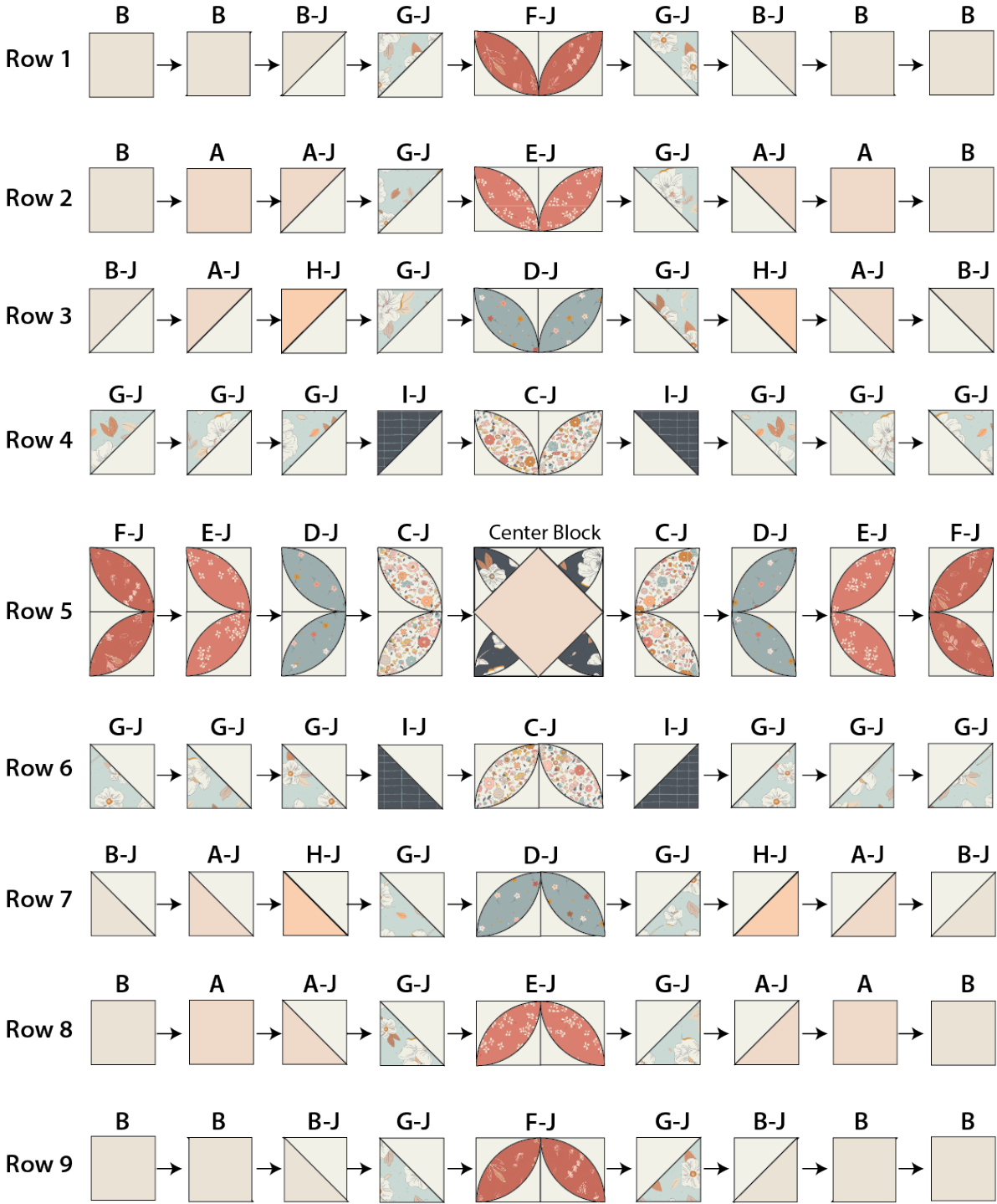


DIAGRAM 8

- Quilt as desired.

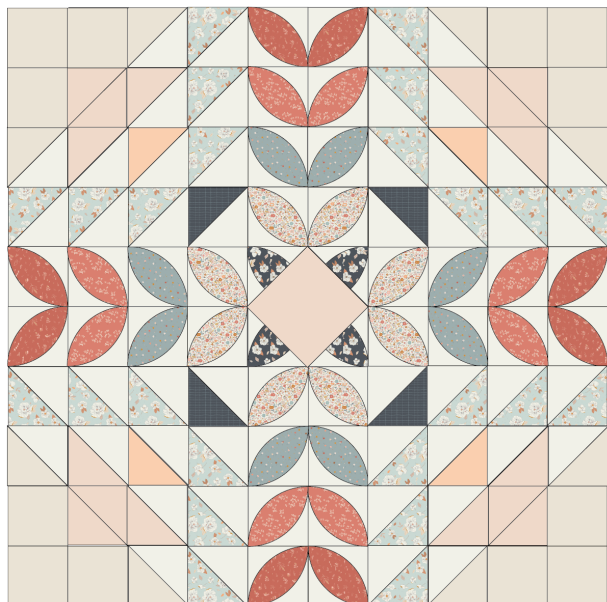


DIAGRAM 9

QUILT ASSEMBLY

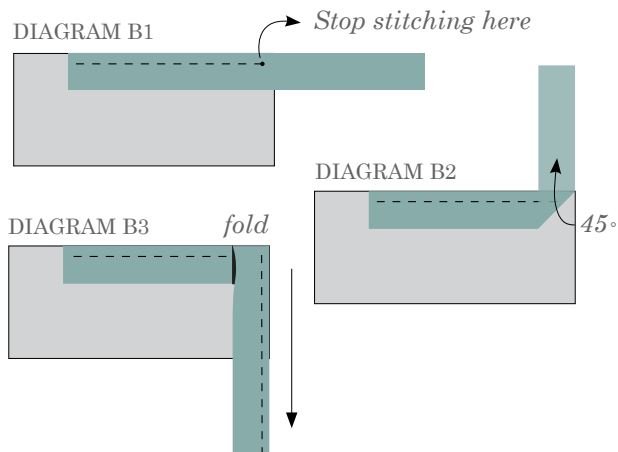
Sew rights sides together.

- Place BACKING FABRIC on a large surface wrong side up. Stretch it with masking tape against that surface.
- Place BATTING on top of backing fabric.
- Place TOP on top of the batting with right side facing up. Smooth away wrinkles using your hands.
- Pin all layers together and baste with basting thread, using long stitches. You can also use safety pins to join the layers.
- Machine or hand quilt starting at the center and working towards the corners. Remember that quilting motifs are a matter of personal preference. Have fun choosing yours!
- After you finished, trim excess of any fabric or batting, squaring the quilt to proceed to bind it.

BINDING

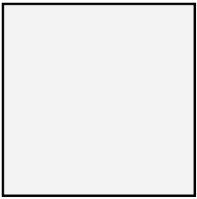
Sew rights sides together.

- Cut enough strips $1\frac{1}{2}$ " wide by the width of the fabric **D** to make a final strip 290" long. Start sewing the binding strip in the middle of one of the sides of the quilt, placing the strip right side down and leaving an approximated 5" tail. Sew with $\frac{1}{4}$ " seam allowance (using straight stitch), aligning the strip's raw edge with the quilt top's raw edge.
- Stop stitching $\frac{1}{4}$ " before the edge of the quilt (DIAGRAM B 1). Clip the threads. Remove the quilt from under the machine presser foot. Fold the strip in a motion of 45° and upward, pressing with your fingers (DIAGRAM B2). Hold this fold with your finger, bring the strip down in line with the next edge, making a horizontal fold that aligns with the top edge of the quilt (DIAGRAM B3). Start sewing at $\frac{1}{4}$ " of the border, stitching all the layers. Do the same in the four corners of the quilt.
- Stop stitching before you reach the last 5 or 6 inches. Cut the threads and remove the quilt from under the machine presser foot. Lay the loose ends of the binding flat along the quilt edge, folding the ends back on themselves where they meet. Press them together to form a crease. Using this crease as the stitching line, sew the two open ends of the binding with right sides together (you can help yourself marking with a pencil if the crease is difficult to see).
- Trim seam to $\frac{1}{4}$ " and press open. Complete the sewing. Turn binding to back of the quilt, turn raw edge inside and stitch by hand using blind stitch.

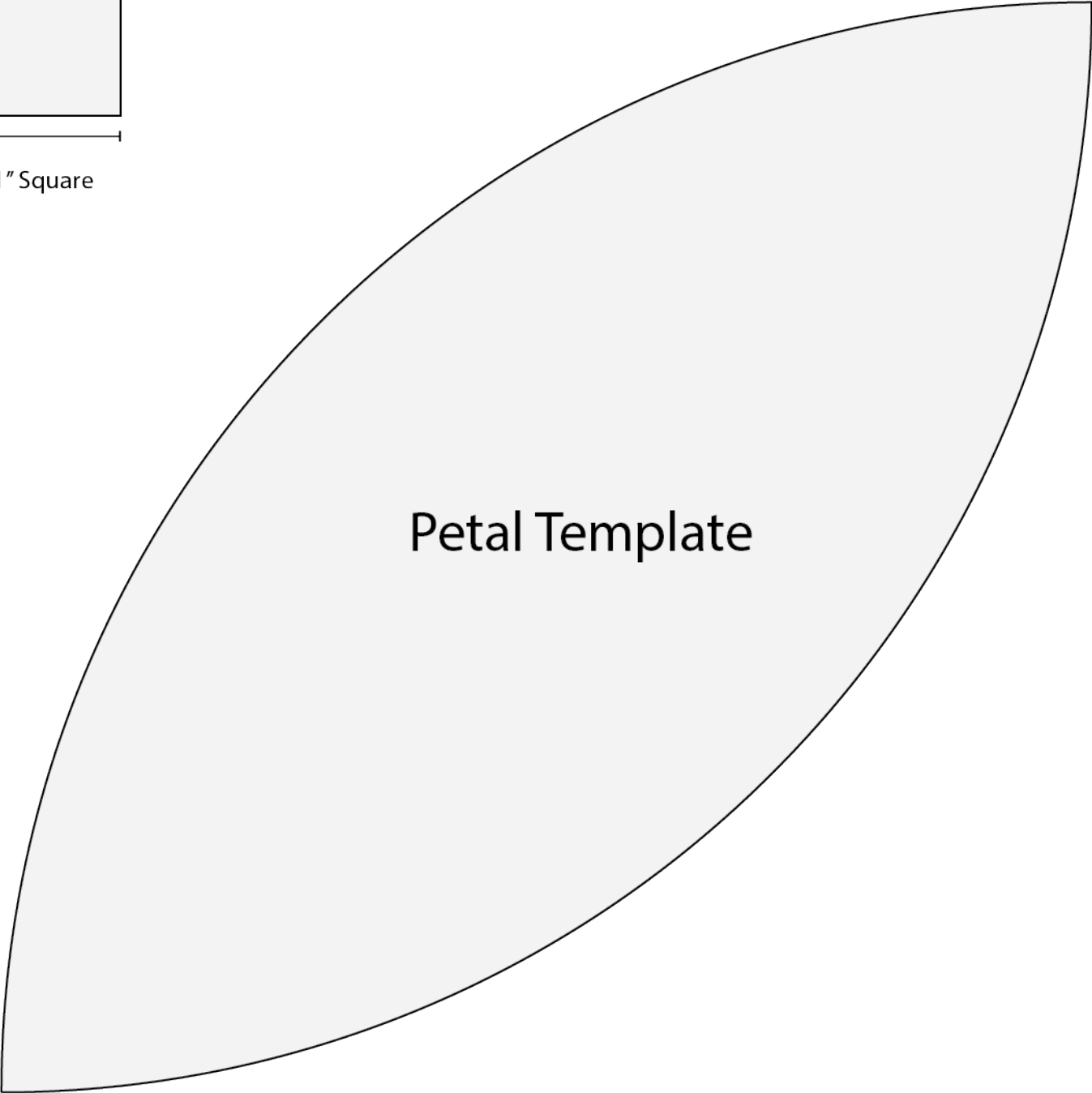


TEMPLATE

Printer Test



1" Square



Petal Template

XXXXXXXXXXXXXXXXXXXXXXXXXXXXXXXXXXXX

Congratulations
& enjoy

XXXXXXXXXXXXXXXXXXXXXXXXXXXXXXXXXXXX



artgalleryfabrics.com

NOTE: While all possible care has been taken to ensure the accuracy of this pattern, We are not responsible for printing errors or the way in which individual work varies.

Please read instructions carefully before starting the construction of this quilt. If desired, wash and iron your fabrics before starting to cut.

© 2022 Courtesy of Art Gallery Quilts LLC. All Rights Reserved.