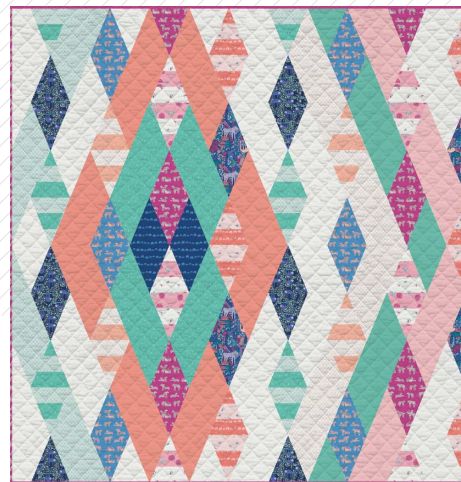


WILD GEMS

QUILT DESIGNED BY AGF STUDIO

Selva

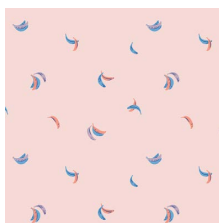


FABRICS DESIGNED BY AGF STUDIO

SAVANNAH



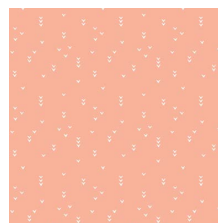
SLV-14510
JUNGLEN JOLLY



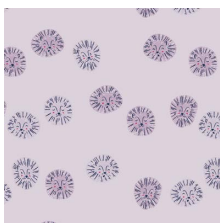
SLV-14511
BE BANANAS B1



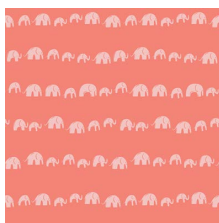
SLV-14512
FIERCE FELINES FRESH



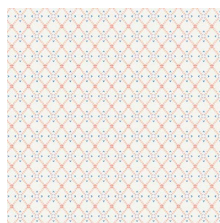
SLV-14513
PICK A PEAK PURE



SLV-14514
LUSH LIONS LILAC



SLV-14515
ELEPHANTS' ECHO EARTHY



SLV-14516
WISPY WEB WIND

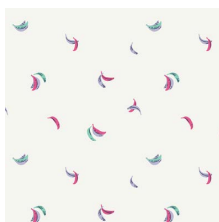


SLV-14517
SWAYING SLOTHS SKY

SIERRA



SLV-24510
JUNGLEN JOYOUS



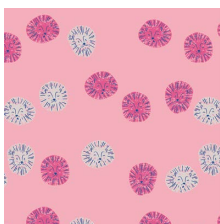
SLV-24511
BE BANANAS B2



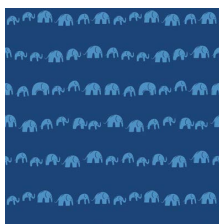
SLV-24512
FIERCE FELINES FUCSIA



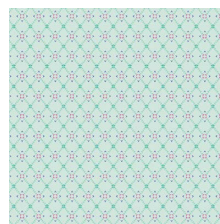
SLV-24513
PICK A PEAK PLANTA



SLV-24514
LUSH LIONS LOVE



SLV-24515
ELEPHANTS' ECHO ELECTRIC



SLV-24516
WISPY WEB WAVE



SLV-24517
SWAYING SLOTHS SERENE



WILD GEMS

FINISHED SIZE | 86" x 90"

FABRIC REQUIREMENTS

Fabric A	SLV-24516	7/8 yd.
Fabric B	SLV-24517	5/8 yd.
Fabric C	SLV-14512	5/8 yd.
Fabric D	SLV-24512	1 yd.
Fabric E	SLV-24515	1/3 yd.
Fabric F	SLV-24513	7/8 yd.
Fabric G	SLV-14516	7/8 yd.
Fabric H	SLV-14510	1/3 yd.
Fabric I	SLV-14513	1/3 yd.
Fabric J	SLV-14515	1/3 yd.
Fabric K	SLV-24514	1/3 yd.
Fabric L	SLV-24511	1/3 yd.
Fabric M	SLV-14511	1/3 yd.
Fabric N	PE-433	2 1/8 yd.
Fabric O	PE-450	1 1/8 yd.
Fabric P	PE-420	5/8 yd.
Fabric Q	PE-424	5/8 yd.

BACKING FABRIC

SLV-24510 6 yds. *(Suggested)*

BINDING FABRIC

Fabric D *(Included)*

CUTTING INSTRUCTIONS

1/4" seam allowances are included.
WOF means width of fabric.

- Three (3) WOF x 3 1/2" strips from fabrics **A, F, G, I, J, K, L, and M.**
- Two (2) WOF x 9 1/2" strips from fabrics **A, B, C, D, F, G, P, and Q.**
- One (1) WOF x 9 1/2" strips from fabrics **E and H.**
- Eight (8) WOF x 9 1/2" strips from fabric **N.**
- Four (4) WOF x 9 1/2" strips from fabric **O.**

CONSTRUCTION

Sew all rights sides together with 1/4" seam allowance.

- Take three (3) WOF x 3 1/2" strips from fabrics **A, F, G, I, J, K, L, and M.**
- Make the following Strip Sets:
- Strip Set 1: **FAF**
- Strip Set 2: **AFA**
- Strip Set 3: **IGI**
- Strip Set 4: **GIG**
- Strip Set 5: **LKL**
- Strip Set 6: **KLK**
- Strip Set 7: **JMJ**
- Strip Set 8: **MJM**
- Take two (2) WOF x 9 1/2" strips from fabrics **A, B, C, D, F, G, P, and Q,** one (1) WOF x 9 1/2" strips from fabrics **E and H,** eight (8) WOF x 9 1/2" strips from fabric **N,** and four (4) WOF x 9 1/2" strips from fabric **O.**
- Cut the template from the strips and the strip sets following Diagram 1:

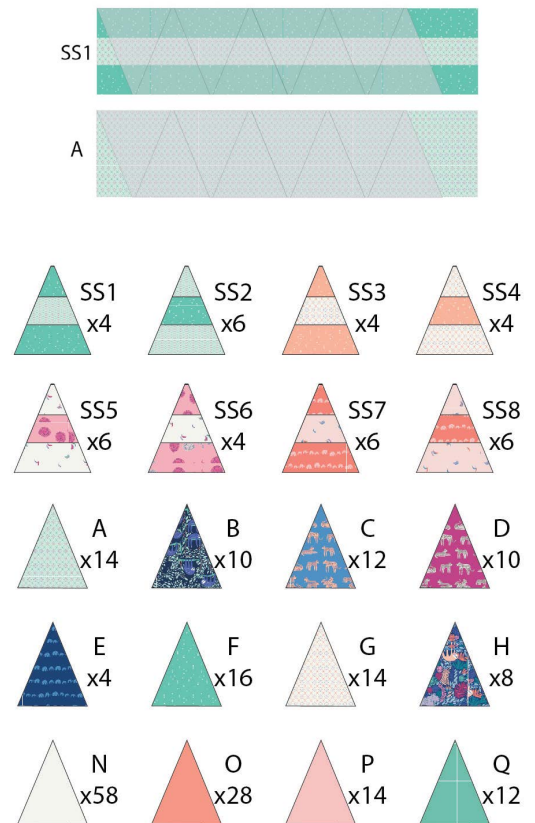


DIAGRAM 1

